

# 1145 Market Street San Francisco

Full Floor Suite 1000 Available Now  
10th Floor: 8,908 RSF

Partial Floor Suite 200 Available Now  
2nd Floor: 6,504 RSF

**John Jensen**

CA Lic. 01102014

Executive Vice President

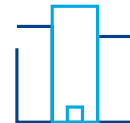
+1 415 867 1178

[john.jensen@colliers.com](mailto:john.jensen@colliers.com)

**Expansive office space with  
excellent natural light and views**



Steps away from  
Civic Center BART/  
MUNI Station



Close to new Whole  
Foods market  
and MidMarket  
development

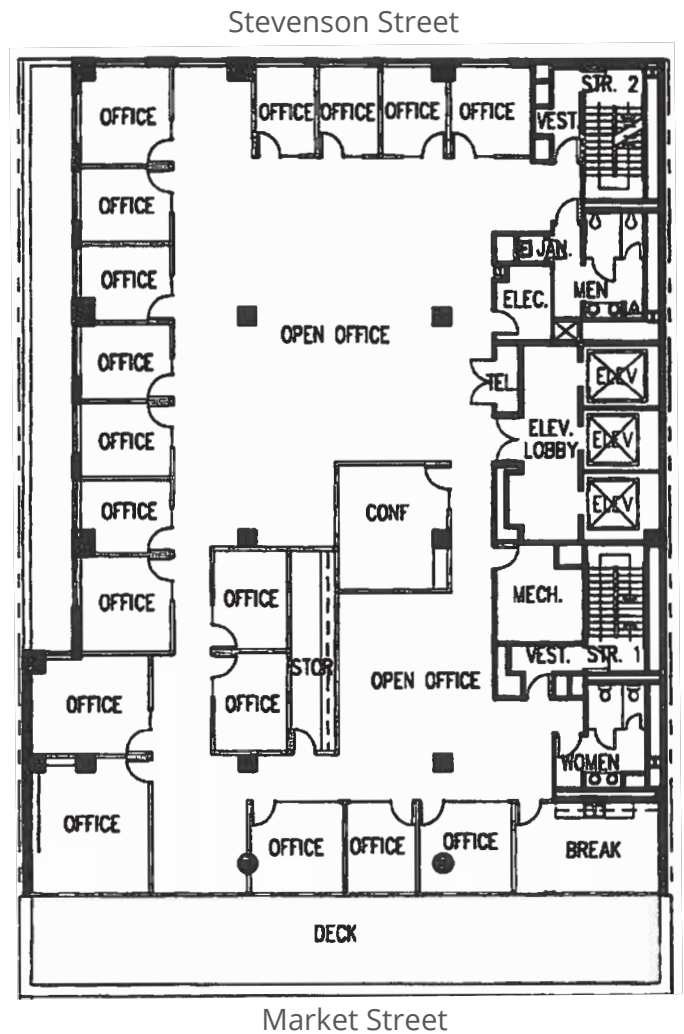


Professional  
building  
management  
24/7 security

This document has been prepared by Colliers International for advertising and general information only. Colliers International makes no guarantees, representations or warranties of any kind, expressed or implied, regarding the information including, but not limited to, warranties of content, accuracy and reliability. Any interested party should undertake their own inquiries as to the accuracy of the information. Colliers International excludes unequivocally all inferred or implied terms, conditions and warranties arising out of this document and excludes all liability for loss and damages arising there from. This publication is the copyrighted property of Colliers International and/or its licensor(s). ©2022. All rights reserved.

# 10th Floor 8,908 RSF

- Suite 1000: 8,908 RSF available now
- Full floor opportunity
- 16 window line private offices
- Panoramic views
- Private outdoor balcony
- Kitchen
- 3 conference rooms
- Open area





# 2nd Floor 6,504 RSF

- Suite 200: 6,504 RSF available now
- Beautiful views
- 4 offices/conference rooms
- 1 large conference room
- Kitchen
- Open area

