

**FOR
LEASE**

EAGLE VIEW PLAZA

3085-3143 E MAGIC VIEW DRIVE | MERIDIAN, ID

*Medical
Space
Available*



PROPERTY INFORMATION

Property Type:	Retail - Office
Land Size:	2.63 Acres
Parking:	6:1,000
Zoning:	C-G
NNN's:	\$6.41 PSF

SPACE AVAILABLE

Suite	Sizes	Rate
130	1,250 SF - 2,500 SF	\$18.50 PSF NNN
140	5,969 SF *	\$25.00 PSF NNN

HIGHLIGHTS

- » Directly on Eagle Road near I-84, 64,384 vpd
- » Perfect for retail, restaurant, or medical
- » Prominent pylon and monument signage available
- » Directly across from St. Luke's Meridian Hospital
- » Six hotels in 2 mile radius (600 rooms averaging 80% occupancy)
- » *Suite 140 currently a surgery center
- » Suite 130 could be converted to medical
- » Contact agent for details

Colliers
INTERNATIONAL

MIKE CHRISTENSEN
208 472 2866
mike.christensen@colliers.com

SCOTT FEIGNER
208 493 5107
scott.feighner@colliers.com

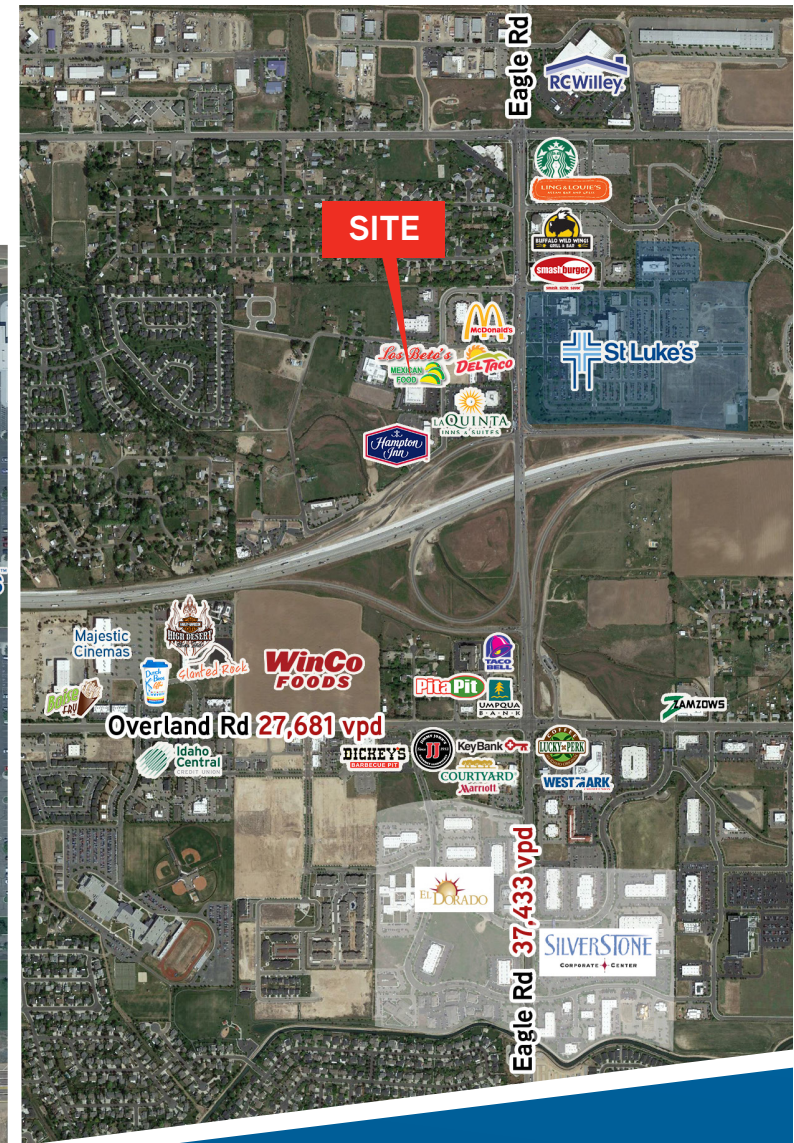
Colliers International Idaho | 755 West Front Street, Suite 300 Boise, Idaho 83702 | www.colliers.com/boise | 208 345 9000

This document has been prepared by Colliers International for advertising and general information only. Colliers International makes no guarantees, representations or warranties of any kind, expressed or implied, regarding the information including, but not limited to, warranties of content, accuracy and reliability. Any interested party should undertake their own inquiries as to the accuracy of the information. Colliers International excludes unequivocally all inferred or implied terms, conditions and warranties arising out of this document and excludes all liability for loss and damages arising there from. This publication is the copyrighted property of Colliers International and/or its licensor(s). ©2016. All rights reserved

**FOR
LEASE**

EAGLE VIEW PLAZA

E MAGIC VIEW DR | MERIDIAN, ID



Colliers
INTERNATIONAL

MIKE CHRISTENSEN
208 472 2866
mike.christensen@colliers.com

SCOTT FEIGHNER
208 493 5107
scott.feighner@colliers.com