

The Iconic Judge Building

8 E. Broadway | Salt Lake City, UT 84111

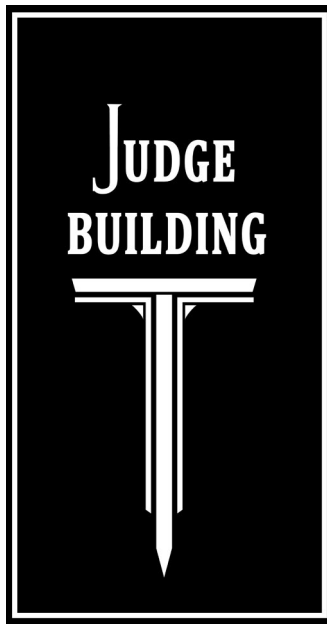


Colliers
111 S. Main St. | Suite 2200
Salt Lake City, UT 84111
Main: +1 801 947 8300
colliers.com

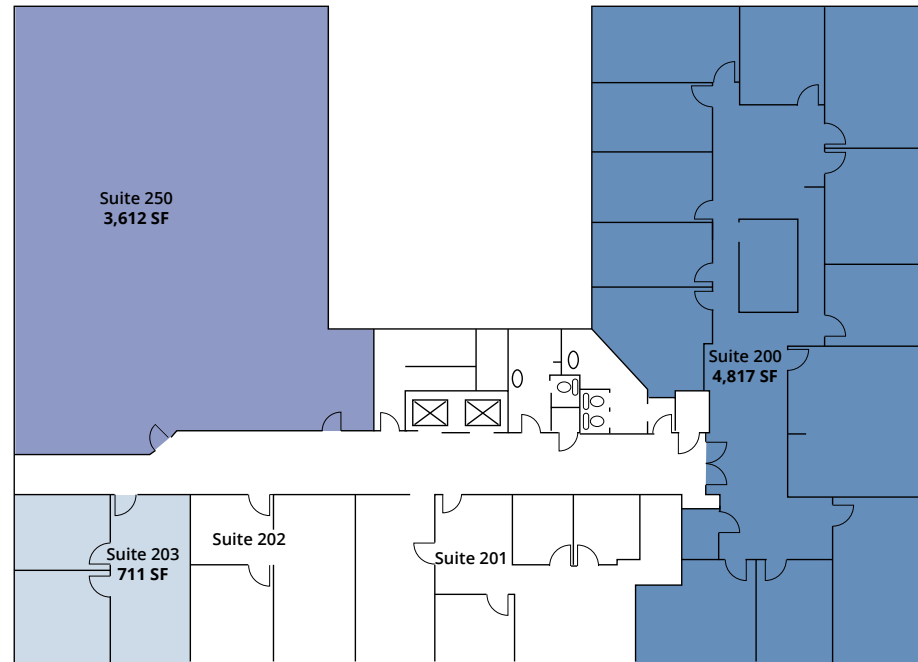
Presented By:
Derek Sawaya
Associate Vice President
+1 801 947 8341
derek.sawaya@colliers.com

Property Highlights

- 400 SF to 5,794 SF Suites available
- \$24.50 PSF FS *subject to terms of final lease agreement*
- 200 feet from Trax lighttrail
- Quick access to parking and numerous amenities
- Located in the heart of Downtown SLC



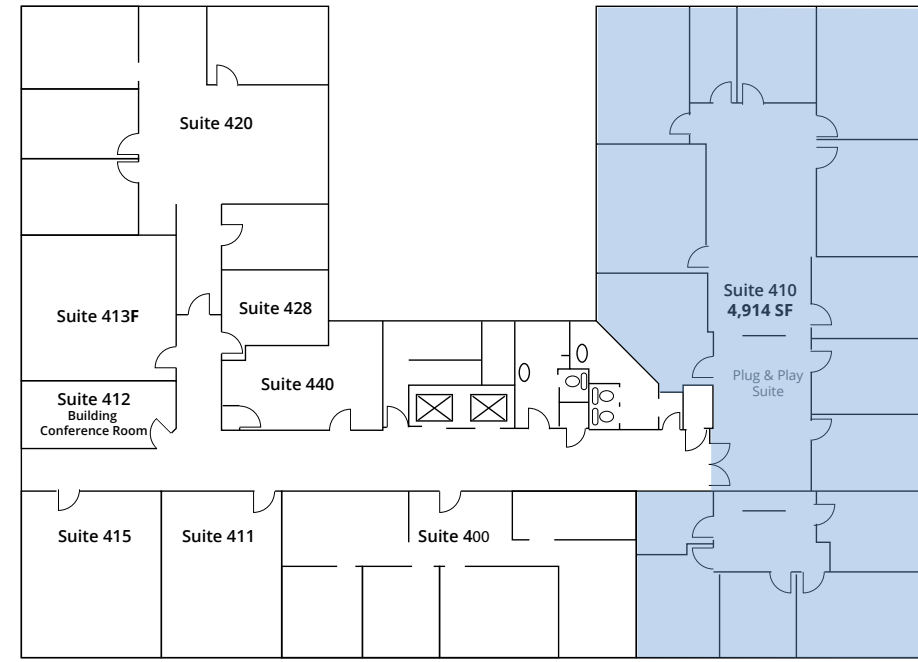
Level 2



Main Street

Broadway

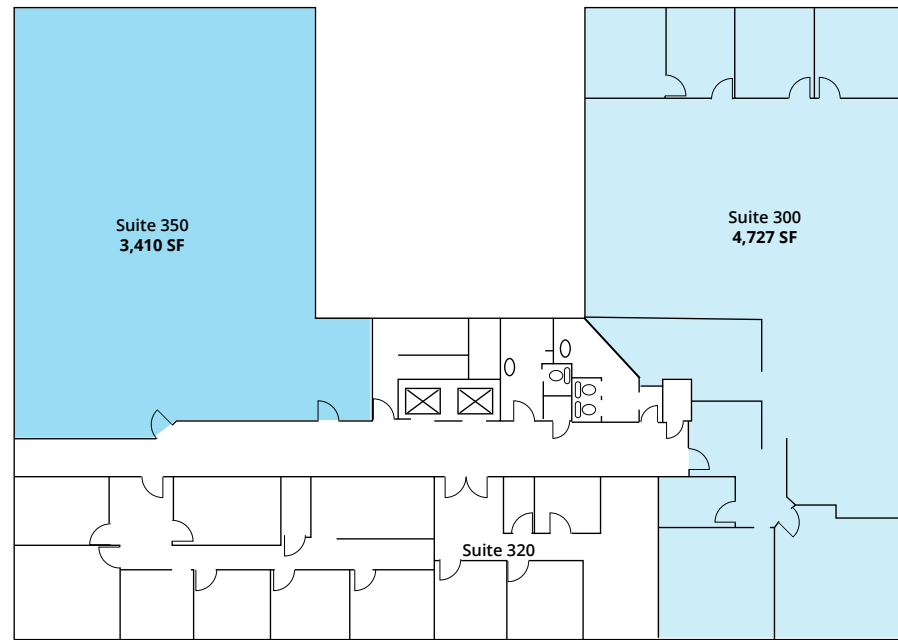
Level 4



Main Street

Broadway

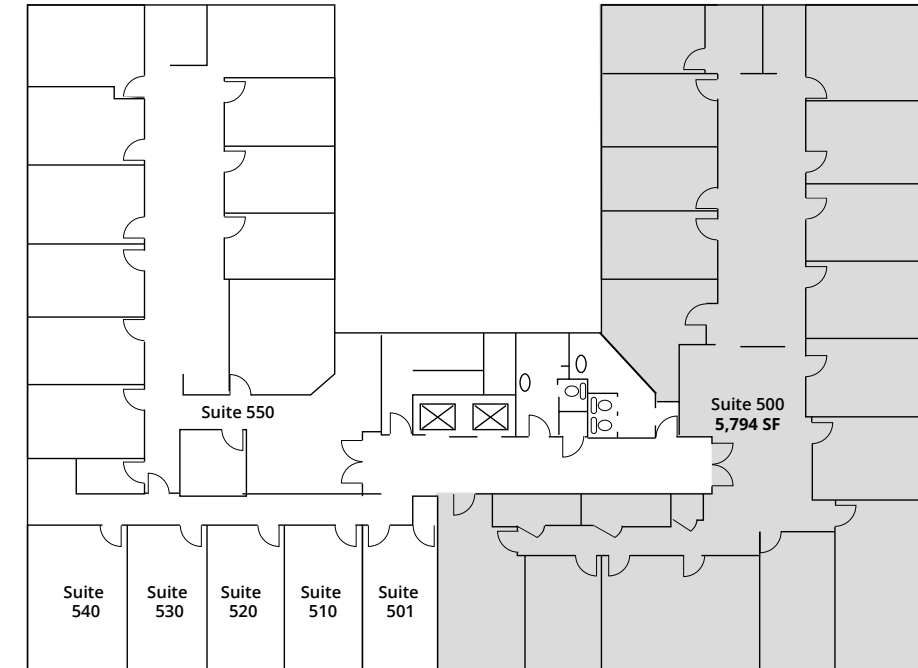
Level 3



Main Street

Broadway

Level 5

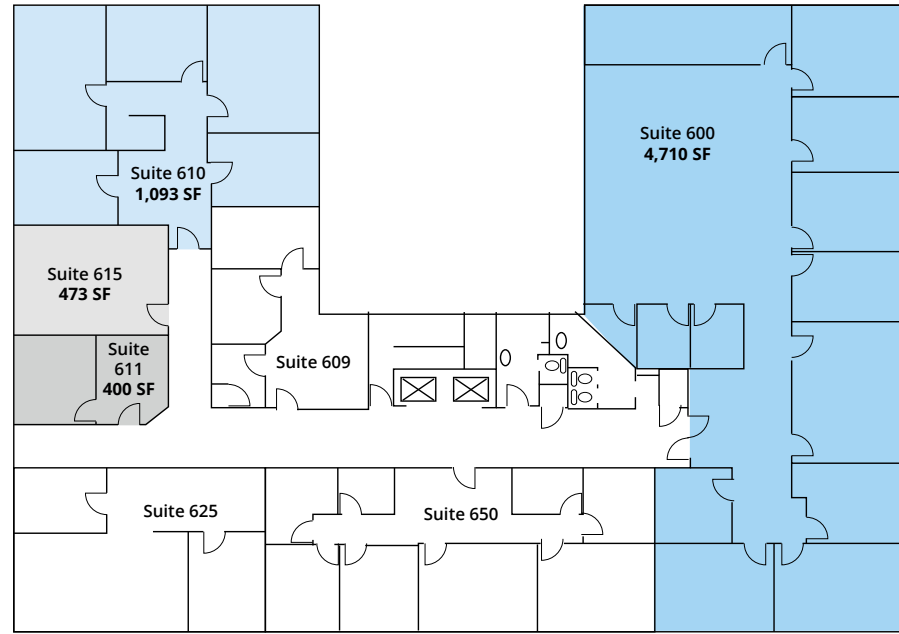


Main Street

Broadway



Level 6

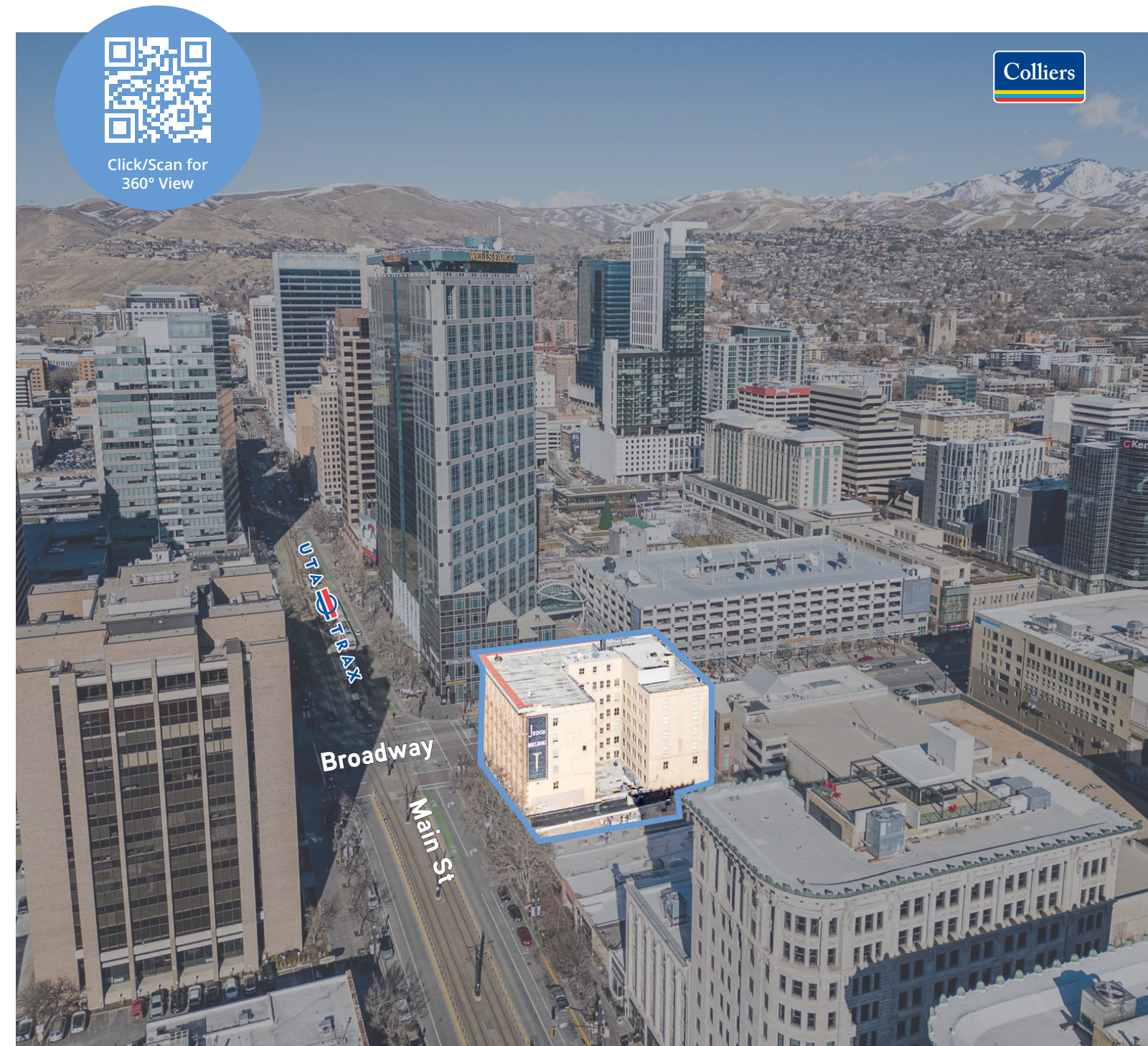


Main Street

Broadway

Available Suites

600	610	611	615
4,710 SF	1,093 SF	400 SF	417 SF



Select Retail Amenities



Derek Sawaya
 Associate Vice President
 +1 801 947 8341
 derek.sawaya@colliers.com

Colliers
 111 S. Main St. | Suite 2200
 Salt Lake City, UT 84111
 Main: +1 801 947 8300
 colliers.com

