

FOR LEASE > 7,500 SF AVAILABLE



# APPLING FARMS CORPORATE PARK

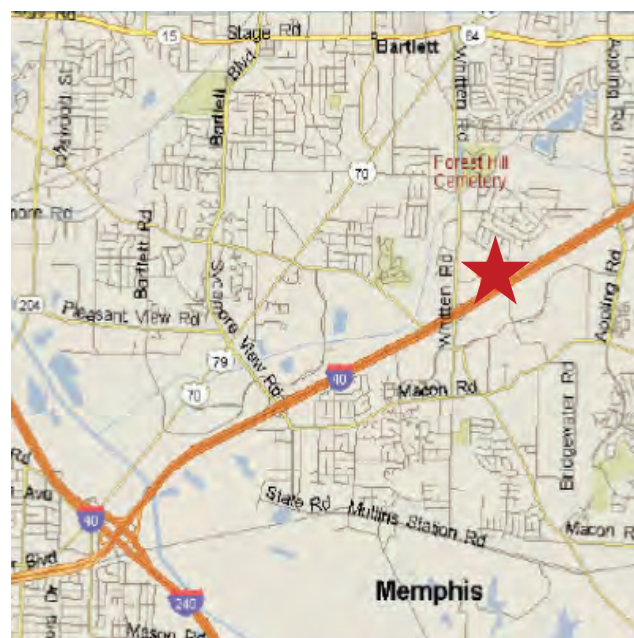
6949 APPLING FARMS PARKWAY, SUITE 108, MEMPHIS, TN 38133



## Building Amenities

### Suite 108:

- > 7,500 SF available
- > 50% office area
- > Two (8' x 10') dock-high doors
- > One (10' x 10') drive-in door
- > Class IV sprinkler
- > 18' clear ceiling height
- > Lights and heat already in place
- > Visible from I-40 (over 110,000 cars/day)
- > Located directly off Whitten Road just north of the I-40 exit (Whitten Road - 30,000 cars/day)



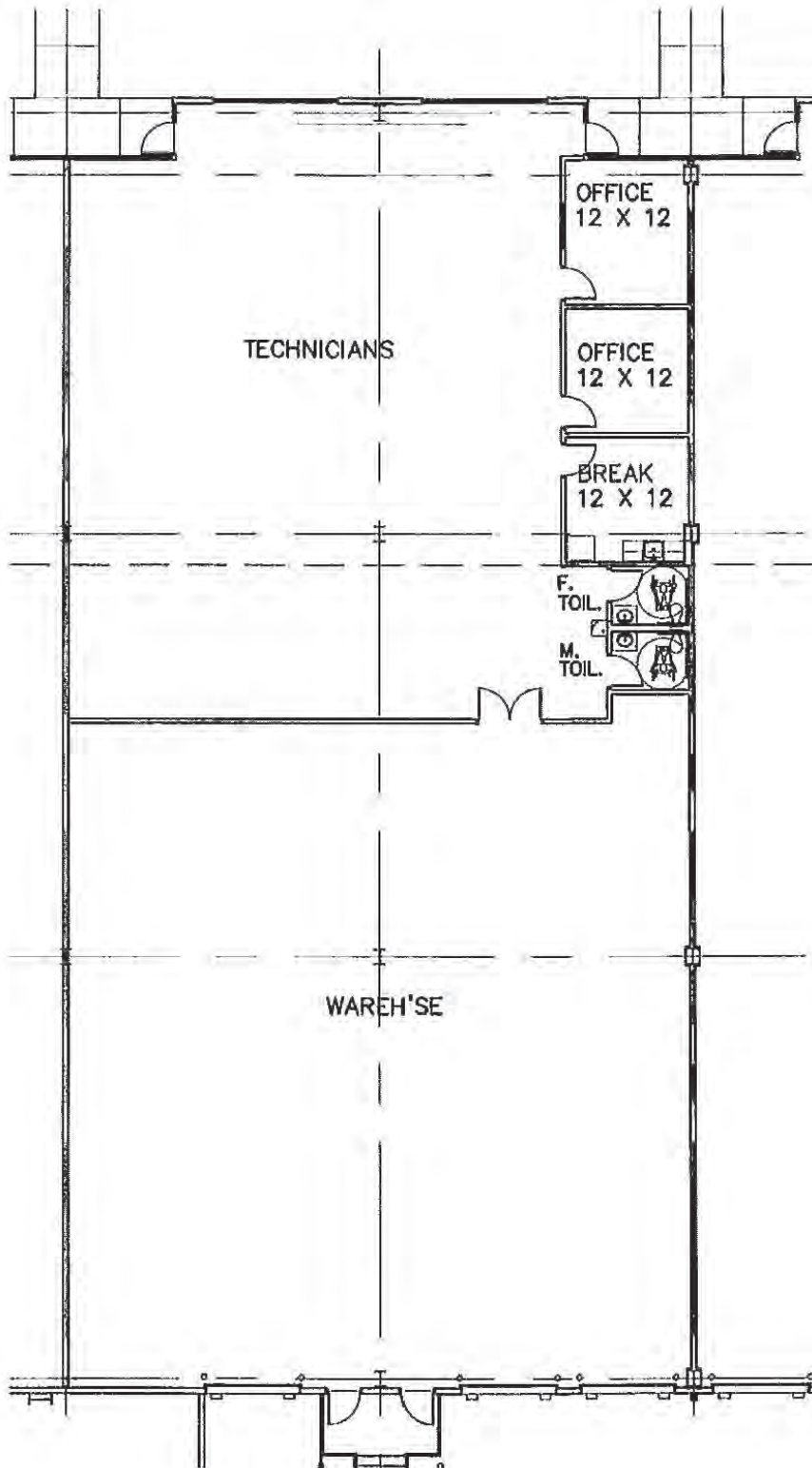
*Located in the Northeast Industrial submarket  
just off the I-40 & Whitten Road exit.*

AGENT: J HICKMAN  
+1 901 312 5773  
MEMPHIS, TN  
j.hickman@colliers.com

AGENT: BRAD KORNEGAY  
+1 901 312 5751  
MEMPHIS, TN  
brad.kornegay@colliers.com

COLLIERS INTERNATIONAL  
6363 Poplar Avenue, Suite 400  
Memphis, TN 38119  
www.colliers.com

Appling Farms Corporate Park >  
6949 Appling Farms Pkwy., Ste 108  
7,500 SF Available



## Contact Us

AGENT: J HICKMAN

+1 901 312 5773

MEMPHIS, TN

[j.hickman@colliers.com](mailto:j.hickman@colliers.com)

AGENT: BRAD KORNEGAY

+1 901 312 5751

MEMPHIS, TN

[brad.kornegay@colliers.com](mailto:brad.kornegay@colliers.com)

COLLIERS INTERNATIONAL  
6363 Poplar Avenue, Suite 400  
Memphis, TN 38119  
+1 901 375 4800

[www.colliers.com](http://www.colliers.com)

This document has been prepared by Colliers International for advertising and general information only. Colliers International makes no guarantees, representations or warranties of any kind, expressed or implied, regarding the information including, but not limited to, warranties of content, accuracy and reliability. Any interested party should undertake their own inquiries as to the accuracy of the information. Colliers International excludes unequivocally all inferred or implied terms, conditions and warranties arising out of this document and excludes all liability for loss and damages arising there from. This publication is the copyrighted property of Colliers International and/or its licensor(s). ©2016 All rights reserved.

