



435

TASSO STREET

PALO ALTO, CA

435

TASSO STREET



Downtown Palo Alto's premier boutique office building.



- 3-Story, Class A ±32,000 square foot downtown Palo Alto office building
- Exclusive outdoor patios on 1st and 3rd floors
- Flexible floor plates allow for creative and traditional build out
- Newly renovated restrooms on all floors
- Dedicated property management and security
- Bike storage and showers
- Secured underground parking
- Steps from restaurants, shopping and entertainment

435

TASSO STREET



ACCESS

Centrally located in downtown, 435 Tasso offers immediate access to CalTrain, Highway 101 and over 100 dining, entertainment and retail options.



435

TASSO STREET

SAN FRANCISCO INTERNATIONAL AIRPORT

84

101

SAN JOSE INTERNATIONAL AIRPORT

| | |
|-----------------------|-----------|
| Caltrain Station | .6 miles |
| HWY 101 | 1.6 miles |
| Interstate 280 | 6 miles |
| San Francisco Airport | 18 miles |
| San Jose Airport | 15 miles |
| Palo Alto Airport | 3.7 miles |

435

TASSO STREET

82

Caltrain

Stanford Shopping Center



- Caltrain Line
- SamTrans Bus Route
- VTA Bus Route
- Dumbarton Express Bus Route

280



435

TASSO STREET

AMENITIES

| RESTAURANTS | | | | | |
|-------------|--------------------|----------------|----|-------------------|----------------|
| 1 | Evvia | 420 Emerson St | 20 | Joe and the Juice | 500 University |
| 2 | Blue Bottle Coffee | 456 Univeristy | 21 | Cafe Venitia | 419 University |
| 3 | Joya | 339 University | 22 | Il Fornaio | 520 Cowper |
| 4 | Dan Gordons | 640 Emerson | 23 | Philz Coffee | 101 Forest |
| 5 | Peets Coffee | 436 University | 24 | Coupa Cafe | 538 Ramona |
| 6 | Rangoon Ruby | 445 Emerson | 25 | Rose and Crown | 547 Emerson |
| 7 | Reposado | 236 Hamilton | 26 | Gravity Bistro | 544 Emerson |
| 8 | Starbucks | 376 University | 27 | Wahlburgers | 185 University |
| 9 | Umami Bruger | 452 University | 28 | Pizza My Heart | 220 University |
| 10 | Zola | 565 Bryant St | 29 | Crepevine | 367 University |
| 11 | Arte Ristorante | 473 University | 30 | Arte | 473 University |
| 12 | Bird Dog | 420 Ramona St | 31 | Tamarine | 566 University |
| 13 | Kanpai | 330 Lytton | 32 | Yayo! | 403 University |
| 14 | Cafe Epi | 405 University | 33 | Nola | 535 Ramona |
| 15 | Local Union 271 | 271 University | 34 | Sancho's | 491 Lytton |
| 16 | Oren's Hummus | 261 University | 35 | Bangkok Cuisine | 407 Lytton |
| 17 | Pluto's | 482 University | 36 | Sushimoto | 448 University |
| 18 | Shushiritto | 448 University | 37 | MacArthur Park | 27 University |
| 19 | Tai Pan | 560 Waverly | 38 | Gyro Gyro | 498 University |

| OTHER AMENITIES | | |
|-----------------|------------------------|----------------|
| 1 | Apple Store | 340 University |
| 2 | Whole Foods Market | 774 Emerson |
| 3 | UPS Store | 555 Bryant |
| 4 | LuluLemon Athleta | 432 University |
| 5 | Town & Country Village | 855 El Camino |
| 6 | Trader Joes | 855 El Camino |
| 7 | HanaHaus | 456 Univeristy |

| HOTELS | | |
|--------|--------------------|--------------------|
| 1 | Epiphany Hotel | 180 Hamilton Ave |
| 2 | Four Seasons | 2050 University |
| 3 | The Clement Hotel | 711 El Camino Real |
| 4 | Garden Court Hotel | 520 Cowper St |
| 5 | Sheraton | 625 El Camino Real |
| 6 | Westin Hotel | 675 El Camino Real |

| FITNESS CENTERS | | |
|-----------------|---------------|--------------|
| 1 | Form Fitness | 445 Bryant |
| 2 | Reach Fitness | 707 High |
| 3 | Vivre | 611 Emerson |
| 4 | Yoga Source | 158 Hamilton |

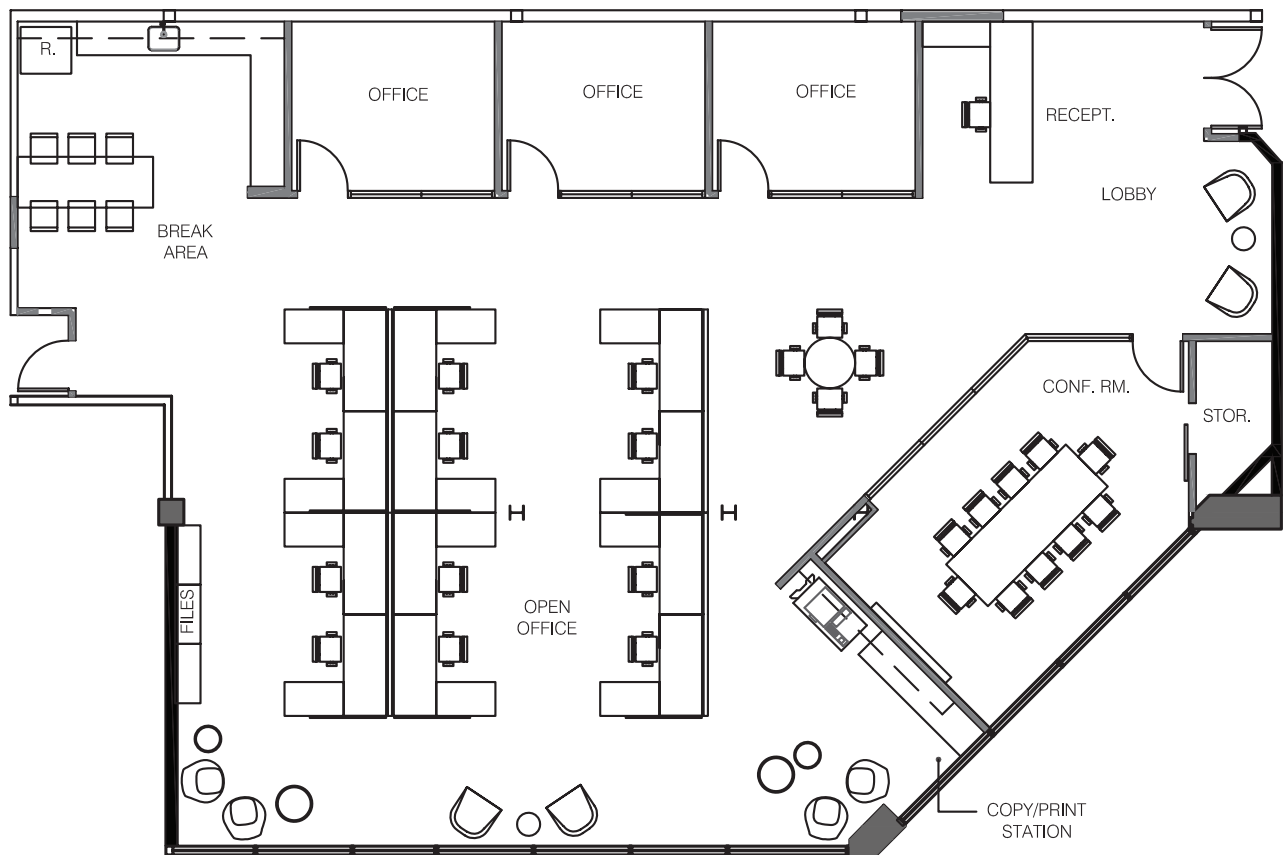


7 Minutes to HWY 101



Suite 200 Floor Plan

- ±3,591 Rentable Square Feet
- Spec suite with high end finishes
- 3 offices, conference room, open break area, 12 workstations
- Renovations underway



Hypothetical Floor Plan

435

TASSO STREET

PALO ALTO, CA

CONTACT EXCLUSIVE AGENTS:

MIKE COBB

+1 650 486 2251

mike.cobb@colliers.com

CA License No. 00979399

DOUG MARKS

+1 650 486 2222

doug.marks@colliers.com

CA License No. 01094755

SUSAN GREGORY

+1 408 282 3940

susan.gregory@colliers.com

CA License No. 01217517

MARNE MICHAELS

+1 408 282 3838

marne.michaels@colliers.com

CA License No. 00789385



Drawings Not Exact, Not to Scale. The information furnished has been obtained from sources we deem reliable and is submitted subject to errors, omissions and changes. Although Colliers International has no reason to doubt its accuracy, we do not guarantee it. All information should be verified by the recipient prior to lease, purchase, exchange, or execution of legal documents. © 2018 Colliers International