

FOR SALE

±12,566 Square Foot Industrial Building

118 West Julie Drive // Tempe // AZ



- > ±12,566 SF industrial building
- > Lot size: ±30,788 square feet
- > ±4,652 square feet of office
- > ±1,307 square feet of mezzanine
- > Power: 800 amps/120-208v, 3p
- > 19.6' clear height
- > 100% A/C
- > Zoning: LI, City of Tempe
- > 2 grade level doors (12' x 12')
- > Fire sprinklered; high bay lighting
- > Potential for fenced yard

SALE PRICE:

\$1,250,000 // \$99.47 PSF

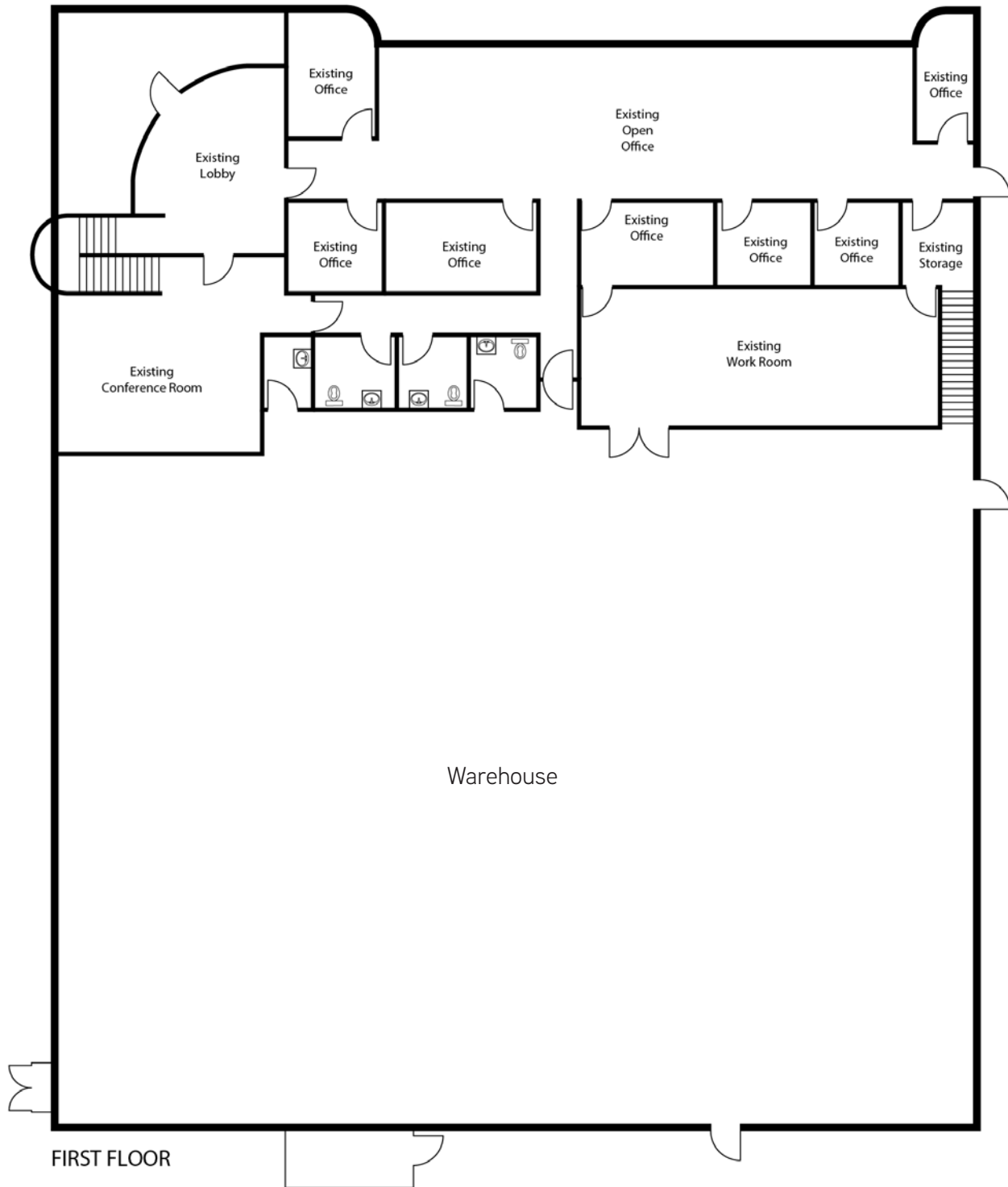
FOR
INFORMATION
CONTACT:

Rob Martensen, SIOR, CCIM
EXECUTIVE VICE PRESIDENT
DIR +1 602 222 5082
rob.martensen@colliers.com

Colliers International
2390 E. Camelback Rd. Ste 100
Phoenix, Arizona 85016
www.colliers.com/greaterphoenix



1st Floor Plan



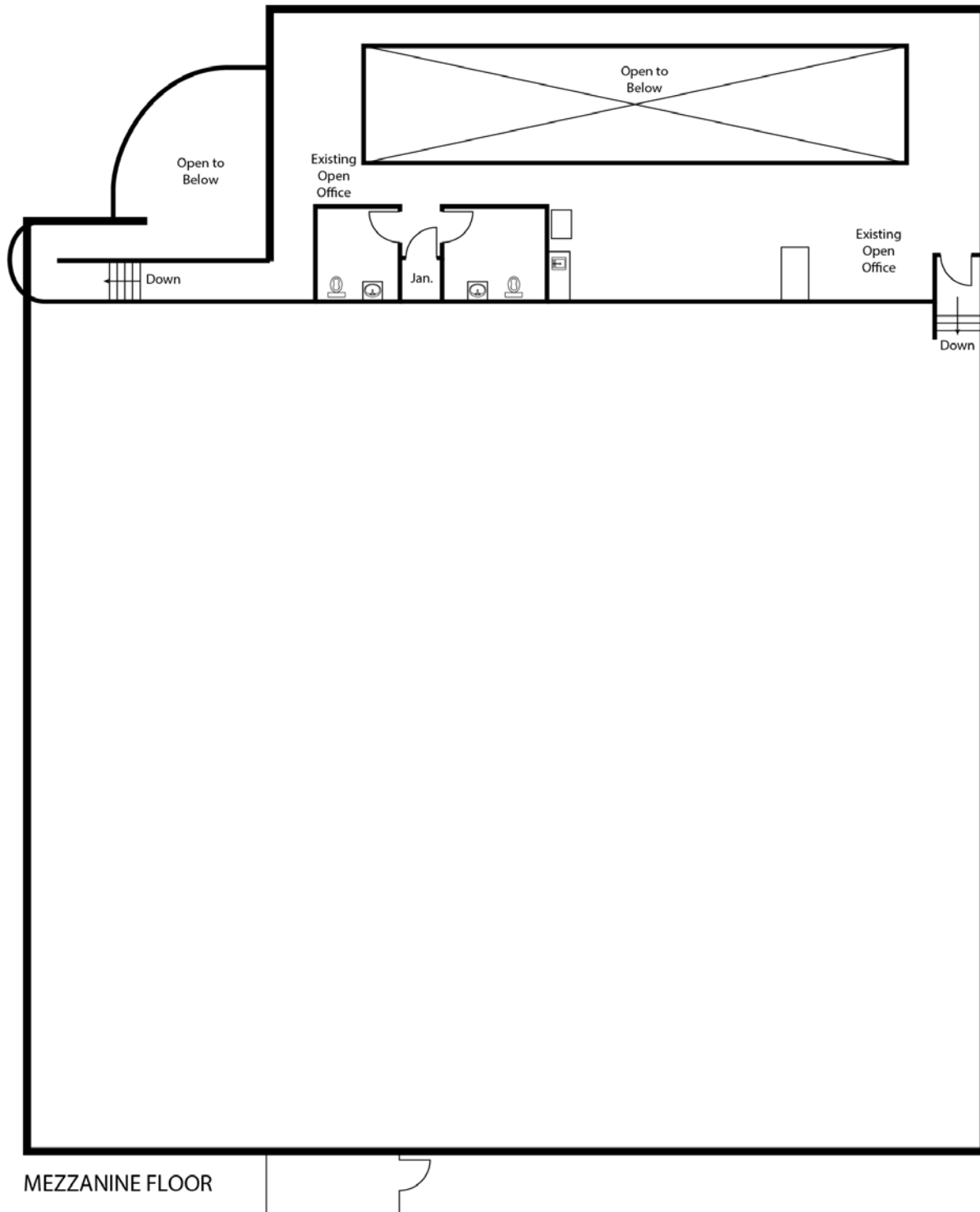
FOR
INFORMATION
CONTACT:

Rob Martensen, SIOR, CCIM
EXECUTIVE VICE PRESIDENT
DIR +1 602 222 5082
rob.martensen@colliers.com

Colliers International
2390 E. Camelback Rd. Ste 100
Phoenix, Arizona 85016
www.colliers.com/greaterphoenix



Mezzanine Level Floor Plan



FOR
INFORMATION
CONTACT:

Rob Martensen, SIOR, CCIM
EXECUTIVE VICE PRESIDENT
DIR +1 602 222 5082
rob.martensen@colliers.com

Colliers International
2390 E. Camelback Rd. Ste 100
Phoenix, Arizona 85016
www.colliers.com/greaterphoenix



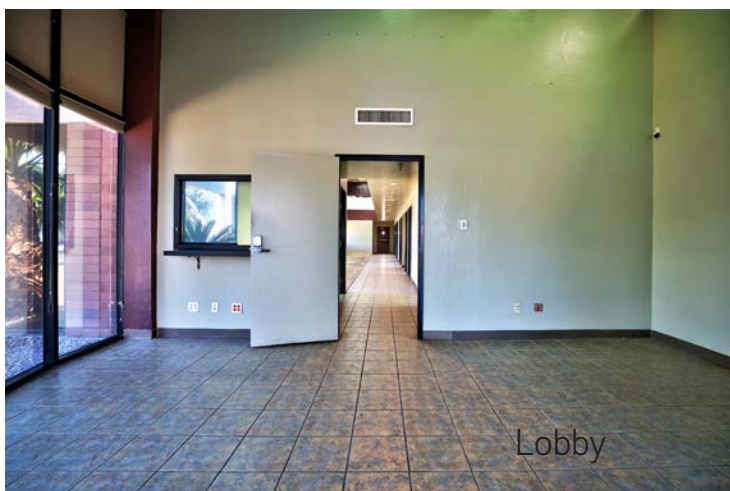
118 W Julie Drive, Tempe



Warehouse



Warehouse



Lobby



Office Space/Corridor



Kitchen/Open Area



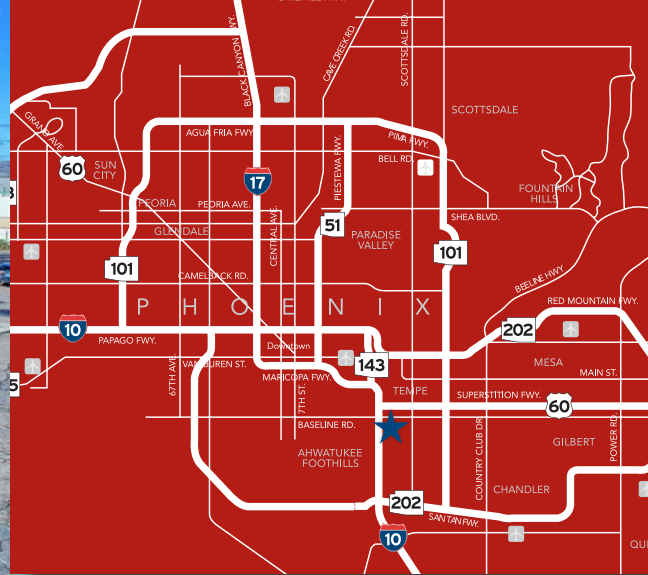
Warehouse

FOR
INFORMATION
CONTACT:

Rob Martensen, SIOR, CCIM
EXECUTIVE VICE PRESIDENT
DIR +1 602 222 5082
rob.martensen@colliers.com

Colliers International
2390 E. Camelback Rd. Ste 100
Phoenix, Arizona 85016
www.colliers.com/greaterphoenix





Contact:

Rob Martensen, SIOR, CCIM
Executive Vice President
602 222 5082
rob.martensen@colliers.com

Colliers International
2390 E. Camelback Rd. Ste 100
Phoenix, Arizona 85016
www.colliers.com/greaterphoenix

