



Lease Price:

\$800/month

FOR LEASE

7330 E Michigan Ave Saline, MI

Office Space Available

Property Highlights

- ± 575 SF
- \$800/mo, Plus \$100 for Property Taxes and ¼ of the Utilities
- Great Location for General Office or Wellness Use
- Ground Level Entry and Shared Bathrooms
- Plenty of Parking and Signage Available
- Near Downtown Saline and Close to US-23
- Located in a High-Traffic Area with Approximately 30,000 Cars Passing Daily
- Surrounded by Established Restaurants, Retail, Businesses, and Neighborhoods.

CONTACT US

Colliers Ann Arbor
734 994 3100
annarbor@colliers.com

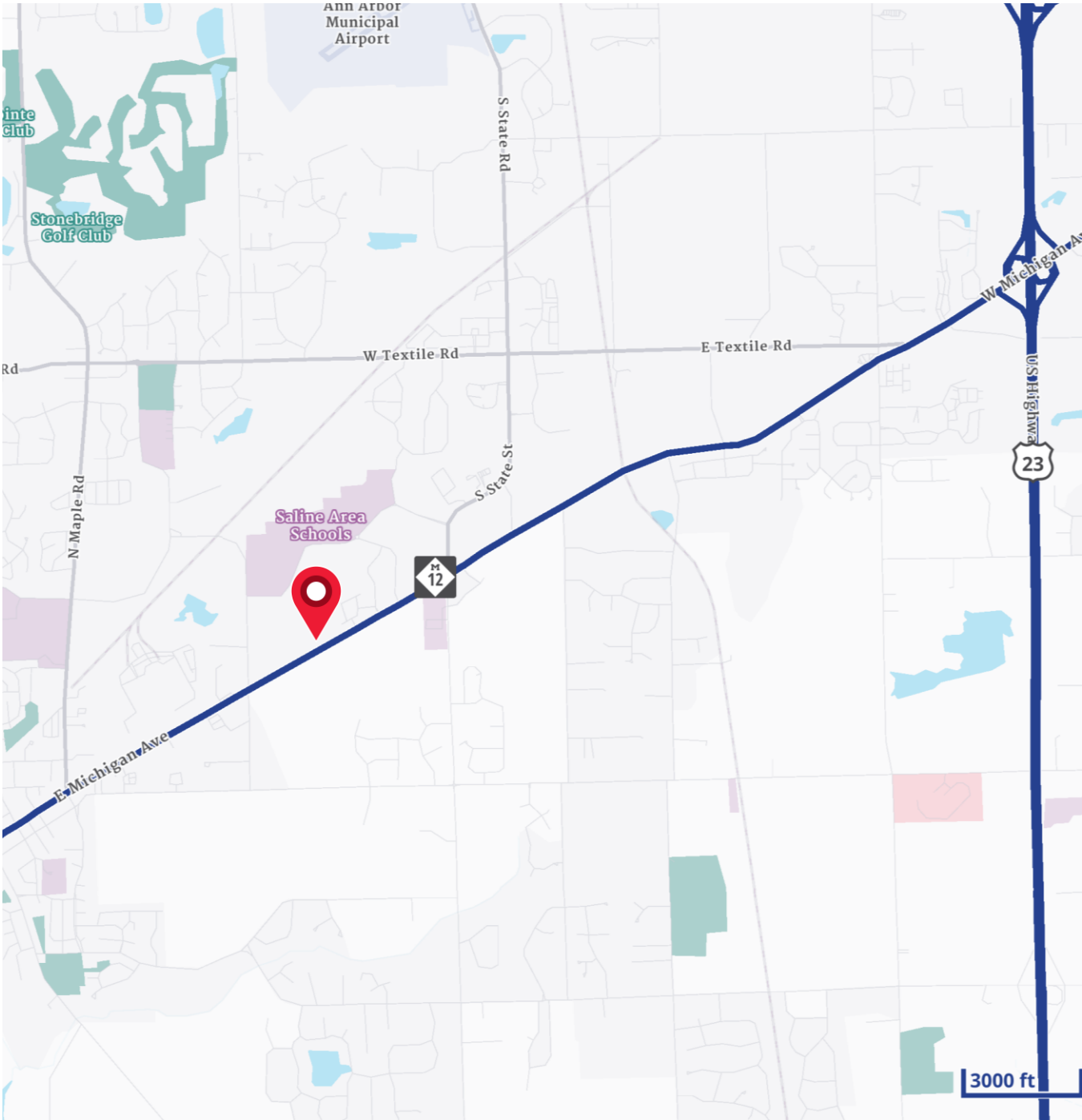
1955 Pauline Blvd., Suite 400
Ann Arbor, MI 48103
colliersannarbor.com



Exterior or Interior Photos



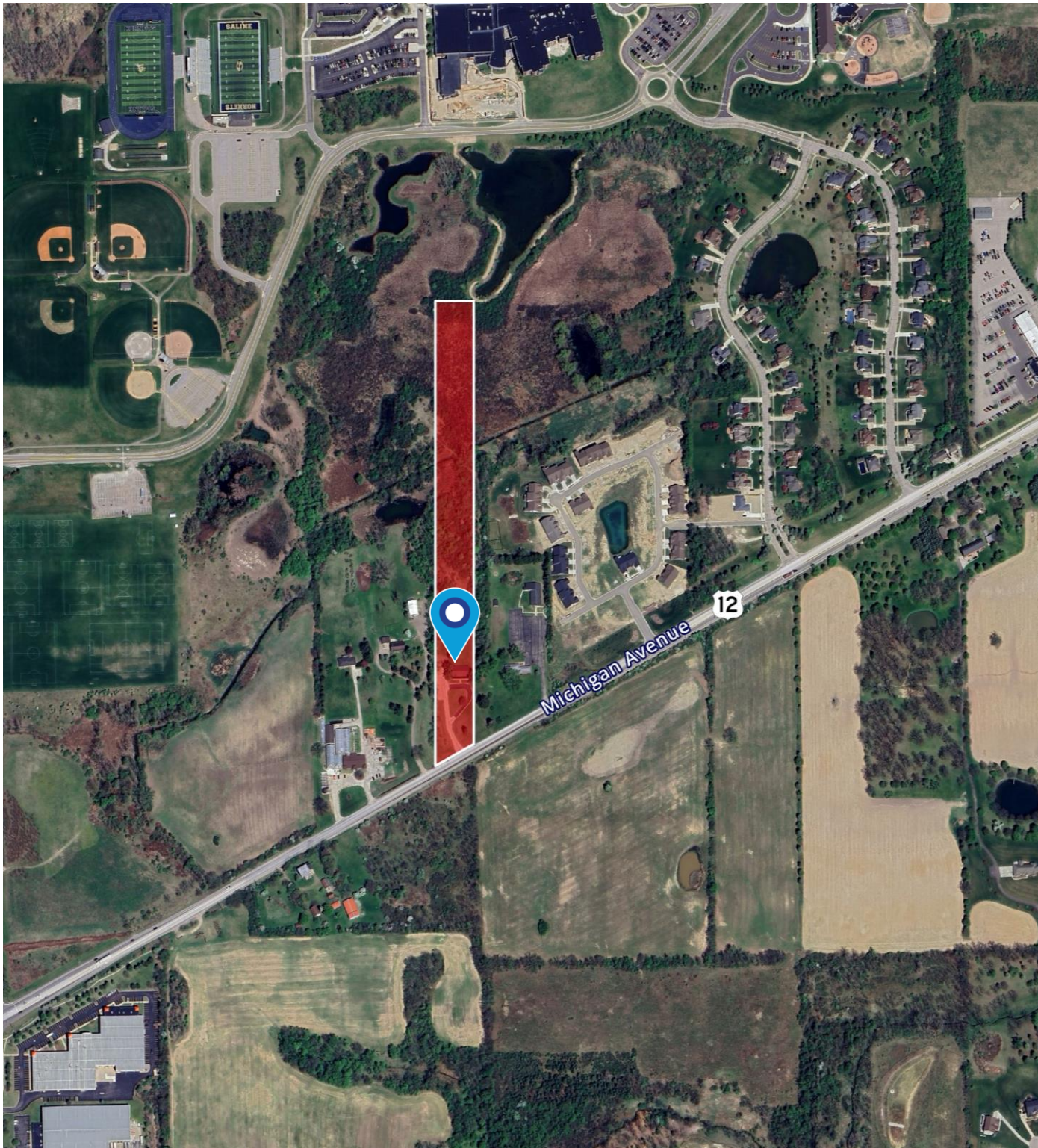
Location Map



OFFICE SPACE FOR LEASE

Colliers

Aerial Map



CHACONAS GROUP
ANN ARBOR AREA

734 994 3100 | annarbor@colliers.com

Colliers Ann Arbor, 1955 Pauline Blvd, Suite 400, Ann Arbor, MI 48103
colliersannarbor.com

We have no reason to doubt the accuracy of information contained herein, but we cannot guarantee it. All information should be verified prior to purchase and/or lease.