

50 SOUTH MERIDIAN  
renovations coming soon

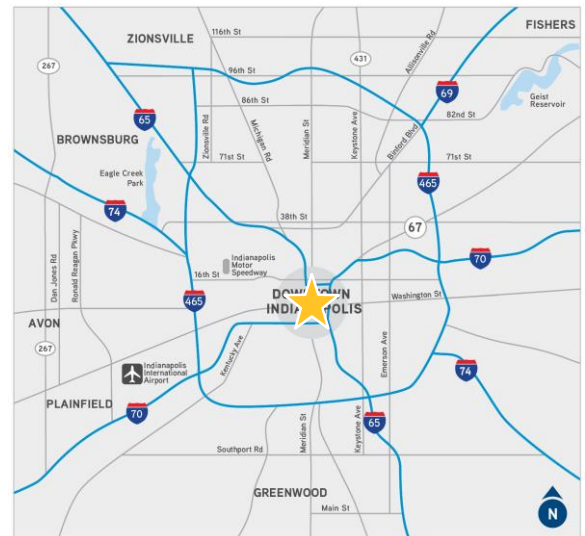


Connected to everything

Urbanism at its best

## FOR LEASE | 50 South Meridian Street | Indianapolis, IN

- ± 47,000 SF Office Building
- ± 12,000 SF available for lease
- 2-story atrium
- Exterior signage available
- Numerous parking options in close proximity
- Located on IndyGo bus line
- Nearby: Monument Circle, Circle Centre Mall, Indiana Convention Center, State Capitol and Government Center, Bankers Life Fieldhouse
- Within the Wholesale District
- Unbeatable amenity base (lodging/dining)



**RICH FORSLUND**  
Executive Vice President  
317.713.2172  
rich.j.forslund@colliers.com

**MATT LANGFELDT**  
Executive Vice President & Co-Market Leader  
317.713.2173  
matt.langfeldt@colliers.com

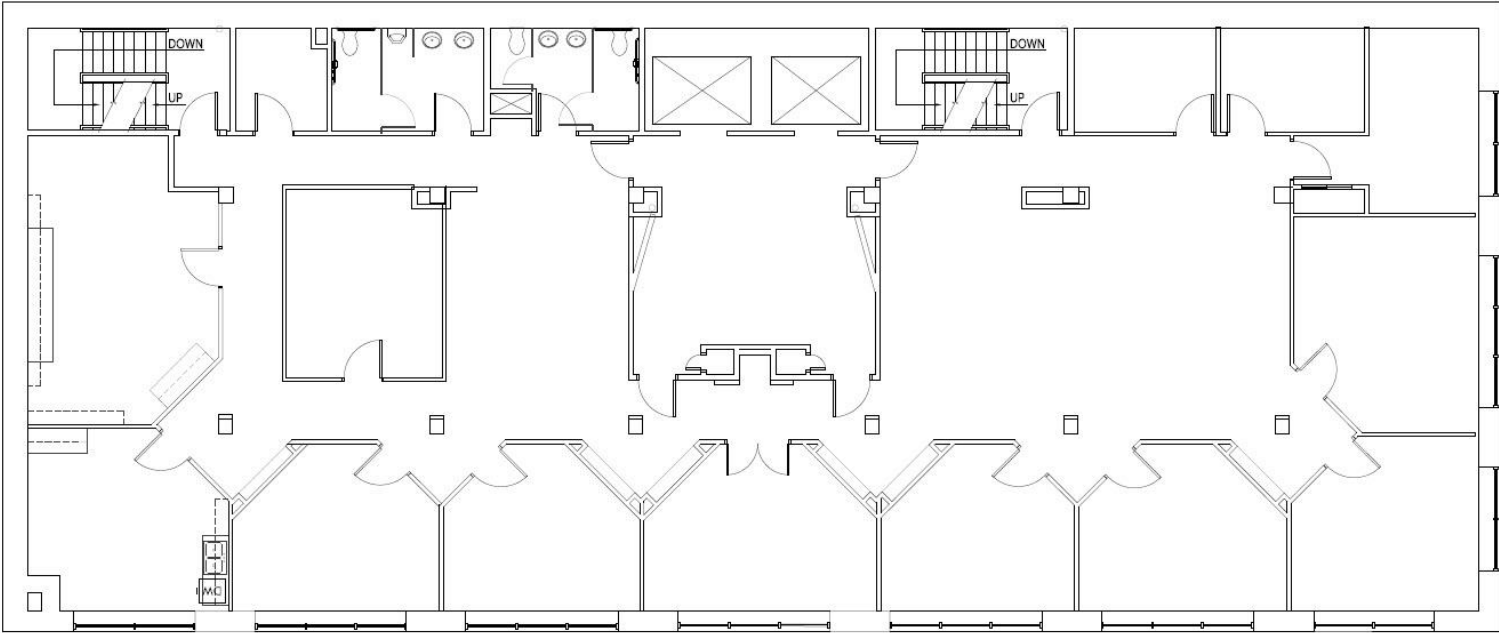


colliers.com/indianapolis



# Floorplate + Photo

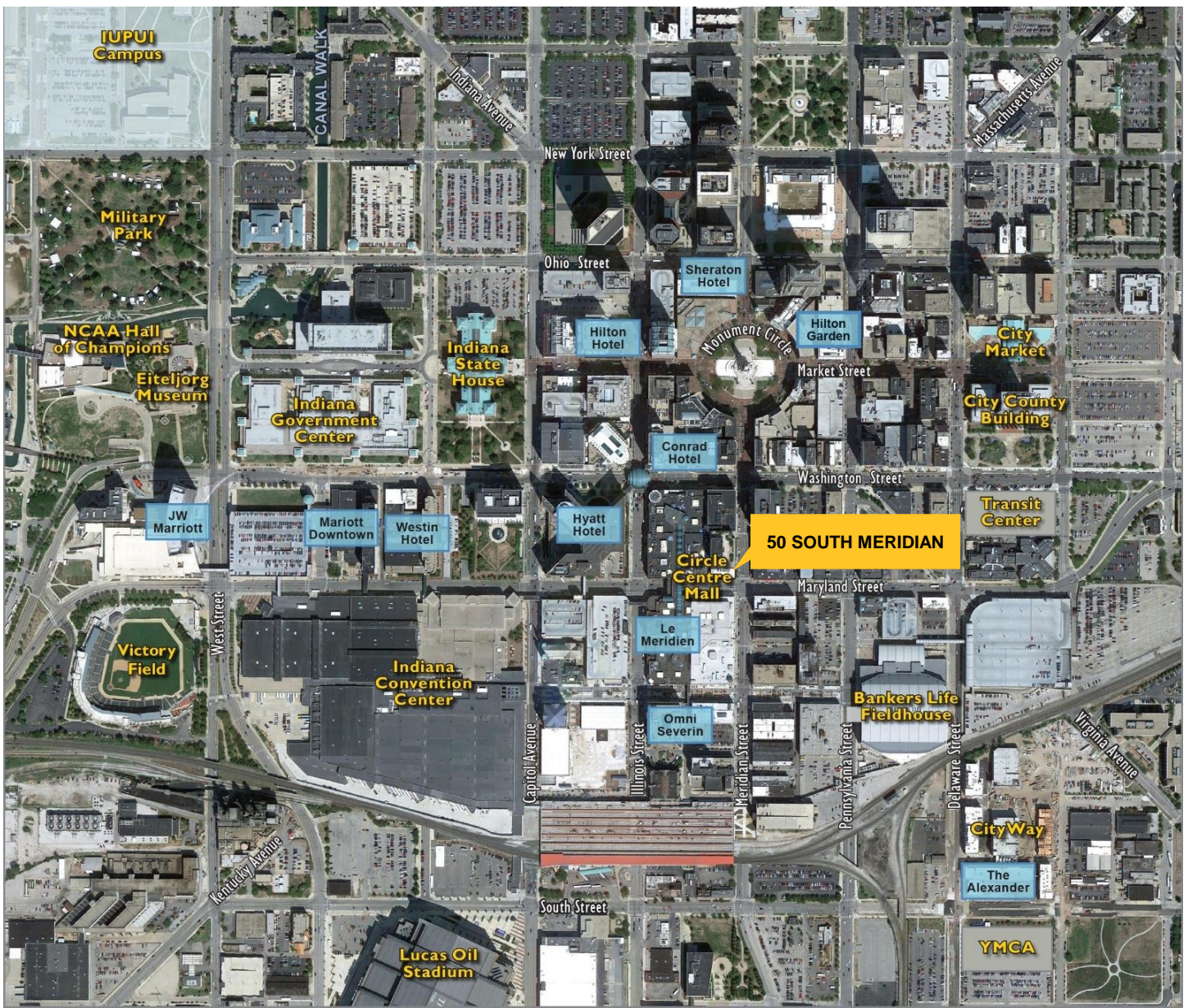
TYPICAL FLOORPLATE



# Gallery

A 2-story atrium greets you //  
Architectural detail // Strong natural  
light floods the atrium // Elevator lobby  
with 2nd floor overlook into the atrium





## PROPERTY INFORMATION

Total Area	± 47,000
# of Floors	8 (plus Lower Level)
Elevator(s)	2 passenger
Access	Fob security system with 24/7 access. Secured building with camera monitoring.
Data	High speed on-site
Year Built	1985 (renovations coming soon)
Restrooms	Central
Submarket	CBD
Rental Rates	\$18.00 psf Full Service
Zoned	C3
Interstate Access	Strong access to I-465, I-70 and I-65
Misc.	Janitorial / Maintenance / Recycle Program

## WALK SCORE: 93

Numerous amenities within walking distance

## TRANSIT SCORE: 64

Many nearby public transportation options

## BIKE SCORE: 94

Excellent, flat bike lanes

**RICH FORSLUND**  
Executive Vice President  
317.713.2172  
rich.j.forslund@colliers.com

**MATT LANGFELDT**  
Executive Vice President & Co-Market Leader  
317.713.2173  
matt.langfeldt@colliers.com



colliers.com/indianapolis