

FOR LEASE > RETAIL

THE GROVES RETAIL CENTER

33025-33043 GRAND RIVER AVENUE | FARMINGTON, MICHIGAN



NEWLY RENOVATED CENTER IN VIBRANT DOWNTOWN FARMINGTON

> PROPERTY HIGHLIGHTS

- 1,617 Square Foot Space Available
- Join T.J. Maxx, Dressbarn, Painting with a Twist, Belli's Spa, Chive Kitchen, The Cheese Lady, Earned Not Given Crossfit & Great Lakes Ace
- Adjacent to Fresh Thyme, Tuesday Morning, Fitness 19, Starbucks & Cold Stone Creamery
- Traffic Counts of 13,000 on Grand River Avenue and 16,000 on Farmington Road

DEMOGRAPHICS	Category	1 Mile	3 Mile	5 Mile
	Population	8,740	74,548	197,286
	Average Income	\$73,335	\$84,388	\$86,282
	Households	4,159	32,118	83,200

COLLIERS INTERNATIONAL
2 Corporate Drive | Suite 300
Southfield, Michigan 48076

For More Information Call:

BRIAN WHITFIELD

PHONE 248 540 1000 EXT 1646

EMAIL brian.whitfield@colliers.com



colliers.com/detroit



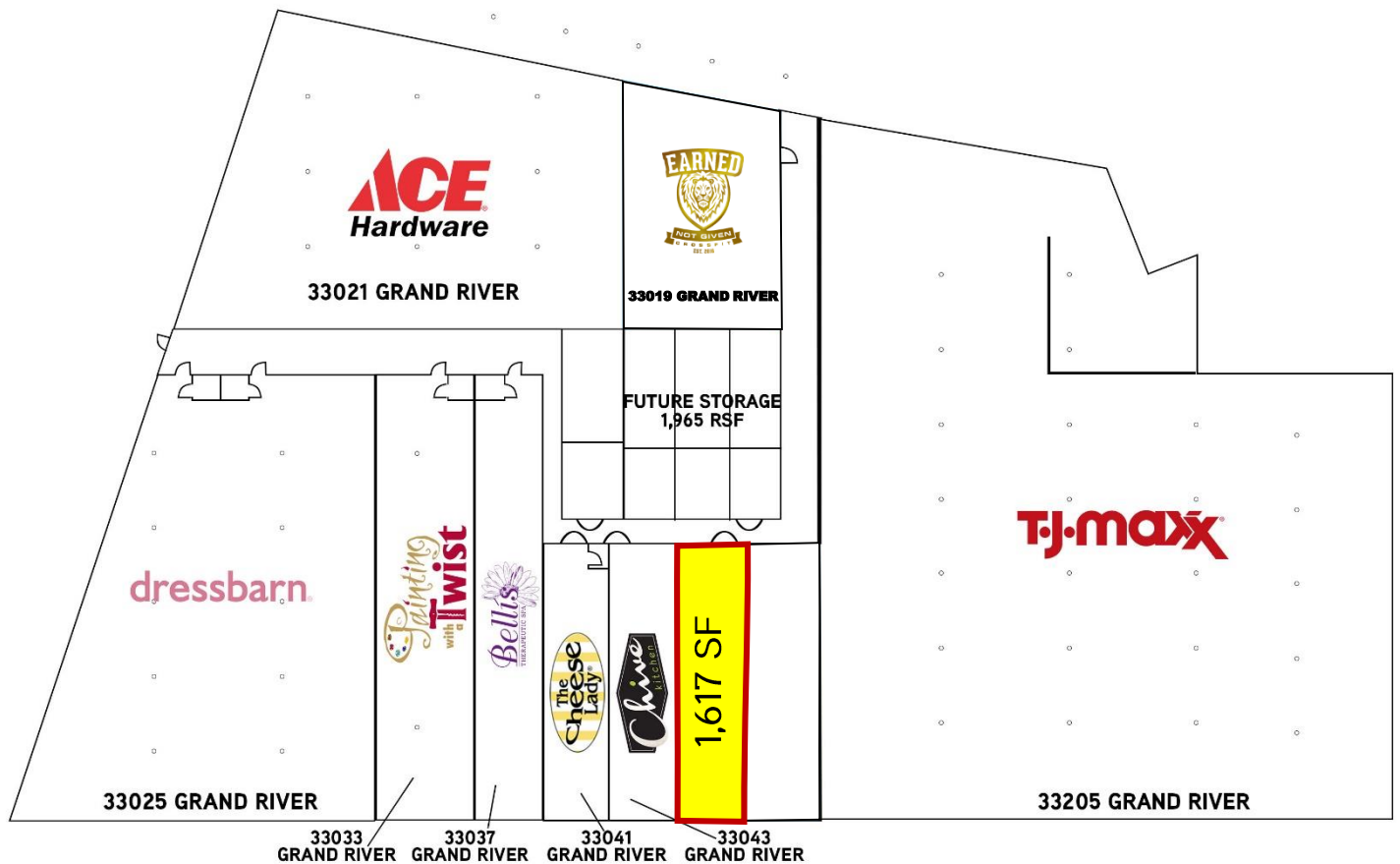
FOR LEASE > RETAIL

THE GROVES RETAIL CENTER

33025-33043 GRAND RIVER AVENUE | FARMINGTON, MICHIGAN



> SITE PLAN



BRIAN WHITFIELD

PHONE 248 540 1000 EXT 1646

EMAIL brian.whitfield@colliers.com



COLLIERS INTERNATIONAL

2 Corporate Dr. | Suite 300
Southfield, Michigan 48076

FOR LEASE > RETAIL

THE GROVES RETAIL CENTER

33025-33043 GRAND RIVER AVENUE | FARMINGTON, MICHIGAN



> PROPERTY PHOTOS



BRIAN WHITFIELD

PHONE 248 540 1000 EXT 1646

EMAIL brian.whitfield@colliers.com



COLLIERS INTERNATIONAL

2 Corporate Dr. | Suite 300
Southfield, Michigan 48076

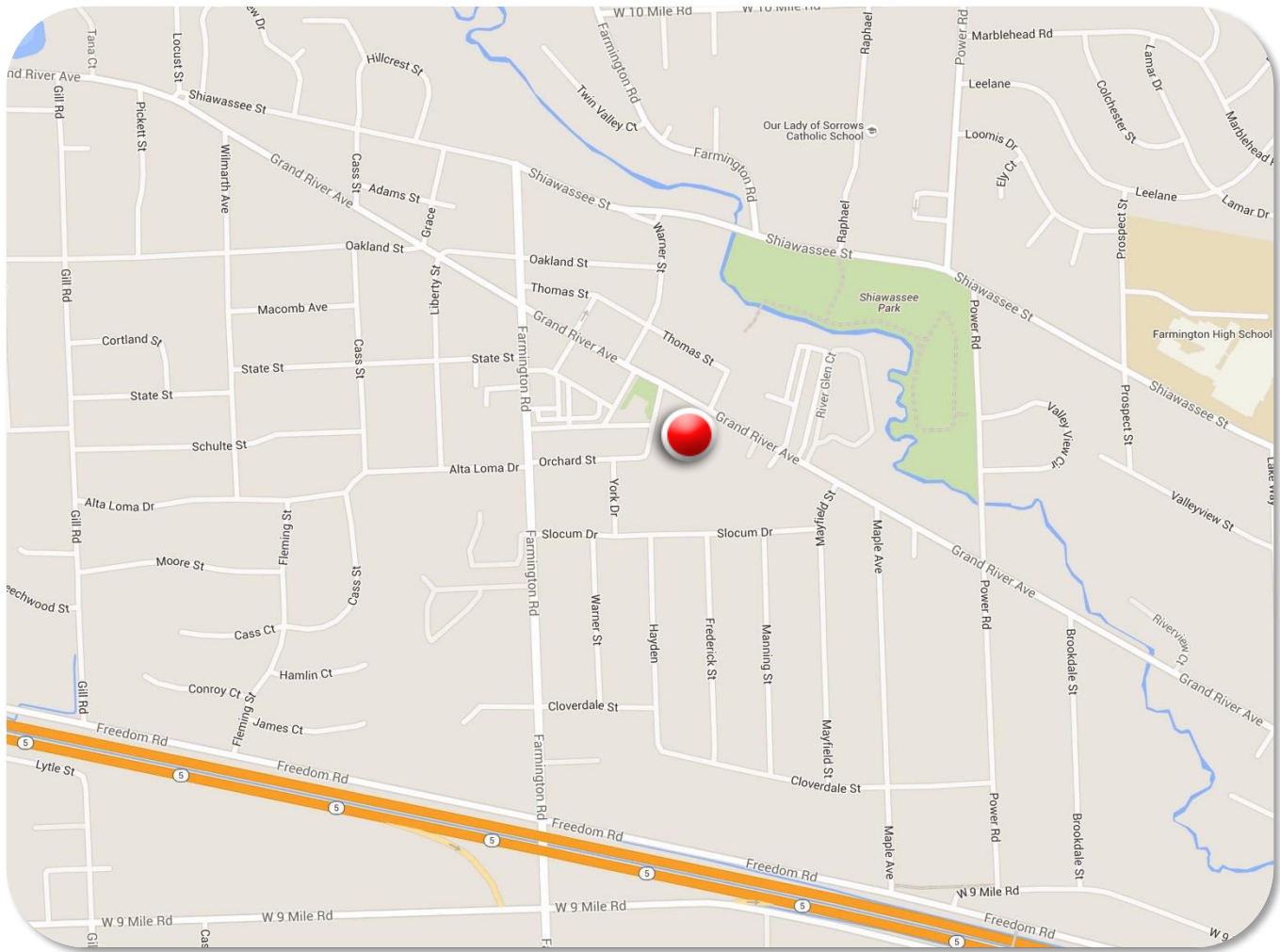
FOR LEASE > RETAIL

THE GROVES RETAIL CENTER

33025-33043 GRAND RIVER AVENUE | FARMINGTON, MICHIGAN



> LOCATION MAP



BRIAN WHITFIELD

PHONE 248 540 1000 EXT 1646

EMAIL brian.whitfield@colliers.com



COLLIERS INTERNATIONAL

2 Corporate Dr. | Suite 300
Southfield, Michigan 48076

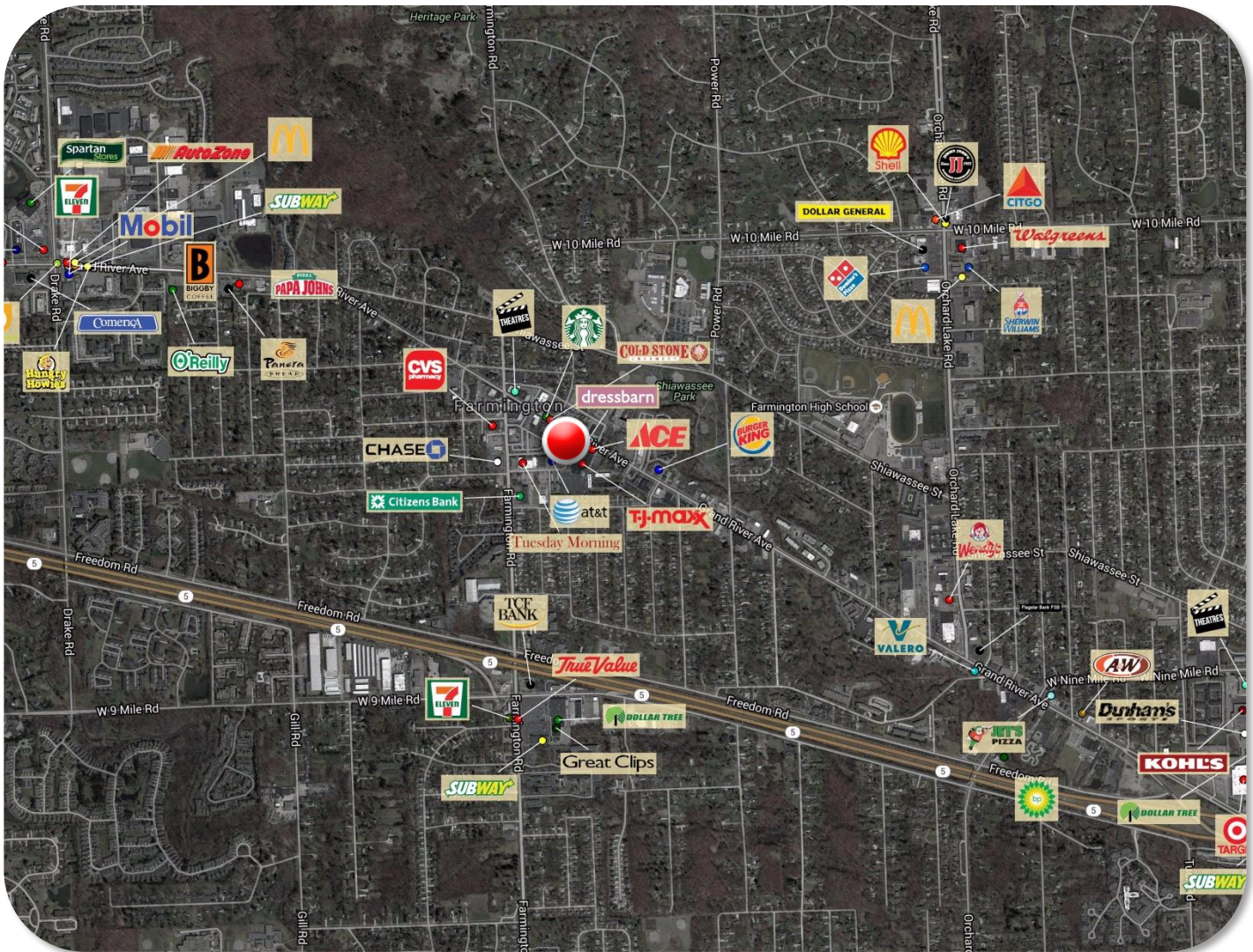
FOR LEASE > RETAIL

THE GROVES RETAIL CENTER

33025-33043 GRAND RIVER AVENUE | FARMINGTON, MICHIGAN



> AREA MERCHANT MAP



BRIAN WHITFIELD

PHONE 248 540 1000 EXT 1646

EMAIL brian.whitfield@colliers.com



COLLIERS INTERNATIONAL

2 Corporate Dr. | Suite 300
Southfield, Michigan 48076

SUMMARY PROFILE

2000-2010 Census, 2015 Estimates with 2020 Projections

Calculated using Weighted Block Centroid from Block Groups



Lat/Lon: 42.4628/-83.3730

RS1

33025 Grand River Ave

Farmington, MI 48336

1 mi radius

3 mi radius

5 mi radius

POPULATION	2015 Estimated Population	8,888	75,727	197,847
	2020 Projected Population	9,060	76,465	198,320
	2010 Census Population	8,740	74,548	197,286
	2000 Census Population	8,959	76,431	204,311
	Projected Annual Growth 2015 to 2020	0.4%	0.2%	-
	Historical Annual Growth 2000 to 2015	-0.1%	-0.1%	-0.2%
	2015 Median Age	45.9	41.4	42.6
HOUSEHOLDS	2015 Estimated Households	4,329	33,540	86,088
	2020 Projected Households	4,504	34,583	88,300
	2010 Census Households	4,159	32,118	83,200
	2000 Census Households	4,172	32,371	83,402
	Projected Annual Growth 2015 to 2020	0.8%	0.6%	0.5%
	Historical Annual Growth 2000 to 2015	0.3%	0.2%	0.2%
RACE AND ETHNICITY	2015 Estimated White	81.0%	69.4%	69.0%
	2015 Estimated Black or African American	9.6%	16.1%	19.7%
	2015 Estimated Asian or Pacific Islander	6.9%	11.6%	8.6%
	2015 Estimated American Indian or Native Alaskan	0.2%	0.2%	0.2%
	2015 Estimated Other Races	2.4%	2.6%	2.6%
	2015 Estimated Hispanic	2.1%	2.4%	2.4%
INCOME	2015 Estimated Average Household Income	\$73,335	\$84,388	\$86,282
	2015 Estimated Median Household Income	\$56,640	\$67,056	\$69,482
	2015 Estimated Per Capita Income	\$35,819	\$37,446	\$37,616
EDUCATION (AGE 25+)	2015 Estimated Elementary (Grade Level 0 to 8)	2.0%	2.3%	2.2%
	2015 Estimated Some High School (Grade Level 9 to 11)	3.7%	3.4%	4.0%
	2015 Estimated High School Graduate	18.2%	18.3%	19.8%
	2015 Estimated Some College	22.1%	20.8%	21.5%
	2015 Estimated Associates Degree Only	7.2%	8.2%	8.0%
	2015 Estimated Bachelors Degree Only	26.1%	26.6%	25.6%
	2015 Estimated Graduate Degree	20.7%	20.4%	19.0%
BUSINESS	2015 Estimated Total Businesses	637	3,980	12,080
	2015 Estimated Total Employees	5,259	57,107	167,376
	2015 Estimated Employee Population per Business	8.3	14.3	13.9
	2015 Estimated Residential Population per Business	13.9	19.0	16.4

This report was produced using data from private and government sources deemed to be reliable. The information herein is provided without representation or warranty.