

FOR LEASE > OFFICE BUILDING

# 400 Corporate Center Drive

CHERRINGTON CORPORATE CENTER, BUILDING 400, MOON TOWNSHIP, PA 15108



## Property Information

- > Full building available | Up to 63,182 SF
- > Planned full building renovations in 2015
- > Building signage opportunity
- > Easy access to transportation corridors and excellent visibility in a premier suburban office park
- > Property management on-site
- > Institutional grade ownership

## Building 400 > Amenities

- > Park like setting
- > Abundant free parking
- > Embassy Suites & Marriott Courtyard within walking distance

## LEASE > RATE

Please contact one of our exclusive leasing professionals to discuss lease terms



**Equity  
Commonwealth**



PAUL HORAN  
FOUNDING PRINCIPAL | PITTSBURGH  
OFFICE BROKERAGE  
412 321 4200 | EXT. 205  
paul.horan@colliers.com

EDWARD LAWRENCE - MBA  
PRINCIPAL | PITTSBURGH  
OFFICE BROKERAGE  
412 321 4200 | EXT. 213  
ed.lawrence@colliers.com

ALEXIS WILKERSON  
ASSOCIATE | PITTSBURGH  
OFFICE BROKERAGE  
412 321 4200 | EXT. 225  
alexis.wilkerson@colliers.com

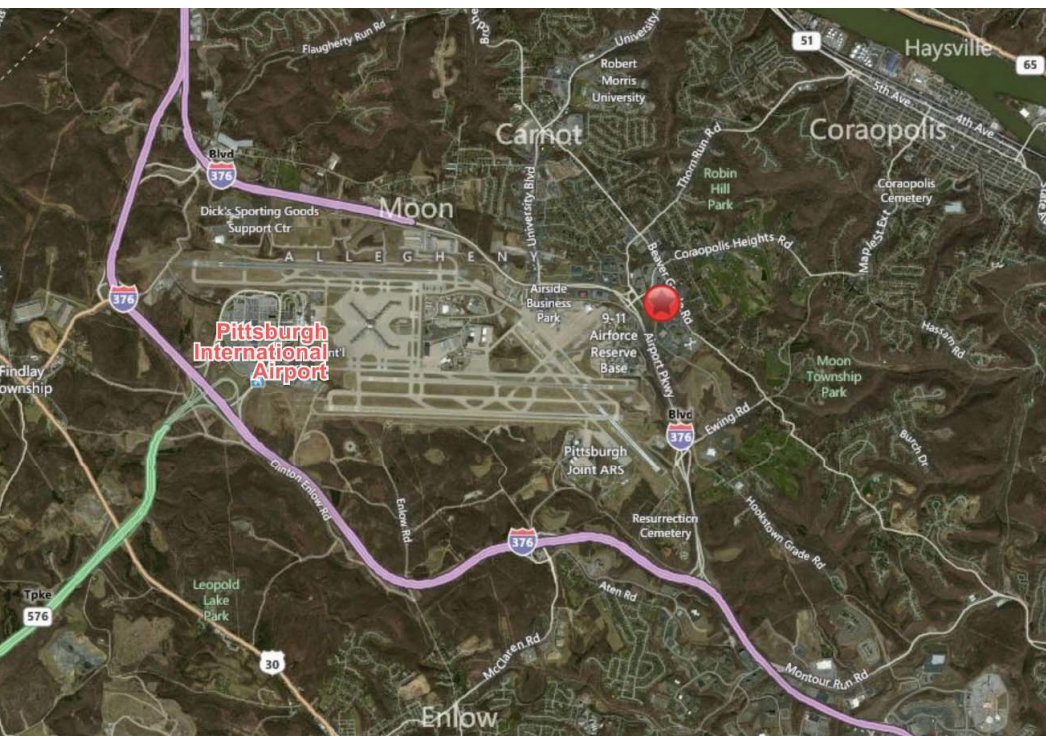




**4th Floor "As-Built" | 19,400 SF**

## Location > Access

Situated along the Parkway West Corridor, Cherrington Corporate Center | Building 400 is accessible via two interchanges from Route 60 (Ewing Road and Thorn Run Road), located in close proximity to the Pittsburgh International Airport and just 20 minutes to downtown Pittsburgh.



## Contact Us

PAUL HORAN

FOUNDING PRINCIPAL | PITTSBURGH

OFFICE BROKERAGE

412 321 4200 | EXT. 205

[paul.horan@colliers.com](mailto:paul.horan@colliers.com)

EDWARD LAWRENCE MBA

PRINCIPAL | PITTSBURGH

OFFICE BROKERAGE

412 321 4200 | EXT. 213

[ed.lawrence@colliers.com](mailto:ed.lawrence@colliers.com)

ALEXIS WILKERSON

ASSOCIATE | PITTSBURGH

OFFICE BROKERAGE

412 321 4200 | EXT. 225

[alexis.wilkerson@colliers.com](mailto:alexis.wilkerson@colliers.com)

COLLIERS INTERNATIONAL | PITTSBURGH

Two Gateway Center, Suite 125

603 Stanwix Street

Pittsburgh, PA 15222

[www.colliers.com/pittsburgh](http://www.colliers.com/pittsburgh)