

FOR LEASE > OFFICE/FLEX

Interstate Business Park

3601-3721 SAUNDERS AVENUE | RICHMOND, VIRGINIA 23230



Property Features

- > High-end office-warehouse space
- > 16' clear ceilings
- > Dock and drive-in loading
- > Located directly off the I-195 Downtown Expressway
- > Ample parking available
- > Exterior suite signage
- > Excellent accessibility to all areas of Greater Richmond
- > Flexible to accommodate a variety of users

SUITES AVAILABLE

Suite 3707 6,514 SF available 11-1-18
Two (2) loading docks

AGENT: JASON HETHERINGTON, SIOR
804 591 2407
RICHMOND, VA
jason.hetherington@colliers.com

AGENT: CHRIS WALLACE
804 591 2424
RICHMOND, VA
chris.wallace@colliers.com

COLLIERS INTERNATIONAL
7200 Glen Forest Drive, Suite 200
Richmond, VA 23226
www.colliers.com/richmond

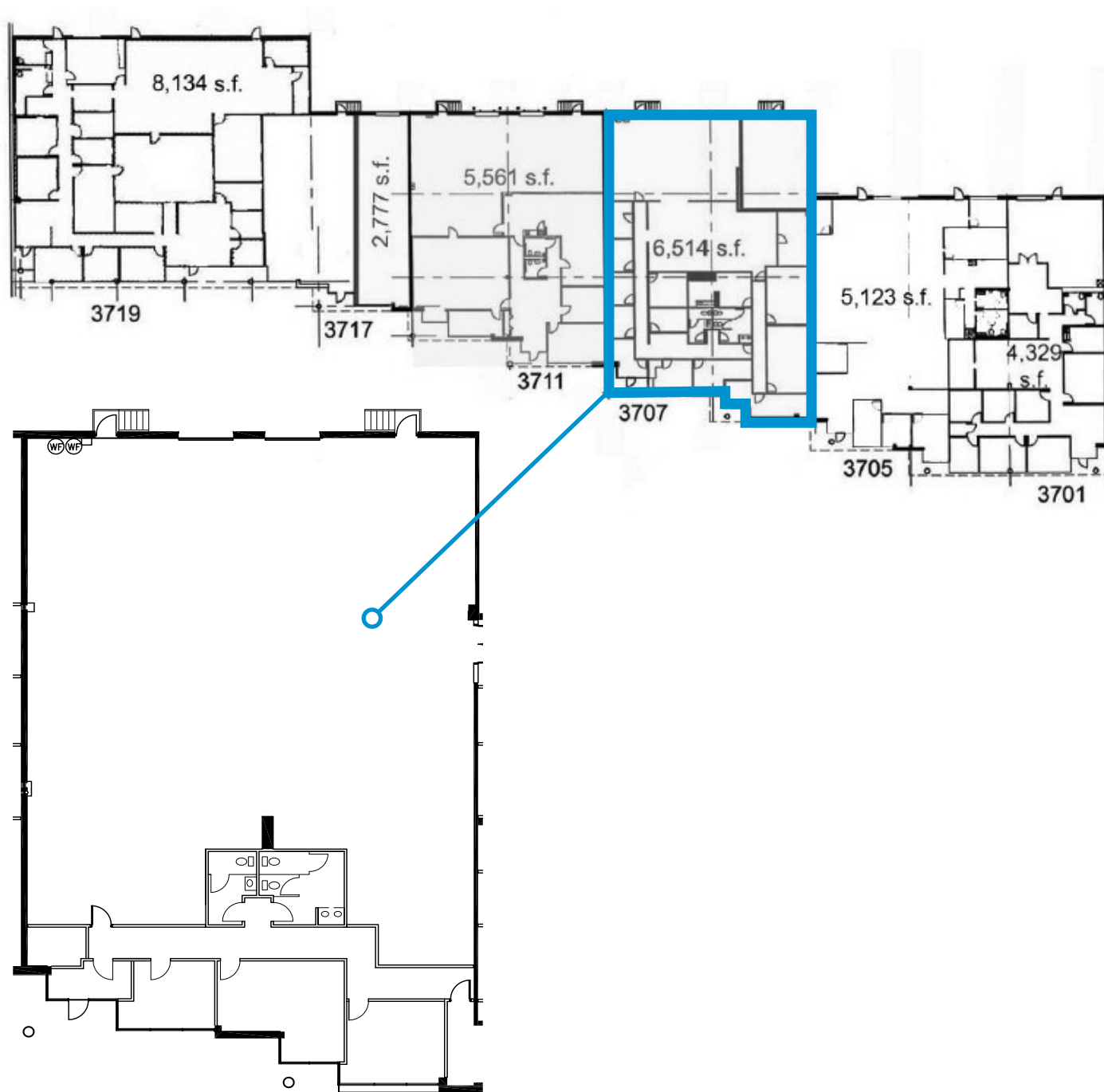
FOR LEASE > OFFICE/FLEX

Interstate Business Park

3601-3721 SAUNDERS AVENUE | RICHMOND, VIRGINIA 23230



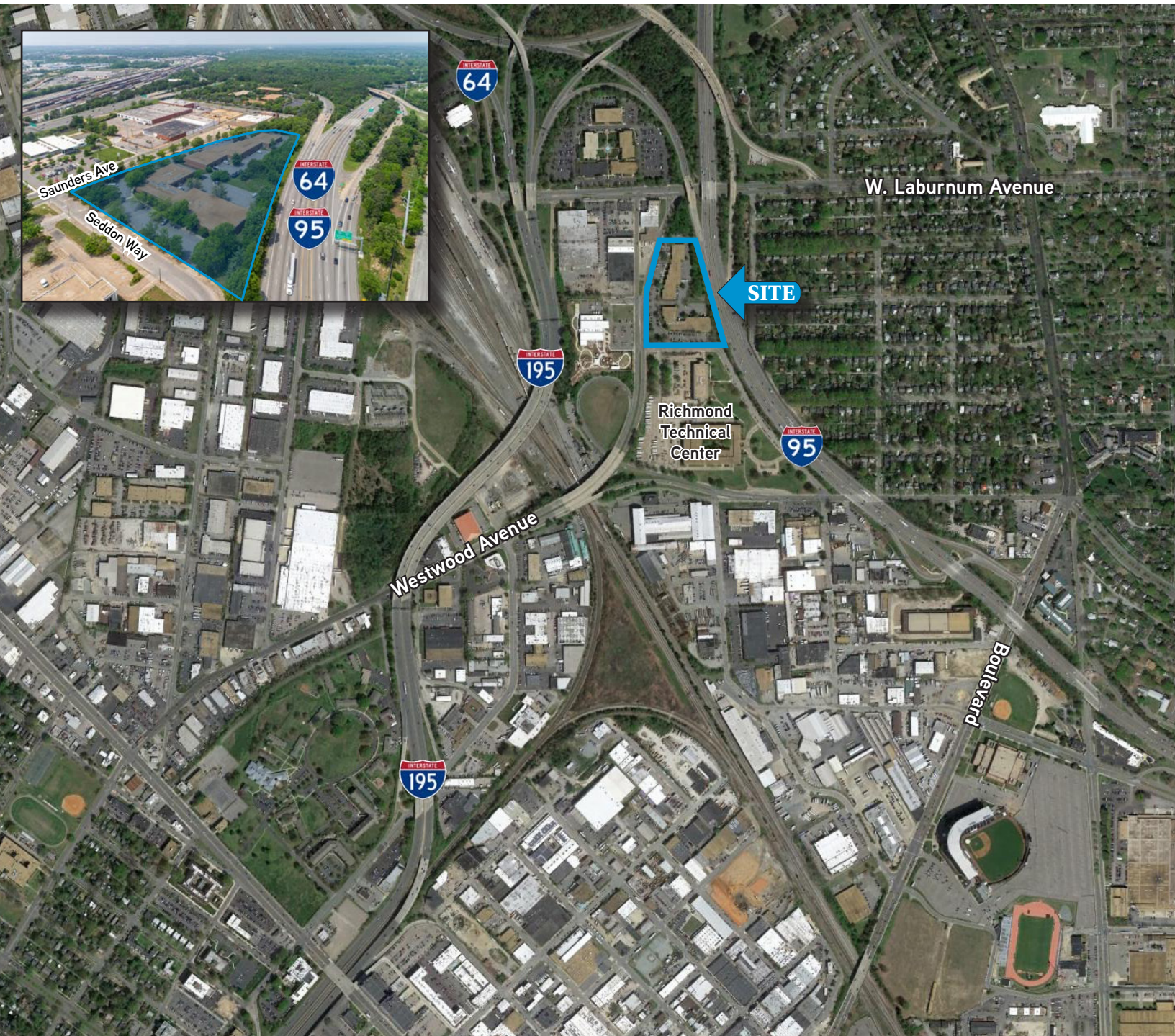
Suite 3707 6,514 SF available 11-1-18
Two (2) loading docks



FOR LEASE > OFFICE/FLEX

Interstate Business Park

3601-3721 SAUNDERS AVENUE | RICHMOND, VIRGINIA 23230



AGENT: JASON HETHERINGTON, SIOR
804 591 2407
RICHMOND, VA
jason.hetherington@colliers.com

AGENT: CHRIS WALLACE
804 591 2424
RICHMOND, VA
chris.wallace@colliers.com

COLLIERS INTERNATIONAL
7200 Glen Forest Drive, Suite 200
Richmond, VA 23226
www.colliers.com/richmond

The information contained herein was obtained from sources, believed reliable, however, Colliers International makes no guarantees, warranties or representations as to the completeness or accuracy thereof. The presentation of this property is submitted subject to errors, omissions, change of price or conditions prior to sale or lease, or withdrawal without notice. File Name: Interstate-BusinessPark_Lease rev 6-21-18