

FOR LEASE > MEDICAL SPACE

TARZANA MEDICAL PLAZA

5525 ETIWANDA AVENUE, TARZANA, CA



AVAILABLE SUITES

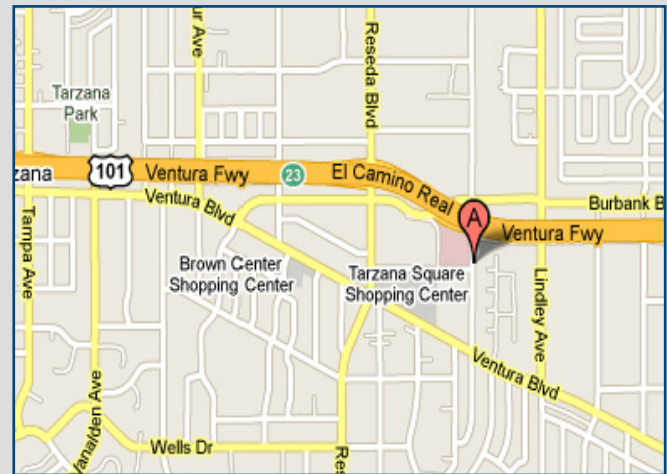
Suite 211 ±2,959 SF

FEATURES

- > Direct access to Providence Tarzana Medical Center
- > On-site pharmacy
- > Street amenities within walking distance
- > Direct 101 freeway access

RENTAL RATE

\$3.85 sq. ft. Full Service Gross



COLLIERS INTERNATIONAL
16830 Ventura Boulevard, Suite J
Encino, CA 91436
www.colliers.com

AGENT: ANGIE WEBER
LICENSE NO. 01015031
818 905 5800 | EXT. 4114
angie.weber@colliers.com

AGENT: DANA NIALIS
LICENSE NO. 01947265
818 905 5800 | EXT. 4107
dana.nialis@colliers.com

FOR LEASE > MEDICAL SPACE

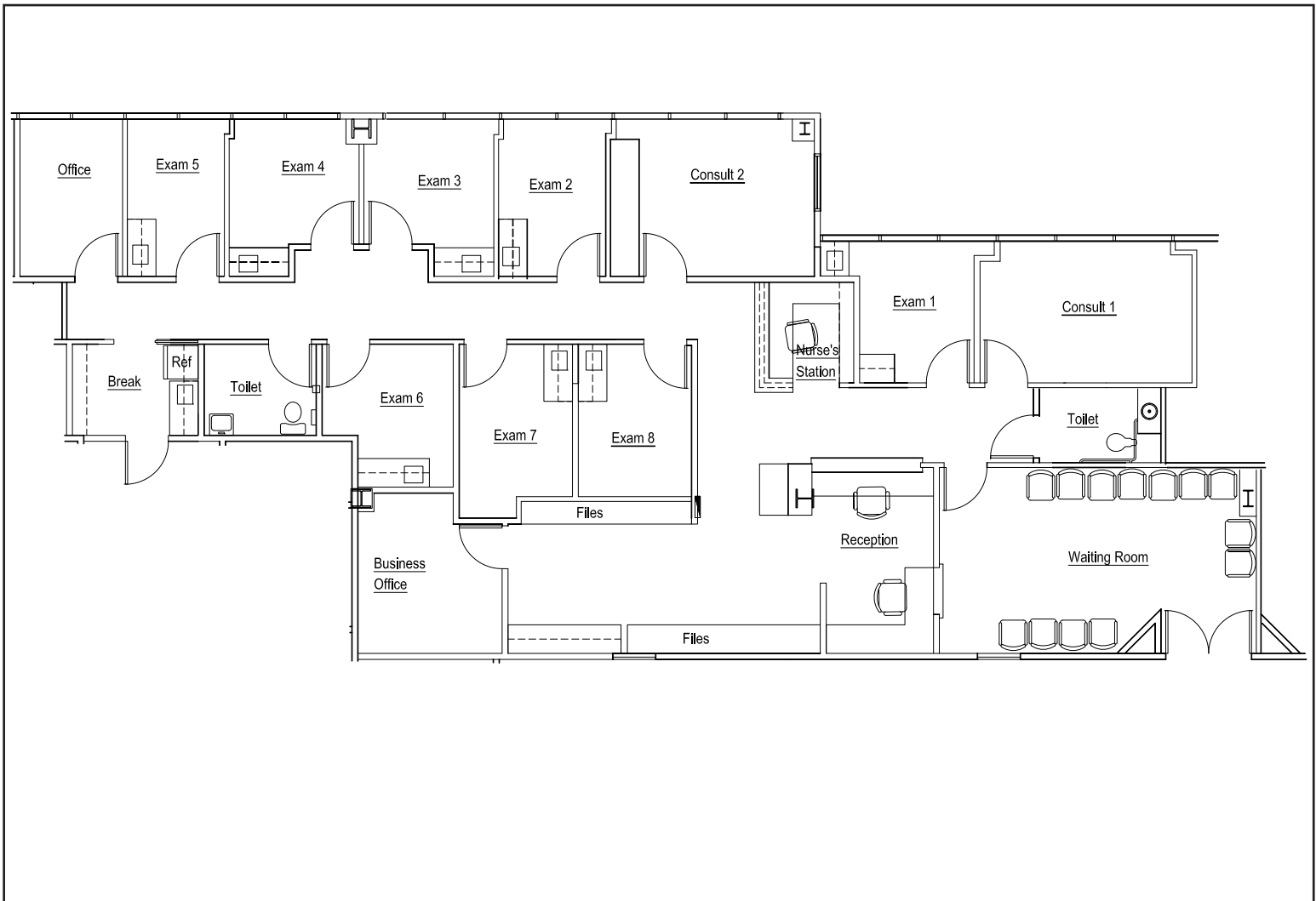
TARZANA MEDICAL PLAZA

5525 ETIWANDA AVENUE, TARZANA, CA



Suite 211

± 2,959 RSF



AGENT: ANGIE WEBER
LICENSE NO. 01015031
818 905 5800 | EXT. 4114
angie.weber@colliers.com

AGENT: DANA NIALIS
LICENSE NO. 01947265
818 905 5800 | EXT. 4107
dana.nialis@colliers.com