

Building & Land For Sale

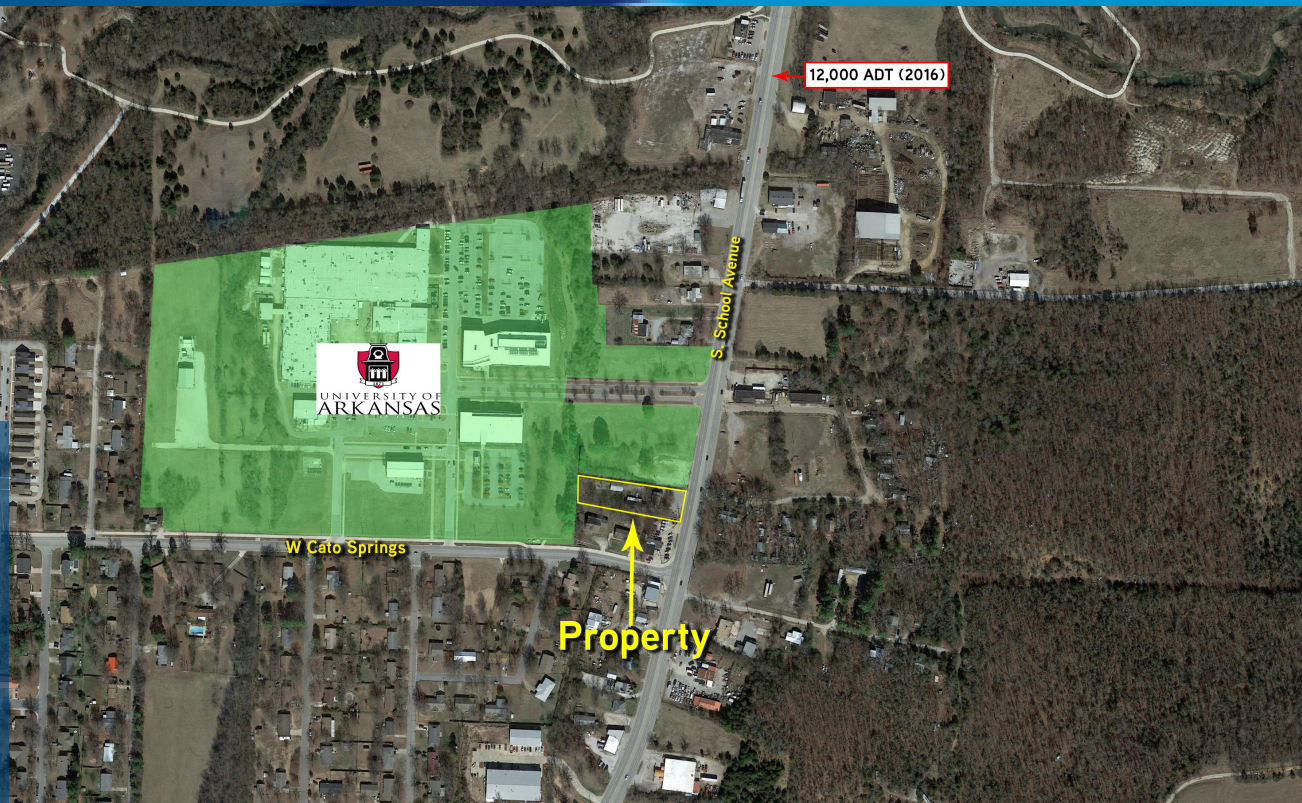
2087 S. School Avenue
Fayetteville, AR

BUTCH GURGANUS
PRINCIPAL | BROKER
DIR: 479 845 1504
MOB: 479 644 7266
butch.gurganus@colliers.com



COLLIERS INTERNATIONAL
4204 S Pinnacle Hills Pkwy, Ste 102
Rogers, AR 72758
479 636 9000
www.colliers.com/arkansas

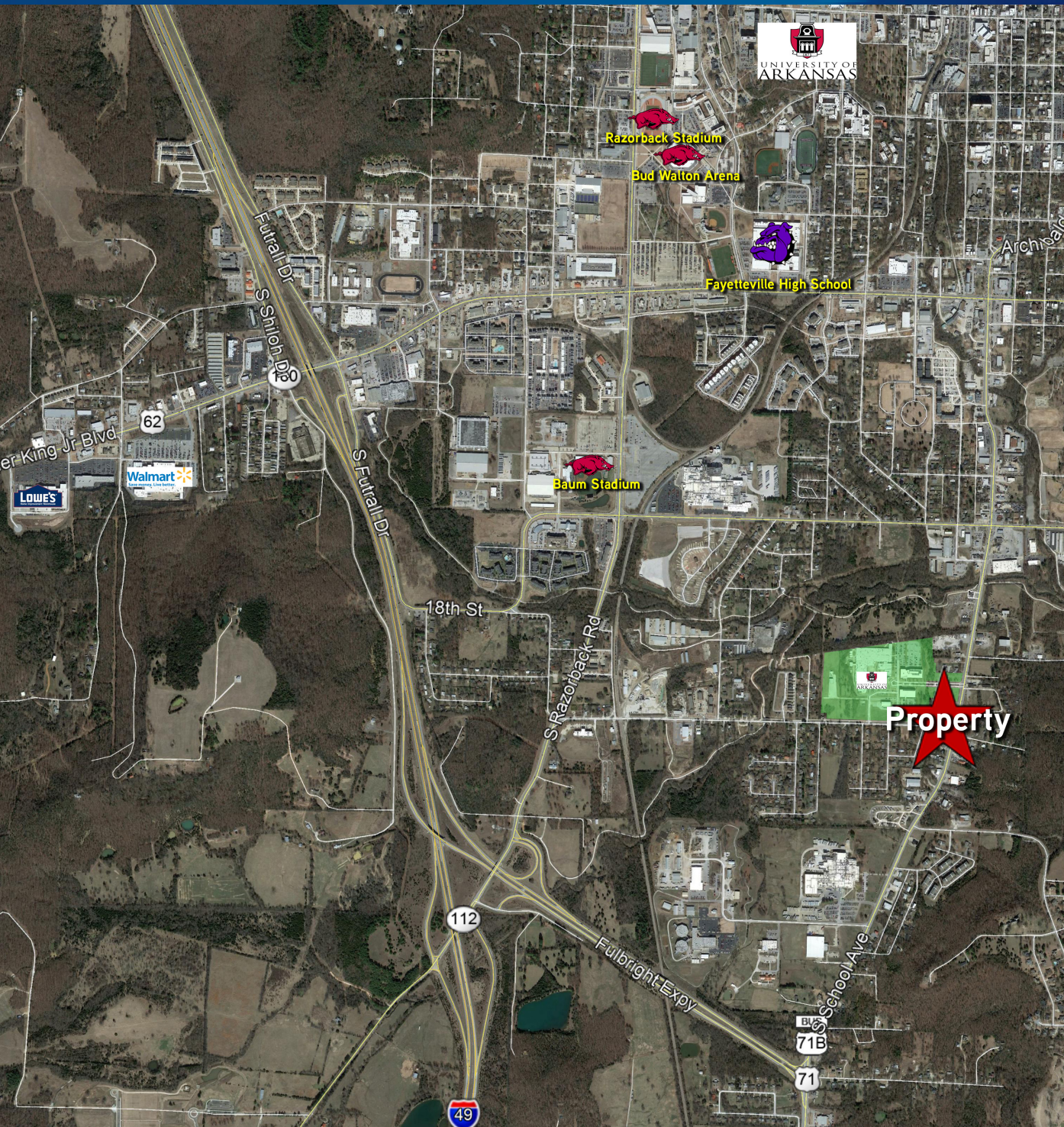
Accelerating success.



KEY FEATURES/HIGHLIGHTS

PRICE: \$245,000

- › 0.75 +/- Acres
- › 3,904 Square Foot Building
- › Located on the NW Corner of S. School Avenue and W. Cato Springs Road in Fayetteville
- › Close proximity to the University of Arkansas
- › Easy access from Fullbright Expressway and Hwy 71



Demographic	1 Mile	3 Miles	5 Miles
Total Population 2017	4,942	35,475	81,754
Projected Population 2022	5,439	38,379	89,683
Estimated Households 2017	536	3,875	7,309
Projected Households 2022	592	4,350	8,222
Average Household Income 2017	\$40,416	\$48,091	\$57,471

CONTACT US

BUTCH GURGANUS
 MOB: 479 644 7266
butch.gurganus@colliers.com

This document has been prepared by Colliers International for advertising and general information only. Colliers International makes no guarantees, representations or warranties of any kind, expressed or implied, regarding the information including, but not limited to, warranties of content, accuracy and reliability. Any interested party should undertake their own inquiries as to the accuracy of the information. Colliers International excludes unequivocally all inferred or implied terms, conditions and warranties arising out of this document and excludes all liability for loss and damages arising there from. This publication is the copyrighted property of Colliers International and/or its licensor(s). ©2016. All rights reserved.