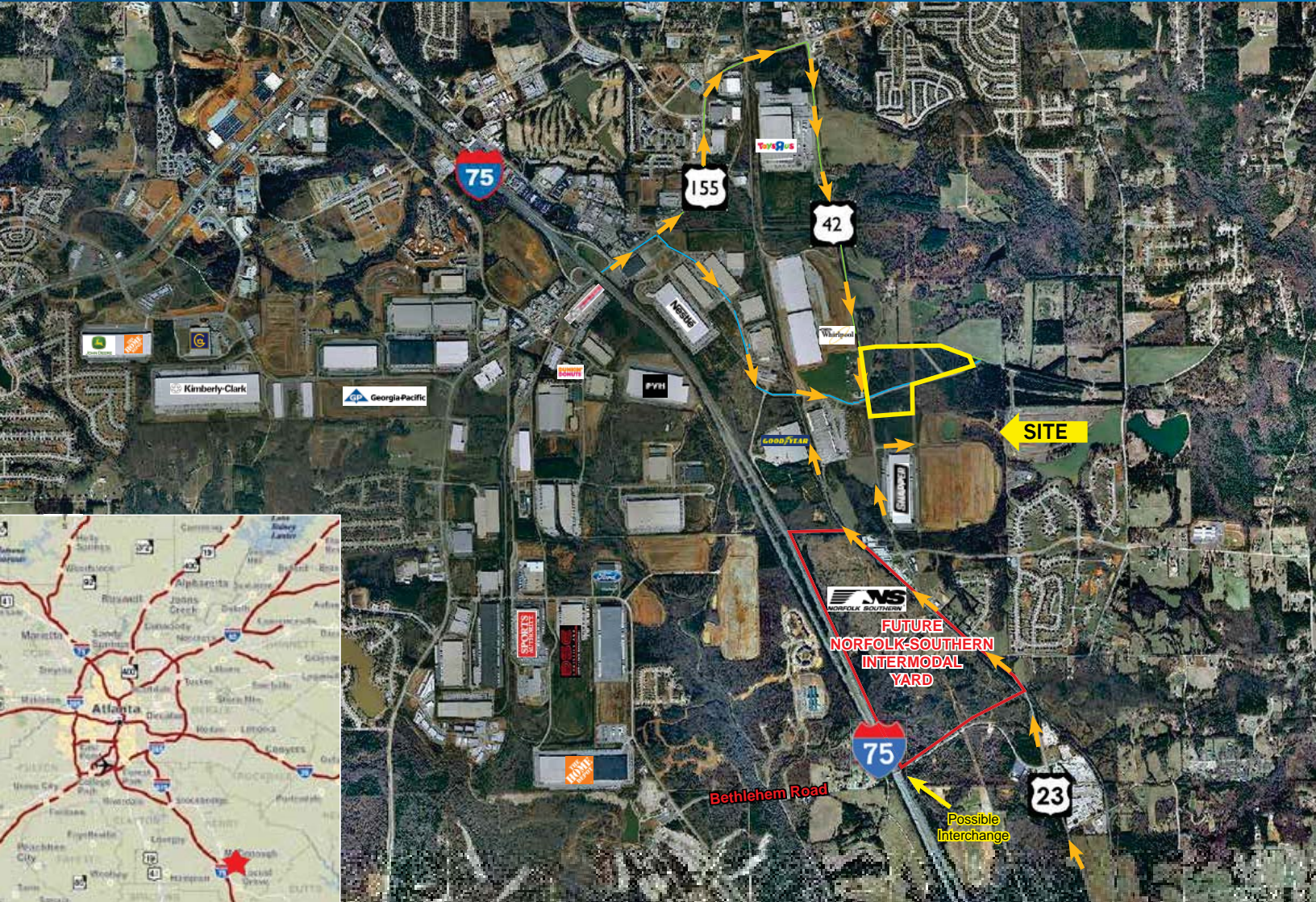


10 +/- ACRES SALE > HENRY COUNTY

King Mill



GA HIGHWAY 42 & KING MILL ROAD, MCDONOUGH (HENRY COUNTY), GA 30253



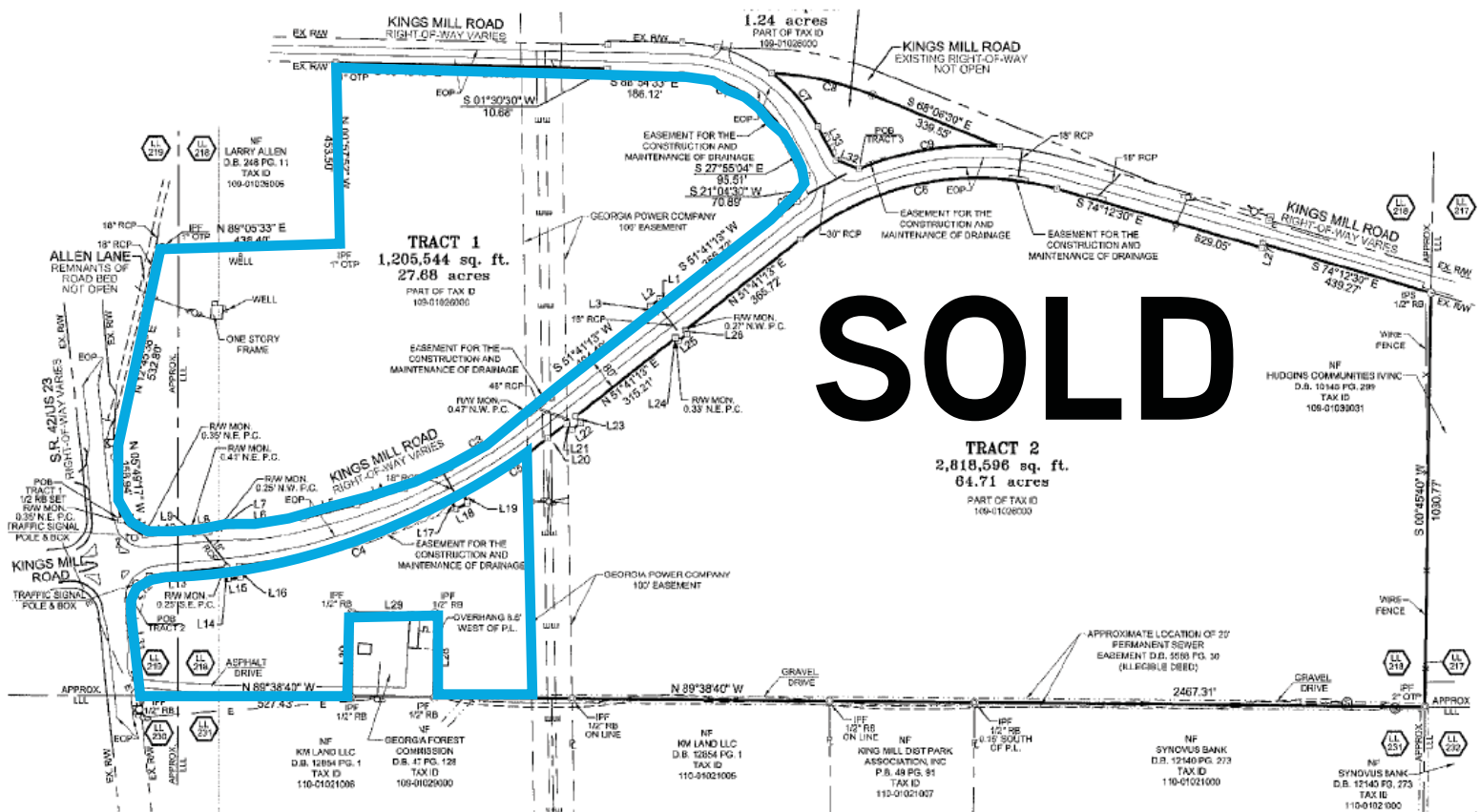
Potential Retail Industrial Development Site

- > Sites from 4 Acres to 10 Acres
- > "Future Industrial" Land Use Plan
- > New King Mill Road Extension
- > New signaled King Mill Road / Highway 42 Intersection
- > Two Potential Retail Corner Lots
- > Utilities Available
- > Level, Useable Property
- > Abuts Panattoni 3 million square feet "Lambert Farms" Project

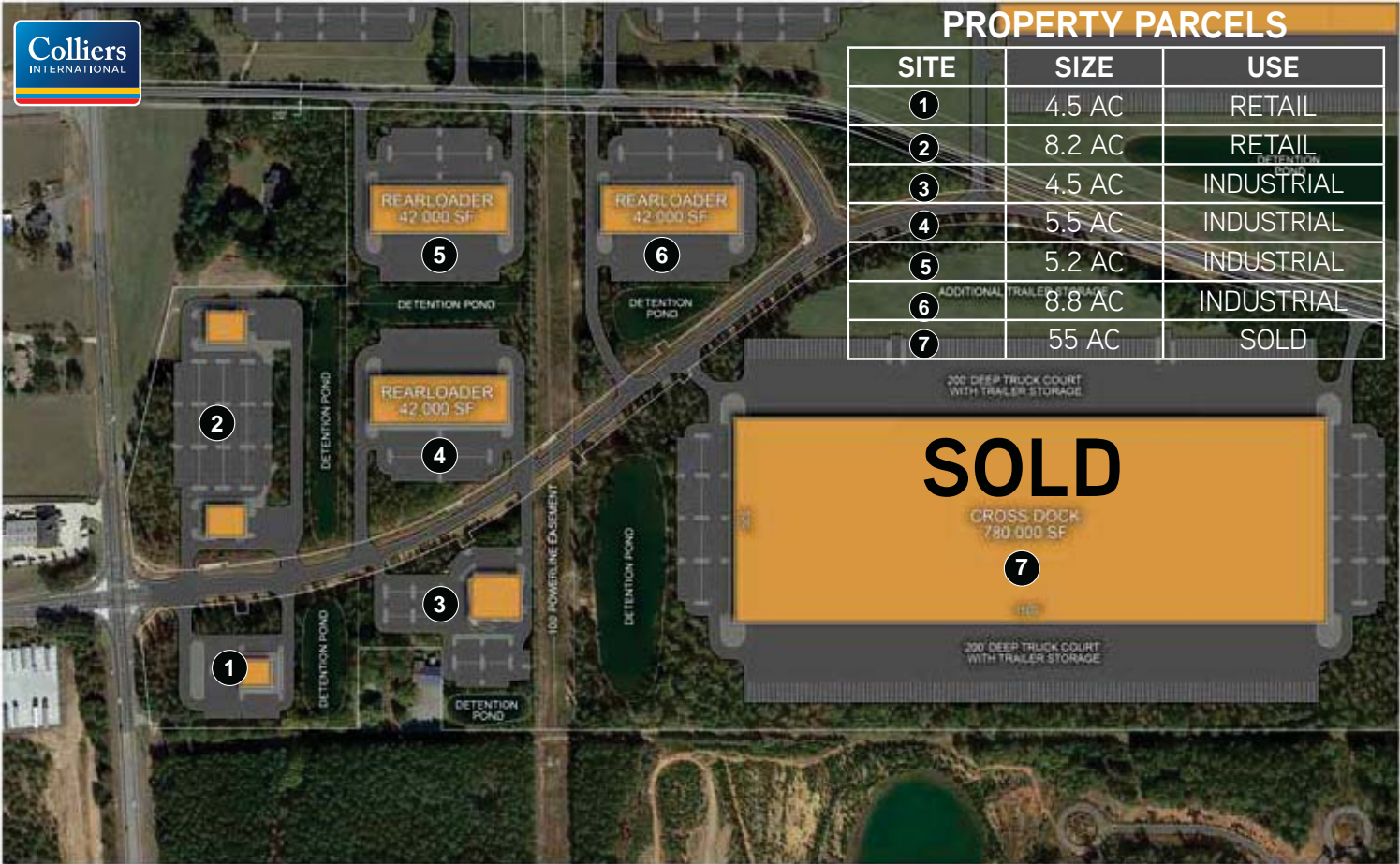
CALDWELL ZIMMERMAN
404 877 9234 DIRECT
caldwell.zimmerman@colliers.com

COLLIERS INTERNATIONAL
Promenade, Suite 800
1230 West Peachtree Street NE
Atlanta, Georgia 30309-3574
www.colliers.com

King Mill > Aerial Photo and Site Survey



King Mill > Conceptual Site Plan & Pricing Schedule



SITE	SIZE	PRICE	USE
1	4.5 AC	\$150,000/AC	RETAIL
2	8.2 AC	\$125,000/AC	RETAIL
3	4.5 AC	\$85,000/AC	INDUSTRIAL
4	5.5 AC	\$85,000/AC	INDUSTRIAL
5	5.2 AC	\$75,000/AC	INDUSTRIAL
6	8.8 AC	\$80,000/AC	INDUSTRIAL
7	55 AC	SOLD	INDUSTRIAL

* SUBJECT TO RE-ZONING

