

FOR SALE

OFFICE/FLEX SPACE FOR SALE

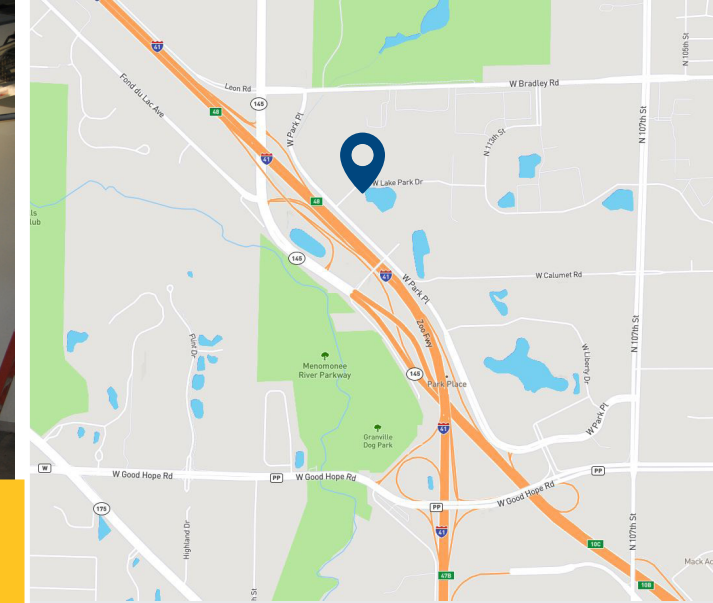
Park Place III

12000 W Park Place - Milwaukee, WI 53224

JOSEPH F LAK JR | 414 278 6824 | joe.lak@colliers.com

BEN ANDERSON | 414 278 6848 | ben.anderson@colliers.com





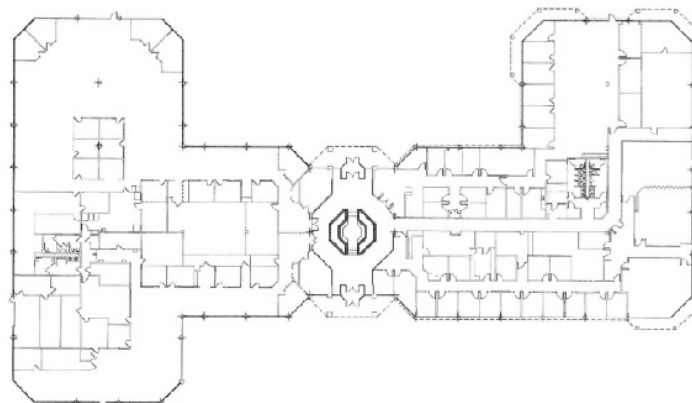
12000 W Park Place - Milwaukee, WI

FOR SALE

Building Details

Building Type	Class A multi-tenant Office
Building Size	37,399 SF
Lot Size	3.67 Acres
Stories	1
Year Built	1985/Renovated in 1995
Parking	3.71/1,000 SF
Tax Key	07600020000
Sale Price	\$930,000

Floor Plan



Contact Us

JOSEPH F LAK JR
414 278 6824
joe.lak@colliers.com

BEN ANDERSON
414 278 6848
ben.anderson@colliers.com

Property Highlights

- > Full building vacancy
- > Great glass lines for year-round views of beautifully landscaped grounds
- > Overhead door and scissor lift
- > Easy North and South bound freeway access from Good Hope Road and Highway 45
- > Highway 45 visibility



This document/email has been prepared by Colliers International for advertising and general information only. Colliers International makes no guarantees, representations or warranties of any kind, expressed or implied, regarding the information including, but not limited to, warranties of content, accuracy and reliability. Any interested party should undertake their own inquiries as to the accuracy of the information. Colliers International excludes unequivocally all inferred or implied terms, conditions and warranties arising out of this document and excludes all liability for loss and damages arising there from. This publication is the copyrighted property of Colliers International and/or its licensor(s). © 2016. All rights reserved. This communication is not intended to cause or induce breach of an existing listing agreement.



COLLIERS INTERNATIONAL
833 E Michigan Street, Suite 500
Milwaukee, WI 53202
414 276 9500
www.colliers.com/wisconsin