

BUILDING 1



For Lease Brandon Place

5310 S. Shackleford &
7 Clearwater Dr, Little Rock, AR

DREW HOLBERT, CCIM, SIOR
501 372 6161 | 756
drew.holbert@colliers.com

CASI RUNNELLS, RPA
501 372 6161 | 713
casi.runnells@colliers.com



COLLIERS INTERNATIONAL
1 Allied Dr, Suite 1500
Little Rock, AR 72202
501 372 6161
www.colliers.com/arkansas

KEY FEATURES/HIGHLIGHTS

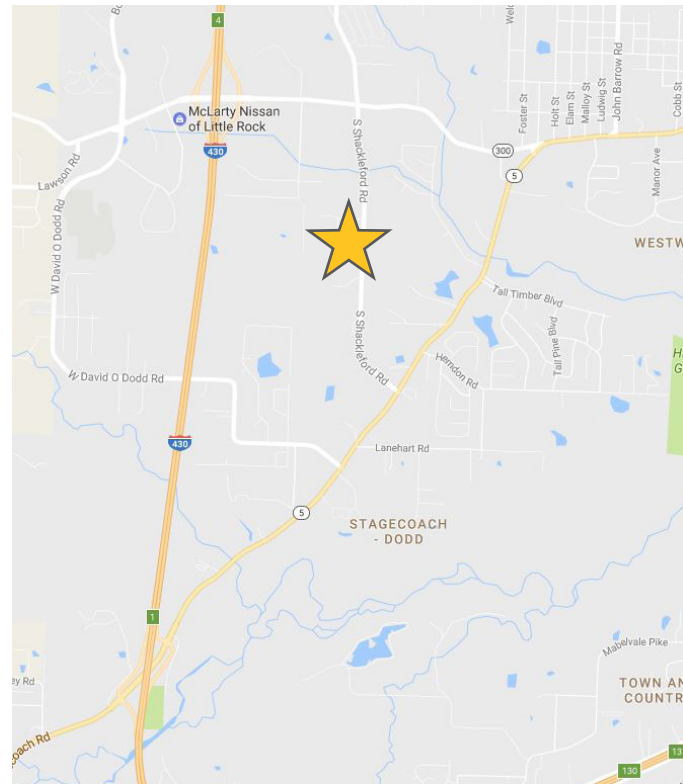
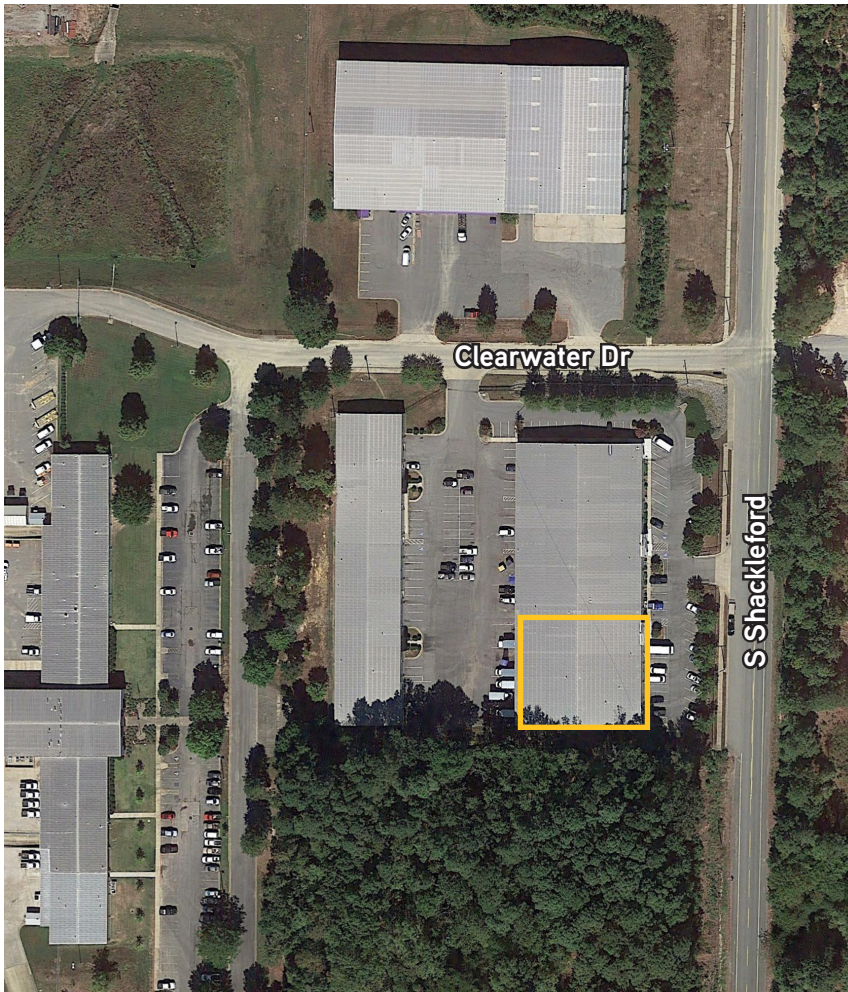
- › Suites C & D: 16,750 SF @ \$5.00/SF
- › Fully fenced truck court with automatic security gate and key card access
- › Upgraded exterior lighting system
- › Clear height of 18'
- › Approximately 1 mile to I-430
- › Zoned "I-1," Industrial Park District
- › The business park sits at the corner of Shackleford Road and Clearwater Drive

FOR LEASE > Warehouse Space

BUILDING 2



AERIAL



CONTACT US

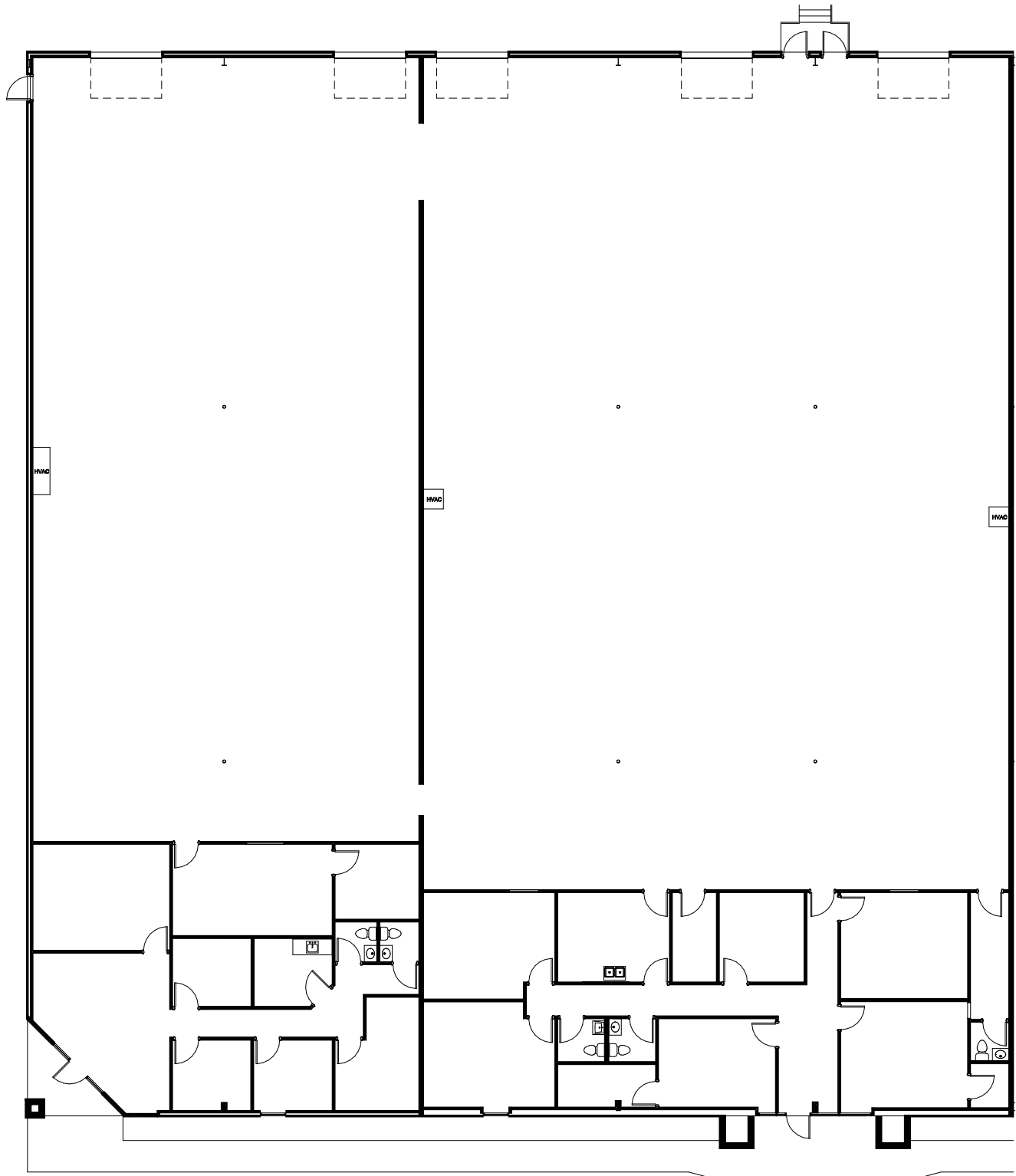
DREW HOLBERT, CCIM, SIOR
501 372 6161 | 756
drew.holbert@colliers.com

CASI RUNNELLS, RPA
501 372 6161 | 713
casi.runnells@colliers.com

This document has been prepared by Colliers International for advertising and general information only. Colliers International makes no guarantees, representations or warranties of any kind, expressed or implied, regarding the information including, but not limited to, warranties of content, accuracy and reliability. Any interested party should undertake their own inquiries as to the accuracy of the information. Colliers International excludes unequivocally all inferred or implied terms, conditions and warranties arising out of this document and excludes all liability for loss and damages arising therefrom. This publication is the copyrighted property of Colliers International and/or its licensor(s). ©2016. All rights reserved.



COLLIERS INTERNATIONAL
1 Allied Dr, Suite 1500
Little Rock, AR 72202
+1 501 372 6161
www.colliers.com/arkansas



SUITE C / D EXISTING FLOOR PLAN

This document/email has been prepared by Colliers International for advertising and general information only. Colliers International makes no guarantees, representations or warranties of any kind, expressed or implied, regarding the information including, but not limited to, warranties of content, accuracy and reliability. Any interested party should undertake their own inquiries as to the accuracy of the information. Colliers International excludes unequivocally all inferred or implied terms, conditions and warranties arising out of this document and excludes all liability for loss and damages arising there from. This publication is the copyrighted property of Colliers International and /or its licensor(s). © 2016. All rights reserved. This communication is not intended to cause or induce breach of an existing listing agreement.

COLLIERS INTERNATIONAL

1 Allied Dr, Suite 1500

Little Rock, AR 72202

+1 501 372 6161

www.colliers.com/arkansas

