



7.5 +/- Acres For Sale

28th Street and I-49, Rogers, AR

RAMSAY BALL
BROKERAGE | ARKANSAS
DIR: 479 845 1502
MOB: 479 640 6405
ramsay.ball@colliers.com



COLLIERS INTERNATIONAL
4204 S Pinnacle Hills Pkwy, Ste 102
Rogers, AR 72758
479 636 9000
www.colliers.com/arkansas

Accelerating success.

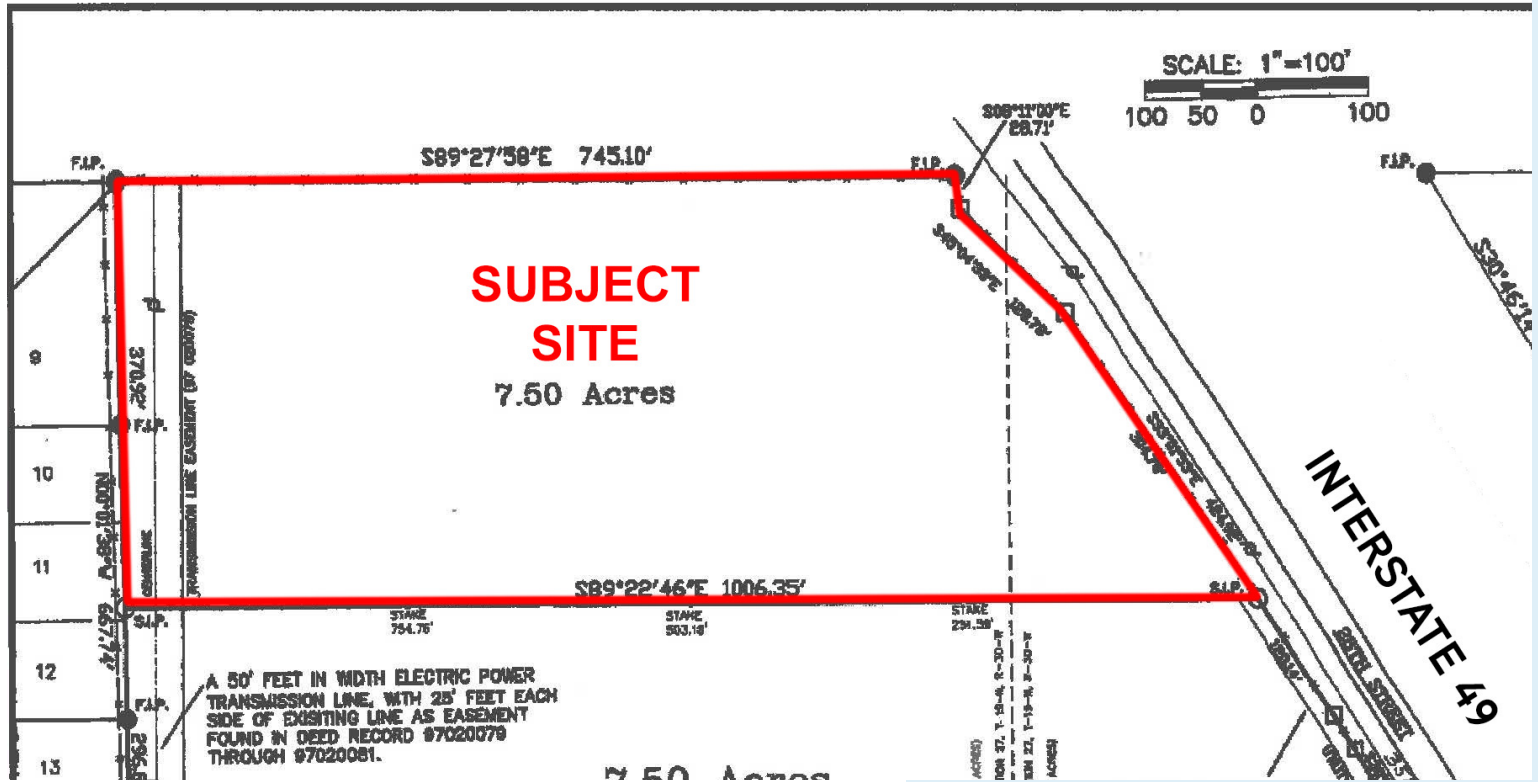
PRICE REDUCED \$150,000

\$1,100,000 - \$3.36 PSF

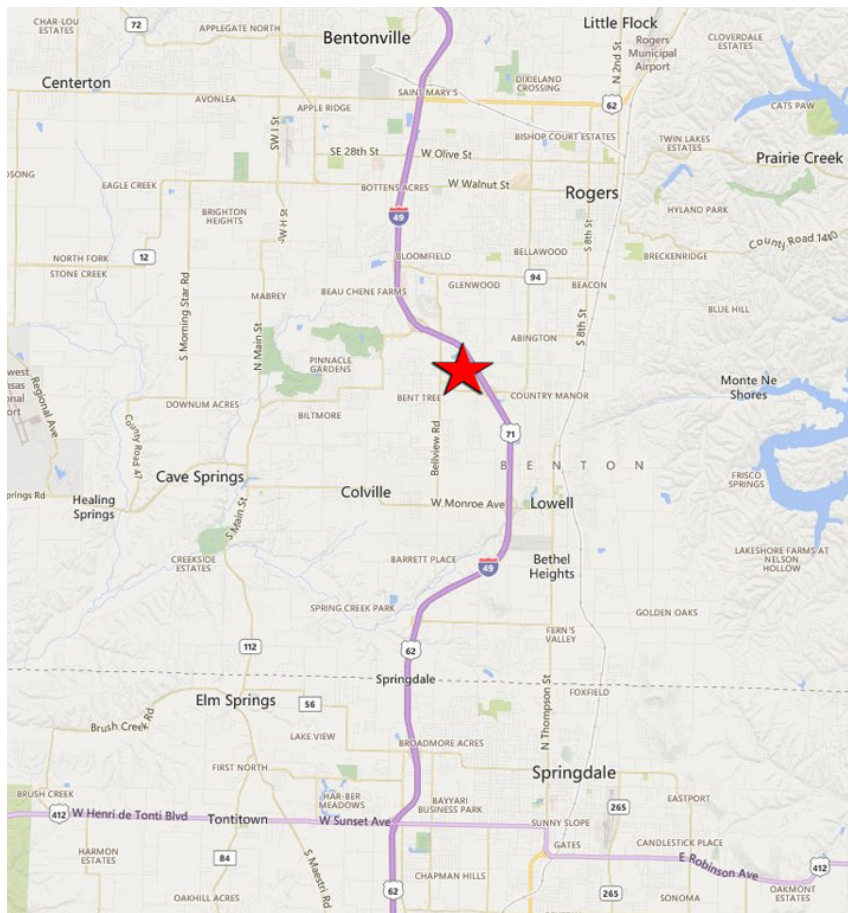
Excellent Price for I-49 Frontage!

- › Excellent visibility from Interstate 49 (71,000 cars per day)
- › Razorback Regional Greenway located at the back of the property
- › Site ready to develop
- › Great location with easy access from Pleasant Grove Road
- › Additional access planned from Pinnacle Hills

SURVEY MAP



MAP



CONTACT US

RAMSAY BALL
BROKERAGE | ARKANSAS
DIR: 479 845 1502
MOB: 479 640 6405
ramsay.ball@colliers.com



COLLIERS INTERNATIONAL
4204 S Pinnacle Hills Pkwy, Ste 102
Rogers, AR 72758
479 636 9000
www.colliers.com/arkansas