

FOR LEASE > OFFICE SPACE

# Forest Park Office Building

31420 NORTHWESTERN HIGHWAY, FARMINGTON HILLS, MICHIGAN



## Building Amenities

- > Suite 100 - 8,604 SF Available
- > Suite 125 - 4,738 SF Available
- > Recently Renovated Common Areas & Building Exterior
- > 72 Surface Parking Spaces & 35 Covered Spaces
- > Window Lined Space with Wooded Views – Adjacent to Covered Parking
- > Park-Like Setting
- > Easy Access to Northwestern Highway and M-10
- > Close Proximity to Hotels, Restaurants & Retail Establishments

**GARY P. GROCHOWSKI, SIOR**  
248 540 1000 | Ext 1856  
gary.grochowski@colliers.com

**BRYAN BARNAS**  
248 540 1000 | Ext 1638  
bryan.barnas@colliers.com

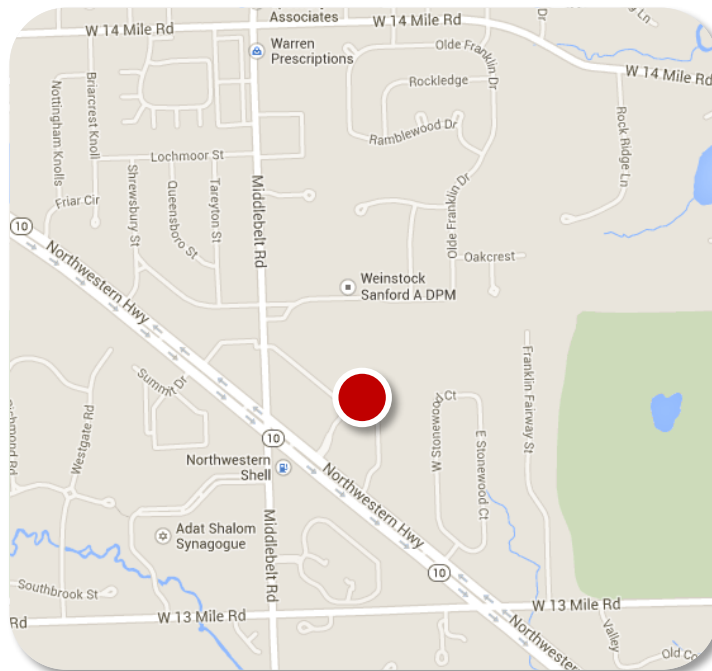
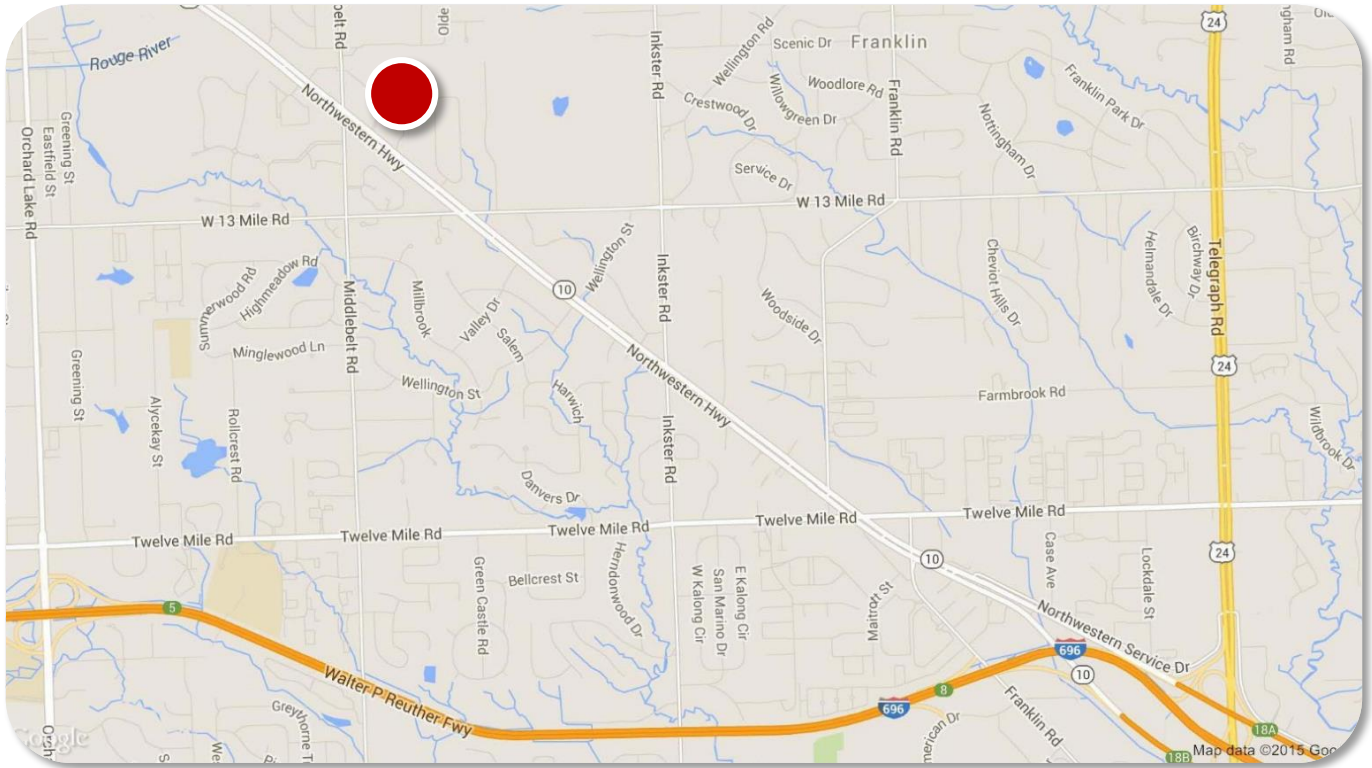
**COLLIERS INTERNATIONAL**  
2 Corporate Drive, Suite 300  
Southfield, MI 48076  
www.colliers.com

FOR LEASE > OFFICE SPACE



# Forest Park Office Building

31420 NORTHWESTERN HIGHWAY, FARMINGTON HILLS, MICHIGAN



**GARY P. GROCHOWSKI, SIOR**  
248 540 1000 | Ext 1856  
gary.grochowski@colliers.com

**BRYAN BARNAS**  
248 540 1000 | Ext 1638  
bryan.barnas@colliers.com

**COLLIERS INTERNATIONAL**  
2 Corporate Drive, Suite 300  
Southfield, MI 48076  
www.colliers.com

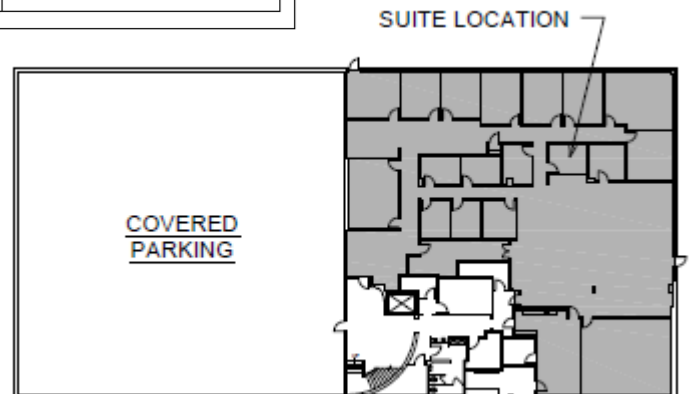
## FOR LEASE > OFFICE SPACE



# Forest Park Office Building

31420 NORTHWESTERN HIGHWAY, FARMINGTON HILLS, MICHIGAN

Suite 100 - 8,604 RSF



**GARY P. GROCHOWSKI, SIOR**  
248 540 1000 | Ext 1856  
gary.grochowski@colliers.com

**BRYAN BARNAS**  
248 540 1000 | Ext 1638  
bryan.barnas@colliers.com

**COLLIERS INTERNATIONAL**  
2 Corporate Drive, Suite 300  
Southfield, MI 48076  
[www.colliers.com](http://www.colliers.com)



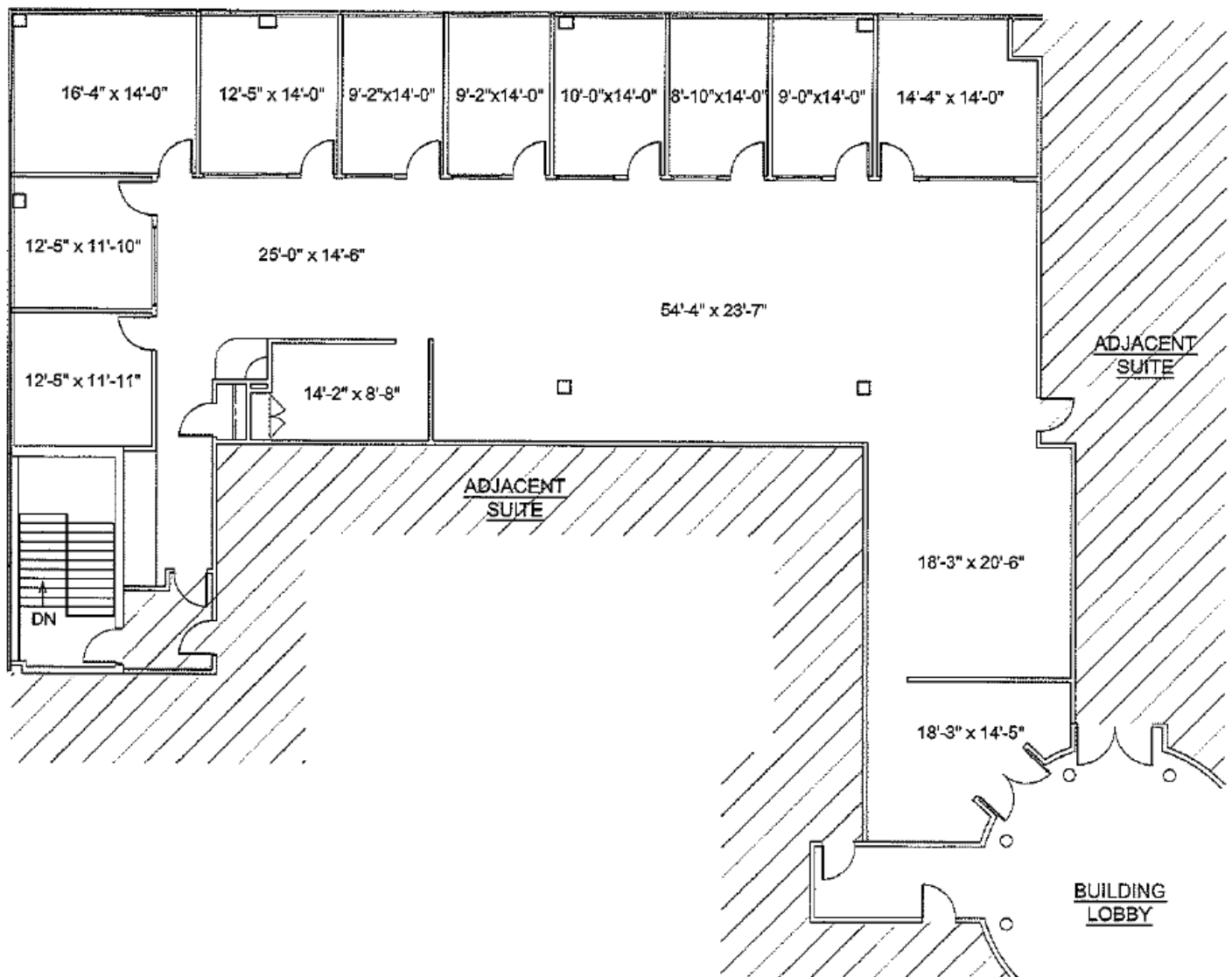
FOR LEASE > OFFICE SPACE



# Forest Park Office Building

31420 NORTHWESTERN HIGHWAY, FARMINGTON HILLS, MICHIGAN

Suite 125 – 4,738 RSF



GARY P. GROCHOWSKI, SIOR  
248 540 1000 | Ext 1856  
gary.grochowski@colliers.com

BRYAN BARNAS  
248 540 1000 | Ext 1638  
bryan.barnas@colliers.com

COLLIERS INTERNATIONAL  
2 Corporate Drive, Suite 300  
Southfield, MI 48076  
www.colliers.com

FOR LEASE > OFFICE SPACE



# Forest Park Office Building

31420 NORTHWESTERN HIGHWAY, FARMINGTON HILLS, MICHIGAN

Suite 100 - 8,604 RSF



**GARY P. GROCHOWSKI, SIOR**  
248 540 1000 | Ext 1856  
[gary.grochowski@colliers.com](mailto:gary.grochowski@colliers.com)

**BRYAN BARNAS**  
248 540 1000 | Ext 1638  
[bryan.barnas@colliers.com](mailto:bryan.barnas@colliers.com)

**COLLIERS INTERNATIONAL**  
2 Corporate Drive, Suite 300  
Southfield, MI 48076  
[www.colliers.com](http://www.colliers.com)



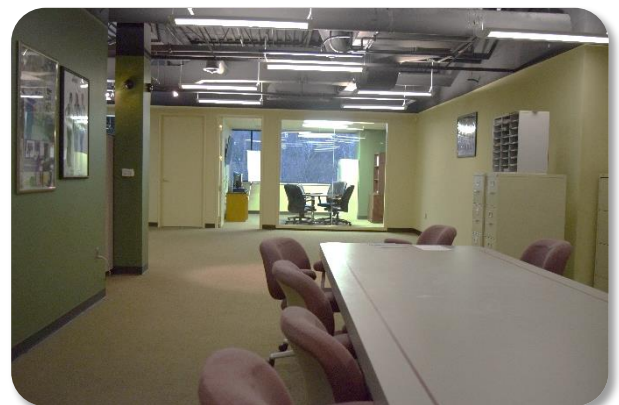
FOR LEASE > OFFICE SPACE



# Forest Park Office Building

31420 NORTHWESTERN HIGHWAY, FARMINGTON HILLS, MICHIGAN

Suite 125 – 4,738 RSF



**GARY P. GROCHOWSKI, SIOR**  
248 540 1000 | Ext 1856  
gary.grochowski@colliers.com

**BRYAN BARNAS**  
248 540 1000 | Ext 1638  
bryan.barnas@colliers.com

**COLLIERS INTERNATIONAL**  
2 Corporate Drive, Suite 300  
Southfield, MI 48076  
www.colliers.com

# Office Availability

## For Lease

### Forest Park Office Building

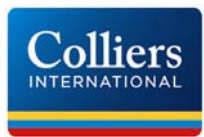
31420 Northwestern Highway

Farmington Hills, MI 48334



**Sale Price:** NFS  
**Lease Rate :** \$14.50 - \$14.50 Gross  
**Gross Sq Ft:** 20,166  
**Vacant Sq Ft:** 13,342  
**Min Available Sq Ft:** 4,000  
**Max Contiguous Sq Ft:** 8,604  
**% Occupied:** 43%  
**Date Built/Rehab:** 1990 / 2011  
**T I Allowance:** TBD  
**Pass Thrus:** Base Year  
**Parking:** 4.82:1,000

#### For more information, contact:



#### Gary P. Grochowski, SIOR

gary.grochowski@colliers.com

#### Bryan Barnas

bryan.barnas@colliers.com

**(248) 540-1000**

2 Corporate Drive  
Suite 300  
Southfield, MI 48076  
248 540 1000

400 E. Washington St.  
Ann Arbor, MI 48104  
734 994 3100

[www.colliers.com](http://www.colliers.com)

**County:** Oakland

**Crossroads:** Between Middlebelt Road & 13 Mile Road

- Great Space Available in Recently Renovated Office Building
- Suite 100 - 8,604 SF Available
- Suite 125 - 4,738 SF Available
- First Floor Adjacent to Covered Parking
- Available Immediately

**Site Status:** Existing

**Zoning:** BI

**Sub-Type:**

**Floors:** 1

**Basement:** No

**Class:** B

#### Traffic Count:

Northwestern Hwy	54,000
Middlebelt Road	17,000

#### Demographics:

5 Miles

Population: 171,012

DT Population: 117,178

# Households: 73,666

HH Income: \$109,304