

## Single Offices For Lease



**Allison Vance Moore** SIOR

Senior Vice President

+1 785 865 3924

[allison.moore@colliers.com](mailto:allison.moore@colliers.com)



**Jonathan Langford**

Associate

+1 785 865 3562

[jonathan.langford@colliers.com](mailto:jonathan.langford@colliers.com)

3705 Clinton Parkway, Suite 201  
Lawrence, KS 66047

+1 785 865 5100

[colliers.com/lawrence](http://colliers.com/lawrence)

## 840 Delaware Street Lawrence, Kansas

### Located in the bustling East Lawrence Warehouse Arts District

This property, built in 1993 and renovated in 2008, is located at the intersection of 9th and Delaware Streets. The individual office space features a common kitchen with refrigerator, dishwasher, and seating area. The site, zoned IC-UC, offers ample parking and is within walking distance to Bon Bon, Lawrence Beer Company, and The Cider Gallery, to name a few.

# For Lease



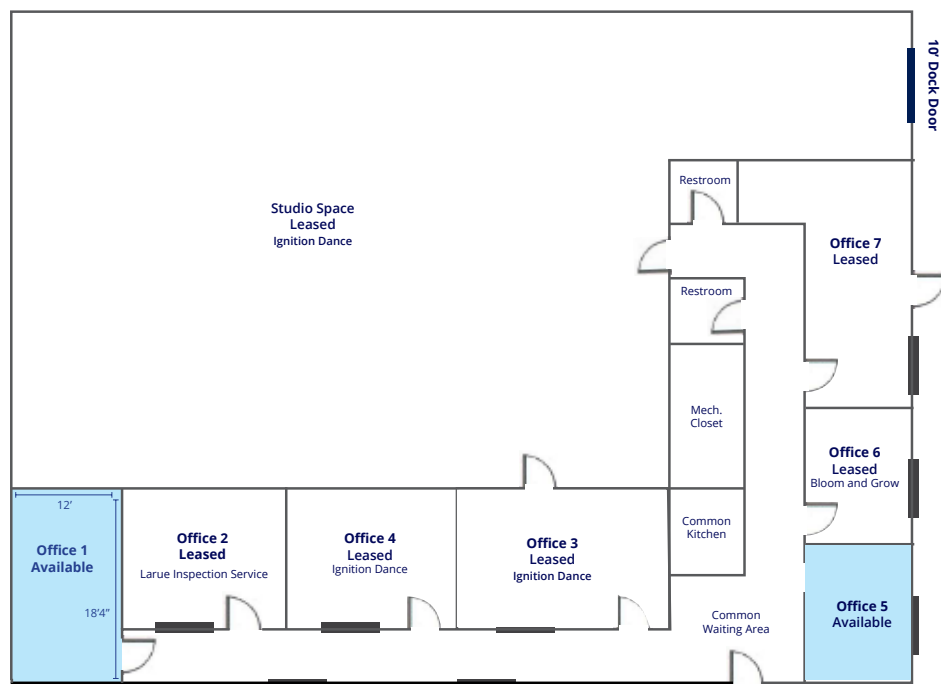
## Available Suites

### Suite 1

- 221 usable SF
- \$700/month, full service

### Suite 5

- 115 usable SF
- \$650/month, full service



**Allison Vance Moore** SIOR  
Senior Vice President  
+1 785 865 3924  
allison.moore@colliers.com

**Jonathan Langford**  
Associate  
+1 785 865 3562  
jonathan.langford@colliers.com

**Colliers Lawrence**  
3705 Clinton Parkway, Suite 201  
Lawrence, KS 66047  
+1 785 865 3562  
colliers.com/lawrence

