

FOR LEASE

# Office & Industrial Space



3501 S. EAST BOULEVARD, VINELAND, NEW JERSEY



## Property Features

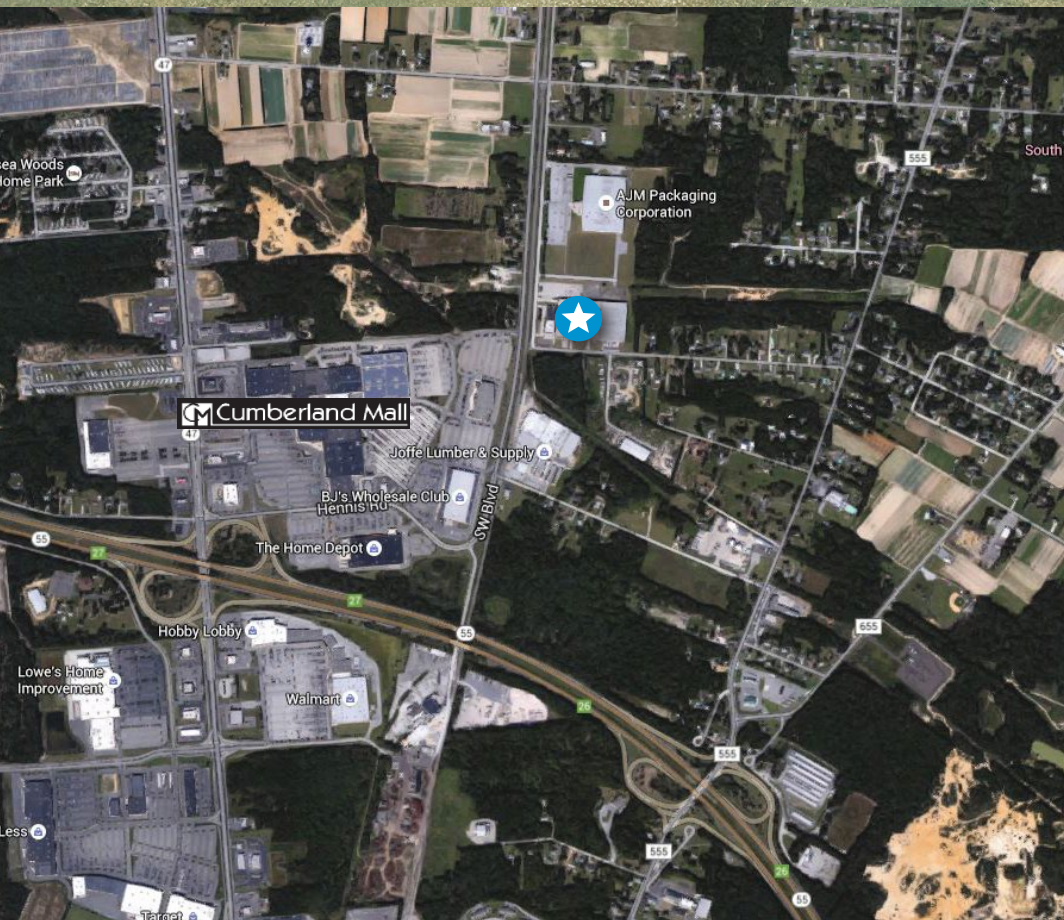
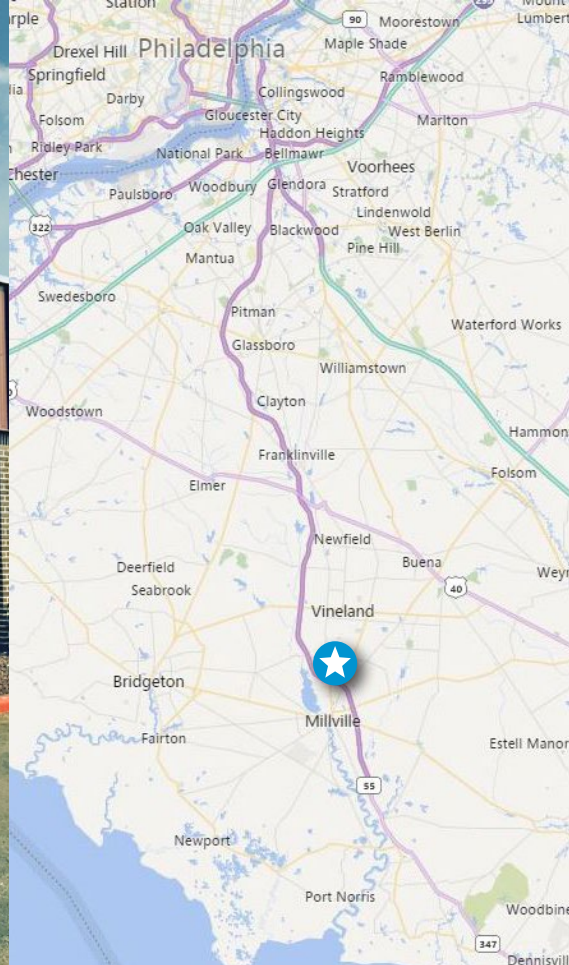
- › 11,863 SF single-story office space
  - Shell condition - as-is or tenant improvement fit-up
- › 16,000 SF industrial space
  - 21' ceiling height
  - 40'x40' column spacing
  - Two tailgate loading doors
- › 3/1,000 parking ratio
- › Located in close proximity to Delsea Drive
- › Positioned behind the Cumberland Mall
- › Easy access to Route 55

## Contact

TONY DIDIO, SIOR  
SENIOR VICE PRESIDENT  
+1 609 820 5900  
[tony.didio@colliers.com](mailto:tony.didio@colliers.com)

**COLLIERS INTERNATIONAL**  
1317 Route 73  
Suite 109  
Mount Laurel, NJ 08054  
+1 856 234 9300  
[www.colliers.com/mountlaurel](http://www.colliers.com/mountlaurel)





## Contact

TONY DIDIO, SIOR  
SENIOR VICE PRESIDENT  
+1 609 820 5900  
[tony.didio@colliers.com](mailto:tony.didio@colliers.com)



COLLIERS INTERNATIONAL  
1317 Route 73  
Suite 109  
Mount Laurel, NJ 08054  
+1 856 234 9300  
[www.colliers.com/mountlaurel](http://www.colliers.com/mountlaurel)



@ColliersSNJ



ColliersSNJ



[colliers.com/mountlaurel](http://colliers.com/mountlaurel)

The foregoing information was furnished to us by sources which we deem to be reliable, but no warranty or representation is made as to the accuracy thereof. Subject to correction of errors, omissions, change of price, prior sale or withdrawal from market without notice. The aerial image is intended to provide a general outline of the subject property. It is not a survey nor should it be relied upon for purposes of determining property lines or boundaries.