

FOR SALE > MEDICAL READY SPACE



2400 POPLAR AVENUE

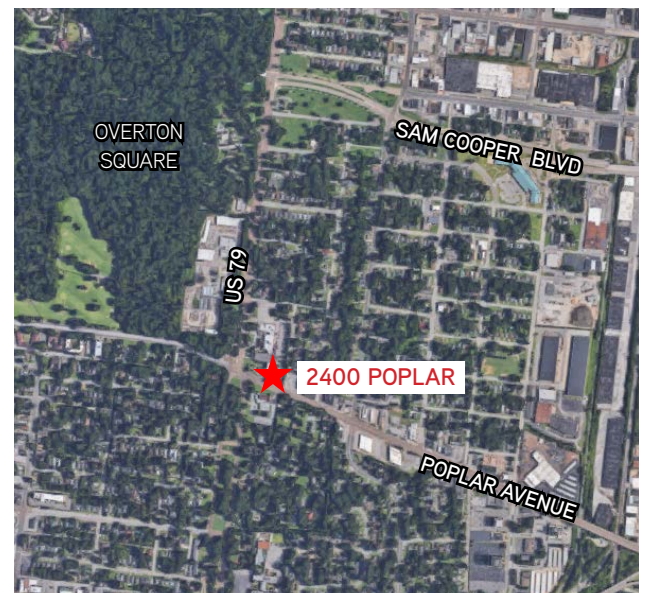
MEMPHIS, TN 38112 - SUITE 501

4,562 SF AVAILABLE



Building Amenities

- > 4,562 SF available - **MEDICAL READY SPACE**
- > Clinical / Medical space that can be subdivided
- > Key card building access
- > Exterior lighting for added security
- > On-site security
- > Two levels of covered parking
- > Monument signage available
- > Easy entrance & exit access
- > Situated on Poplar Avenue in Midtown with easy access to Sam Cooper Boulevard, I-40, I-240, as well as just minutes from downtown and the judicial district



*Located right off of the US 79 and
Poplar Avenue intersection*

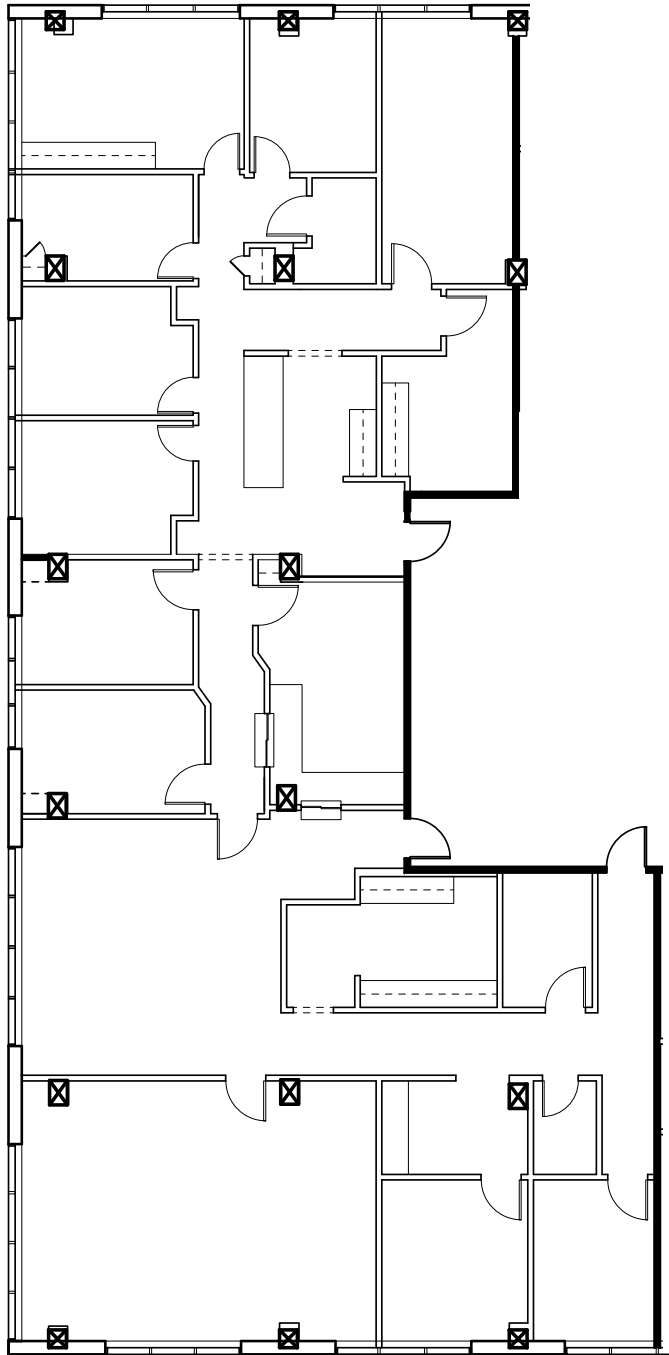
AGENT: RON RILEY
+1 901 312 5787
MEMPHIS, TN
ron.riley@colliers.com

AGENT: LAURA TAYLOR
+1 901 312 5772
MEMPHIS, TN
laura.taylor@colliers.com

COLLIERS INTERNATIONAL
6363 Poplar Avenue, Suite 400
Memphis, TN 38119
www.colliers.com

2400 Poplar Avenue,
Suite 501
4,562 SF Available

Floor Plan



Can be subdivided



Contact Us

AGENT: RON RILEY

+1 901 312 5787

MEMPHIS, TN

ron.riley@colliers.com

AGENT: LAURA TAYLOR

+1 901 312 5772

MEMPHIS, TN

laura.taylor@colliers.com

COLLIERS INTERNATIONAL
6363 Poplar Avenue, Suite 400
Memphis, TN 38119
+1 901 375 4800

www.colliers.com