



Colliers International
1850 Mount Diablo Boulevard, Suite 200
Walnut Creek, CA 94596 | United States
www.colliers.com

LEASING AGENT

Scott Ellis
(925) 279-5575

scott.ellis@colliers.com

Matt Hurd
(925) 279-5567

matt.hurd@colliers.com

Eric Erickson
(925) 279-5580

eric.erickson@colliers.com

**Concord
Gateway I**

1850 Gateway Blvd.
Concord, CA 94520

First Floor

Owned and Managed by

**Sierra Pacific
Properties, Inc.**

Approximate Area Calculations
Subject To Verification:

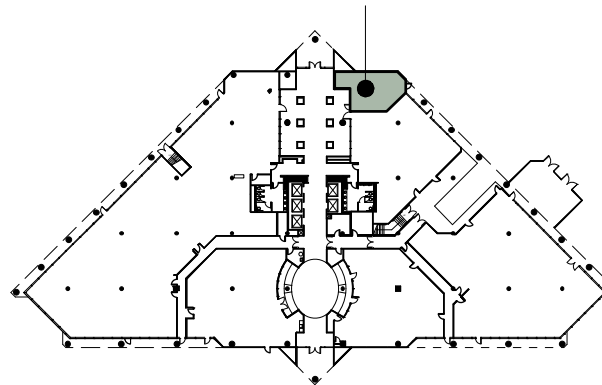
780 rsf

As-built Plan To Be Verified

This information displayed while not guaranteed has
been secured by sources we believe to be reliable.
This information is subject to errors & omissions.
Any tenant should conduct their own investigation.

Plan Revision - 2-5-18

SUITE FLOOR LOCATION



KEY PLAN - FIRST FLOOR

SUITE 150

