

FOR LEASE > RETAIL

Brighton Pointe Retail

3470 BENGAL BOULEVARD SALT LAKE CITY, UT



Property Information

- > 1,800 and 1,077 SF Available
- > Additional square footage options may be available.
- > \$12-\$14 PSF; \$4.07 NNN
- > Smith's Anchored Center
- > Brighton High School Nearby
- > Strong demographics in immediate area
- > Close to Big Cottonwood Canyon

DEMOGRAPHICS	1 MILE	3 MILE	5 MILE
Population			
2017 Estimated	10,364	60,780	177,841
2022 Projected	10,877	63,139	186,027
Households			
2017 Estimated	3,543	20,646	63,447
2022 Projected	3,707	21,418	66,313
Income			
2017 Median HHI	\$100,119	\$92,709	\$78,321
2017 Average HHI	\$131,298	\$125,431	\$106,340
2017 Per Capita	\$45,437	\$43,088	\$38,123

Information provided by ESRI Business Analyst

Heather Bogden
+1 801 947 8357
heather.bogden@colliers.com

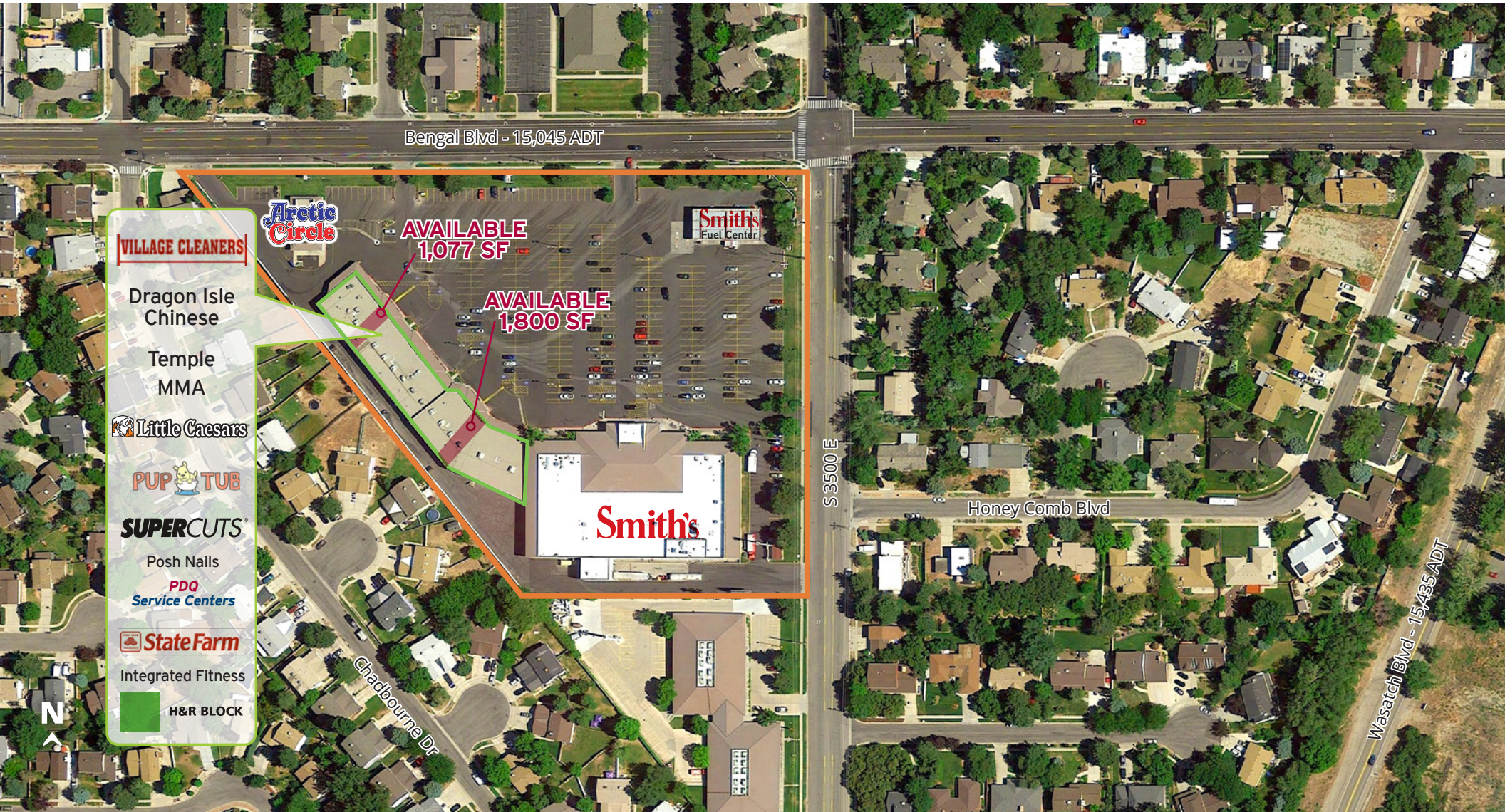
Brady Davies
+1 801 947 8356
brady.davies@colliers.com

Colliers International
6550 S Millrock Dr | Suite 200
Salt Lake City, UT 84121
P: +1 801 947 8300

FOR LEASE > RETAIL

Brighton Pointe Retail

3470 BENGAL BOULEVARD SALT LAKE CITY, UT



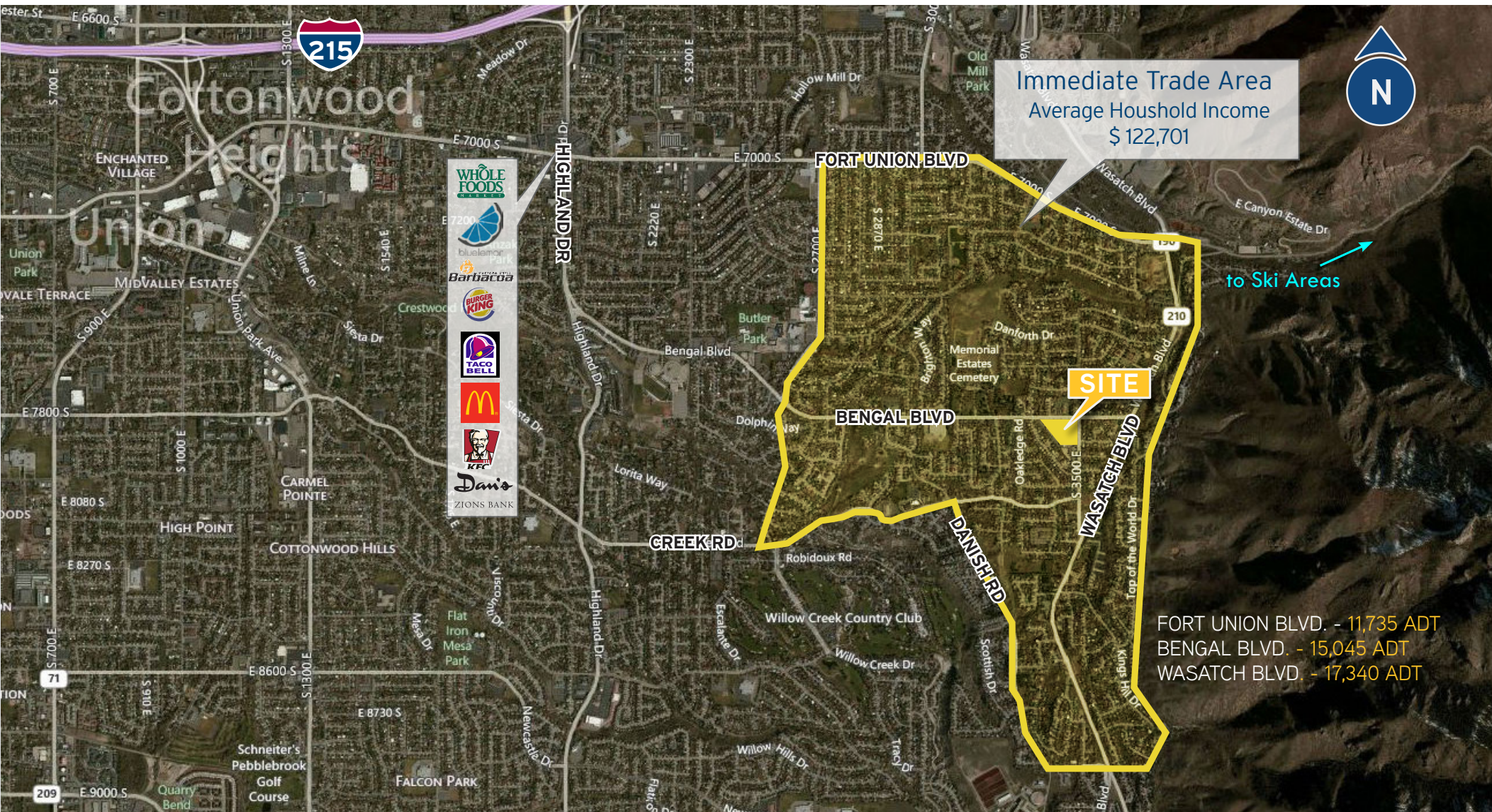
Colliers International
6550 S Millrock Dr | Suite 200
Salt Lake City, UT 84121
P: +1 801 947 8300



FOR LEASE > RETAIL

Brighton Pointe Retail

3470 BENGAL BOULEVARD SALT LAKE CITY, UT



This document has been prepared by Colliers International for advertising and general information only. Colliers International makes no guarantees, representations or warranties of any kind, expressed or implied, regarding the information including, but not limited to, warranties of content, accuracy and reliability. Any interested party should undertake their own inquiries as to the accuracy of the information. Colliers International excludes unequivocally all inferred or implied terms, conditions and warranties arising out of this document and excludes all liability for loss and damages arising there from. This publication is the copyrighted property of Colliers International and/or its licensor(s). ©2017. All rights reserved.

Colliers International
6550 S Millrock Dr | Suite 200
Salt Lake City, UT 84121
P: +1 801 947 8300

