

FOR LEASE > OFFICE SPACE

# Fig Garden Village

680 W. SHAW AVENUE, FRESNO, CALIFORNIA

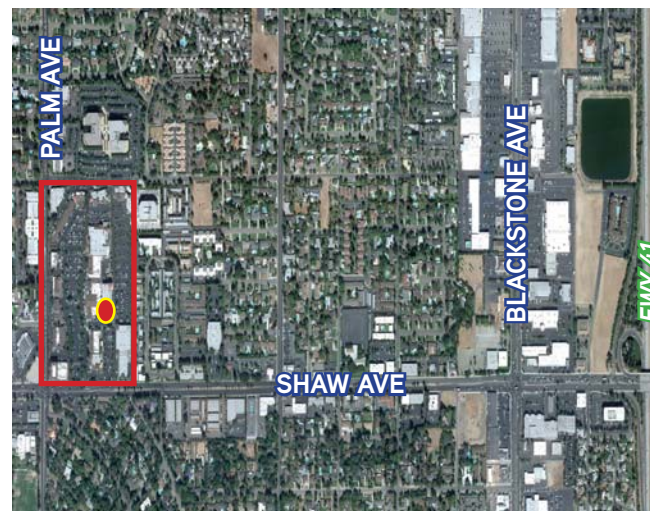


## Property Summary > Class "A" Office Space

Fig Garden Village is Central California's premier lifestyle shopping center featuring national, regional and local retailers. Fig Garden Village consists of 250,000+ square feet of upscale specialty retail and office tenants.

## Building Amenities

- > Available Space: **Suite 205 - 1,153 RSF**      **Suite 208 - 1,523 RSF**
- > Signage available on Building
- > Tenant Improvements: Negotiable
- > Lease Rate: \$2.10 per square foot, plus tenant to pay janitorial service for the leased premises. Leased premises utilities are included.



AGENT: BEAU PLUMLEE  
559 221 1271 | EXT. 443  
FRESNO, CA  
beau.plumlee@colliers.com  
DRE #01269167

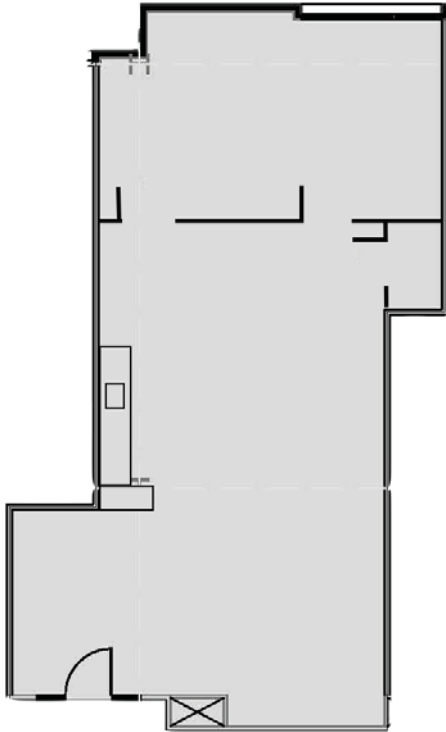
AGENT: SCOTT BUCHANAN  
559 221 1271 | EXT. 430  
FRESNO, CA  
scott.buchanan@colliers.com  
DRE #01389446

COLLIERS INTERNATIONAL  
7485 N. Palm Avenue, #110  
Fresno, CA 93711  
www.colliers.com/fresno

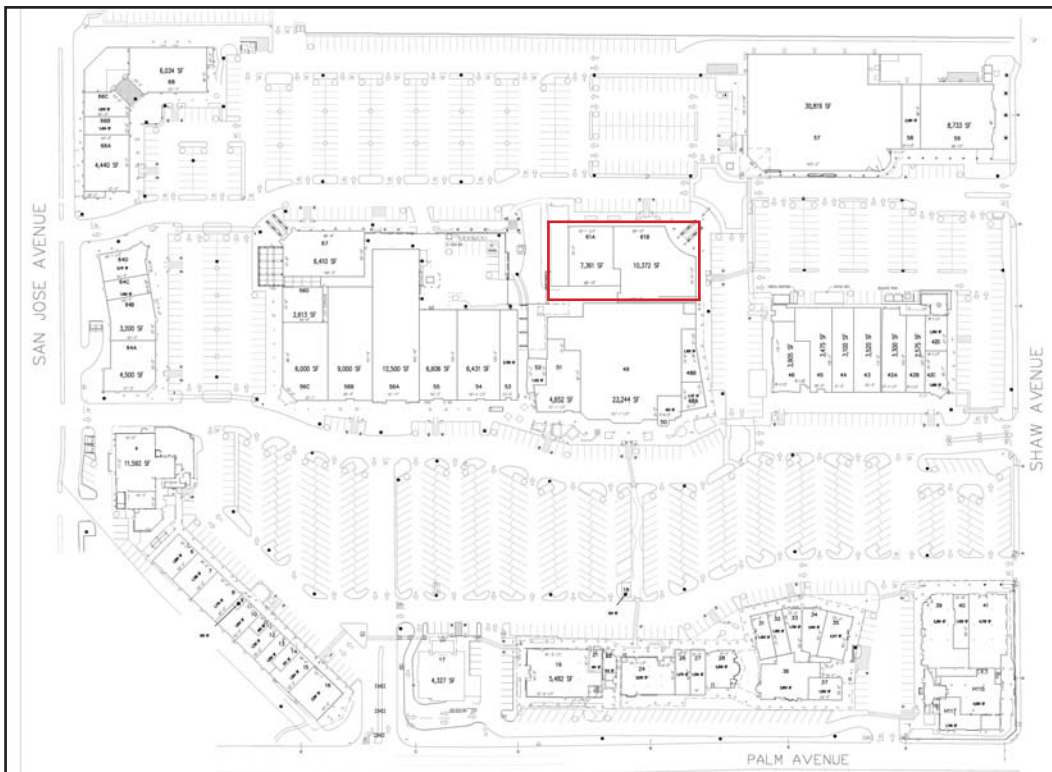
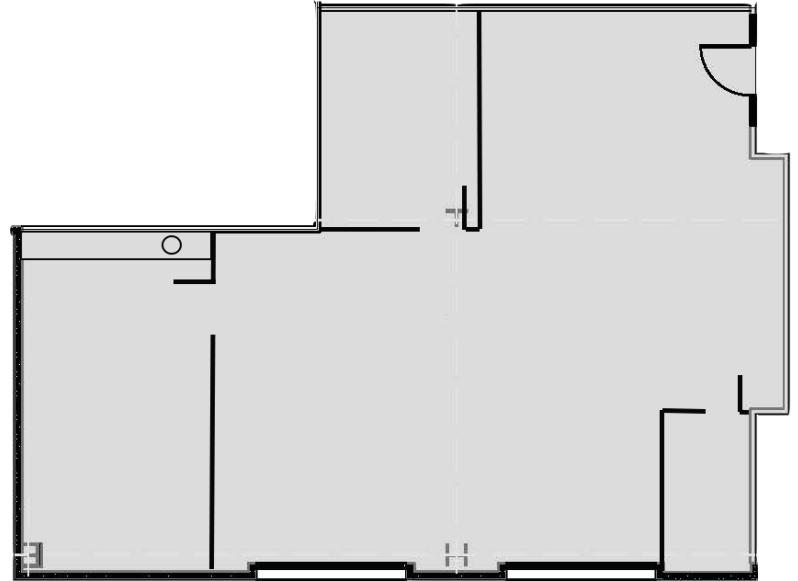
# 680 W. Shaw Avenue, Fresno, California

## FLOOR PLAN / SITE PLAN

*Suite 205 - 1,153 RSF*



*Suite 208 - 1,523 RSF*



## Contact Us

AGENT: BEAU PLUMLEE  
559 221 1271 | EXT. 443  
[beau.plumlee@colliers.com](mailto:beau.plumlee@colliers.com)  
BRE #01269167

AGENT: SCOTT BUCHANAN  
559 221 1271 | EXT. 430  
[scott.buchanan@colliers.com](mailto:scott.buchanan@colliers.com)  
BRE #01389446

COLLIERS INTERNATIONAL  
7485 N. Palm Avenue, #110  
Fresno, CA 93711  
[www.colliers.com/fresno](http://www.colliers.com/fresno)