

The Shoppes at 6001 San Mateo

6001 SAN MATEO BLVD NE, ALBUQUERQUE, NM 87109

Accelerating success.



Details

- > Lease Rate: See Broker
- > NNN: \$3.70
- > Available Space: +/- 978 SF - 3,086 SF
- > Zoning: MX-H

Property Features

- > Excellent NE Heights location in established trade area
- > High exposure on San Mateo Blvd with traffic counts over 32,200 VPD
- > Convenient I-25 access in close proximity
- > 5/1,000 parking ratio

Area Tenants



Contact Us

BEN PERICH
SENIOR ASSOCIATE
+1 505 880 7054
ALBUQUERQUE, NM
LICENSE #45966
ben.perich@colliers.com

BO GALLES
ASSOCIATE BROKER
+1 505 880 7051
ALBUQUERQUE, NM
LICENSE #48318
bo.galles@colliers.com

COLLIERS INTERNATIONAL | NM
MAIN +1 505 883 7676
5051 Journal Center Blvd. NE, Suite 200
Albuquerque, NM 87109
www.colliers.com

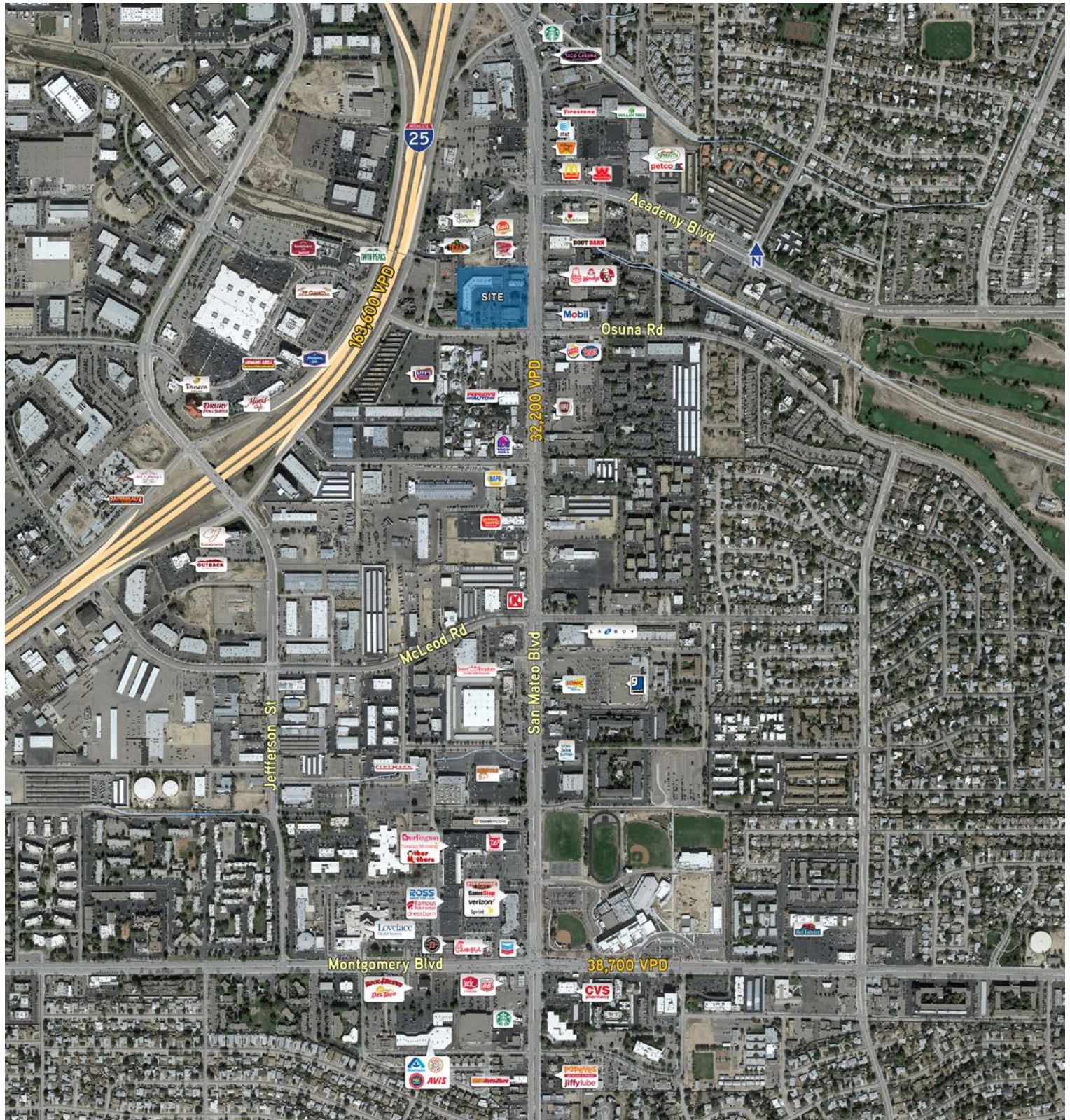
FOR LEASE > RETAIL

Colliers
INTERNATIONAL

Trade Area Aerial

6001 SAN MATEO BLVD NE, ALBUQUERQUE, NM 87109

Accelerating success.



COLLIERS INTERNATIONAL | NM | MAIN +1 505 883 7676 | 5051 Journal Center Blvd. NE, Ste. 200 | Albuquerque, NM 87109 | www.colliers.com

Independently Owned and Operated – The information contained herein was obtained from sources believed reliable; however, Colliers International makes no guarantees, warranties or representations as to the completeness or accuracy thereof. The presentation of this property is submitted subject to errors, omissions, change of price or conditions prior to sale or lease, or withdrawal without notice.

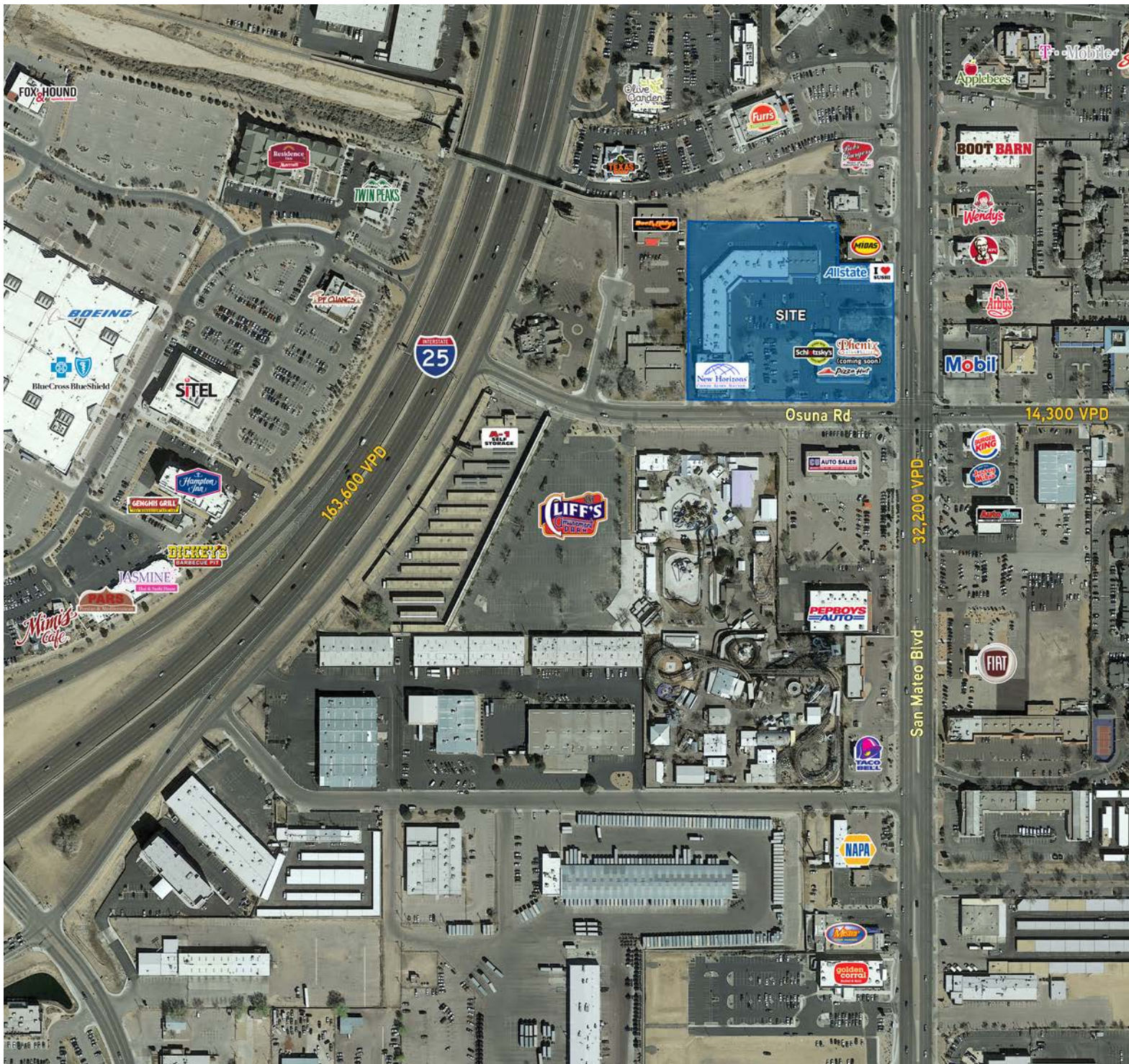
FOR LEASE > RETAIL

Colliers
INTERNATIONAL

Intersection Aerial

6001 SAN MATEO BLVD NE, ALBUQUERQUE, NM 87109

Accelerating success.



COLLIERS INTERNATIONAL | NM | MAIN +1 505 883 7676 | 5051 Journal Center Blvd. NE, Ste. 200 | Albuquerque, NM 87109 | www.colliers.com

Independently Owned and Operated – The information contained herein was obtained from sources believed reliable; however, Colliers International makes no guarantees, warranties or representations as to the completeness or accuracy thereof. The presentation of this property is submitted subject to errors, omissions, change of price or conditions prior to sale or lease, or withdrawal without notice.

FOR LEASE > RETAIL

Colliers
INTERNATIONAL

Property Photos

6001 SAN MATEO BLVD NE, ALBUQUERQUE, NM 87109

Accelerating success.



AVAILABLE



COLLIERS INTERNATIONAL | NM | MAIN +1 505 883 7676 | 5051 Journal Center Blvd. NE, Ste. 200 | Albuquerque, NM 87109 | www.colliers.com

Independently Owned and Operated – The information contained herein was obtained from sources believed reliable; however, Colliers International makes no guarantees, warranties or representations as to the completeness or accuracy thereof. The presentation of this property is submitted subject to errors, omissions, change of price or conditions prior to sale or lease, or withdrawal without notice.

Site Plan

6001 SAN MATEO BLVD NE, ALBUQUERQUE, NM 87109

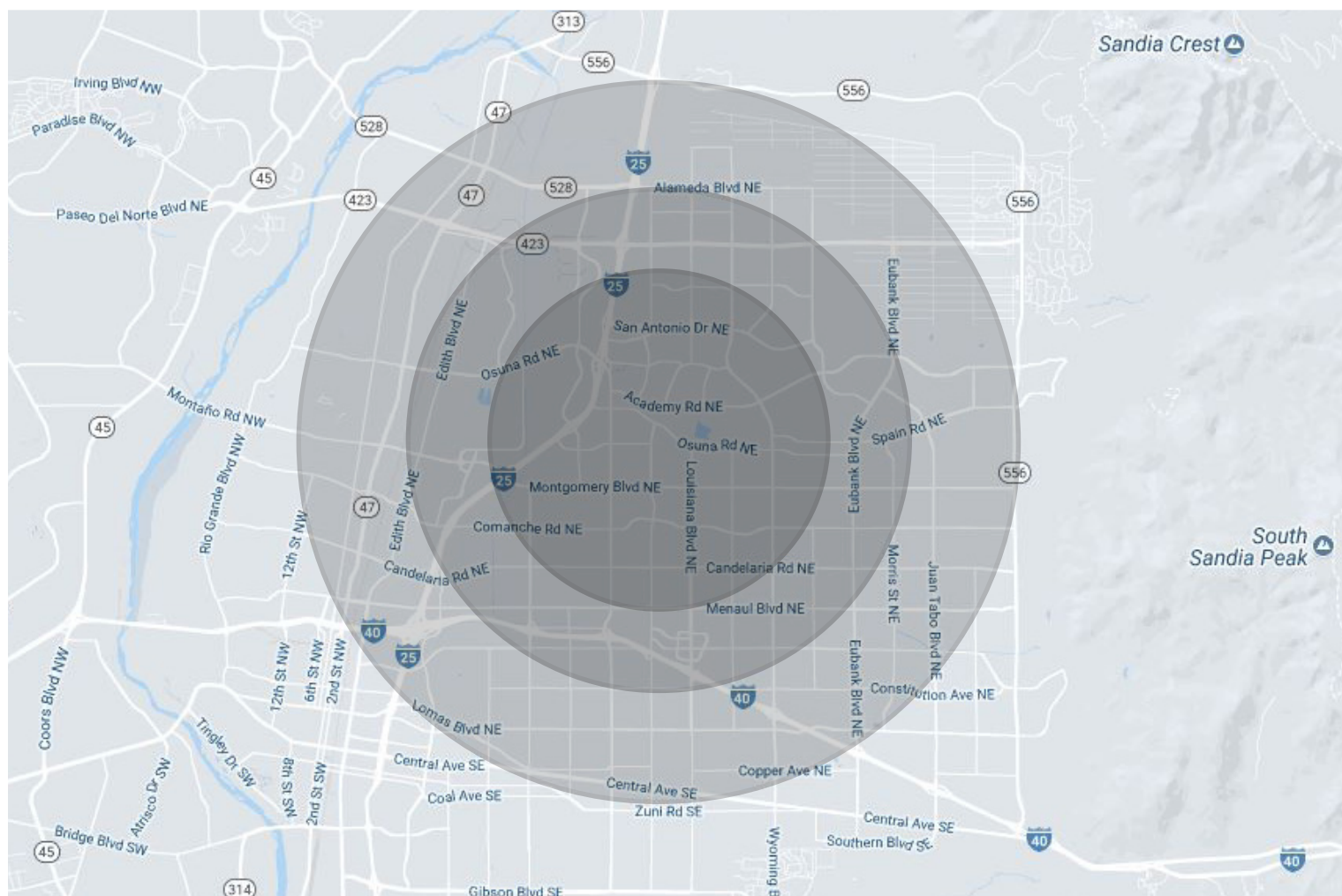
Accelerating success.



Demographics

6001 SAN MATEO BLVD NE, ALBUQUERQUE, NM 87109

Accelerating success.



Demographics

	1-Mile	3-Mile	5-Mile
Total Population	10,755	94,165	249,485
Total Households	5,212	41,373	108,966
Average HH Income	\$48,129	\$64,209	\$69,149
Median HH Income	\$35,628	\$41,373	\$49,242

Contact Us

BEN PERICH
SENIOR ASSOCIATE
+1 505 880 7054
ALBUQUERQUE, NM
LICENSE #45966
ben.perich@colliers.com

BO GALLES
ASSOCIATE BROKER
+1 505 880 7051
ALBUQUERQUE, NM
LICENSE #48318
bo.galles@colliers.com

* Demographic data derived from 2010 US Census

COLLIERS INTERNATIONAL | NM | MAIN +1 505 883 7676 | 5051 Journal Center Blvd. NE, Ste. 200 | Albuquerque, NM 87109 | www.colliers.com