

FOR LEASE

Unitus Plaza

1300 SW 6TH AVENUE PORTLAND, OR 97201



AVAILABLE

Suite 300: 1,992 SF

PROPERTY HIGHLIGHTS

- High ceilings with ample glass
- 4:1,000 onsite parking available
- Excellent CBD location with access to public transportation
- Close proximity to hotels, restaurants, and services
- Large plaza with park setting
- Class A finishes and amenities
- Building storage available
- On-site gym



RATE

\$25.00 / SF / Full Service

JOHN MEDAK
503 542 5898
PORTLAND, OR
john.medak@colliers.com

JENNIFER MEDAK
503 542 5899
PORTLAND, OR
jennifer.medak@colliers.com

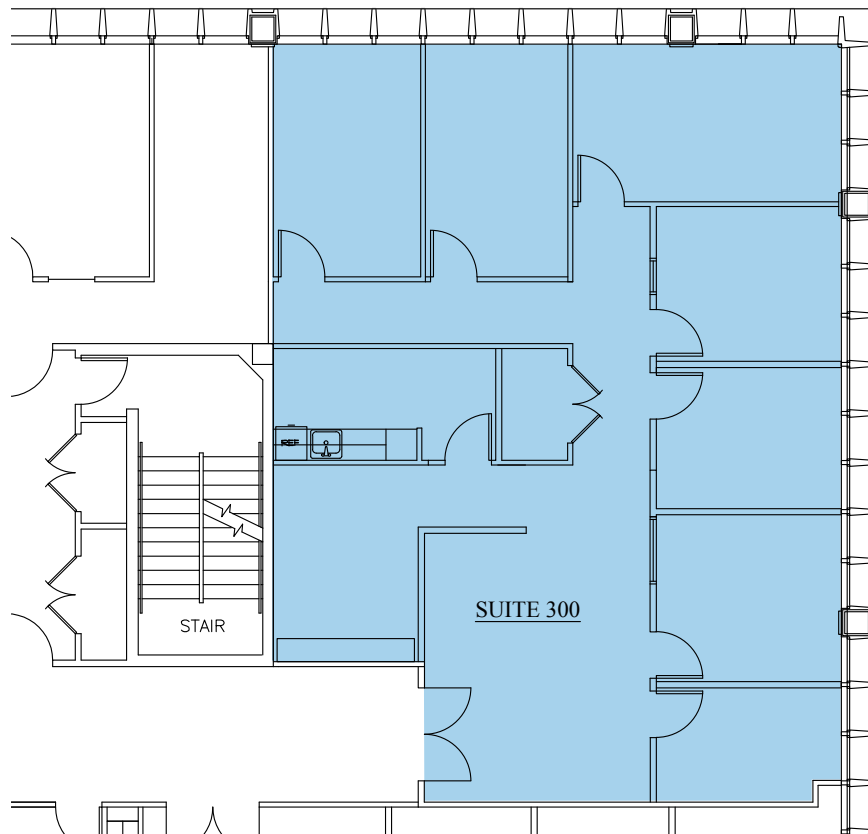
COLLIERS INTERNATIONAL
851 SW Sixth Avenue, Suite 1200
Portland, Oregon 97204
www.colliers.com

FOR LEASE

Unitus Plaza

1300 SW 6TH AVENUE PORTLAND, OR 97201

Suite 300: 1,992 SF



This document has been prepared by Colliers International for advertising and general information only. Colliers International makes no guarantees, representations or warranties of any kind, expressed or implied, regarding the information including, but not limited to, warranties of content, accuracy and reliability. Any interested party should undertake their own inquiries as to the accuracy of the information. Colliers International excludes unequivocally all inferred or implied terms, conditions and warranties arising out of this document and excludes all liability for loss and damages arising there from. This publication is the copyrighted property of Colliers International and/or its licensor(s). ©2016. All rights reserved. 4/8/16

Colliers
INTERNATIONAL