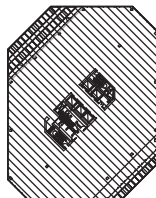
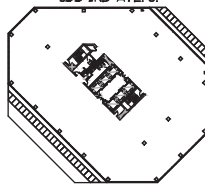


I.C. 9TH FLOOR - SUITE 920

SCALE: 3/32" = 1'-0"

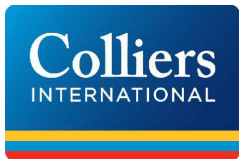
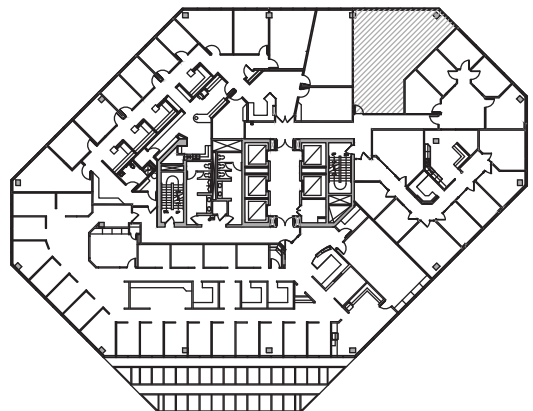
AS-BUILT CONDITIONS for:  
SUITE 920 - 1,163 RSF  
9TH FLOOR - INTERNATIONAL CENTRE

ORACLE CENTRE  
920 2ND AVE. S.



INTERNATIONAL CENTRE  
920 2ND AVE. S.

I.C. 9TH FLOOR: BUILDING KEY



PLAN NORTH



4350 Baker Road ~ Suite 400  
Minnetonka, MN 55343  
952.897.7874 Fax: 952.897.7740

LOCATION:

INTERNATIONAL CENTRE  
FLOOR 9 - SUITE 920  
920 SECOND AVE. SOUTH  
MINNEAPOLIS, MN 55402-3318

SCALE: 3/32" = 1'-0"

JOB: 2012.029.0

REVISION: DATE

△ XXX

FLOOR NO.: (9) OF 17

DRAWN BY: TGW

DATE: 14 JAN. '14

920