

The Meadows

5965 Shiloh Road East, Alpharetta, GA 30005

Located 7.3 miles from The Avalon!

SINGLE-STORY OFFICE SPACE

4,256 SF

UP TO CONTIGUOUS

<u>BAY 5</u>	<u>4,256 SF</u>
OFFICE	3,606 SF
WAREHOUSE	650 SF

<u>BAY 6</u>	<u>4,400 SF</u>
OFFICE	3,200 SF
WAREHOUSE	3,200 SF

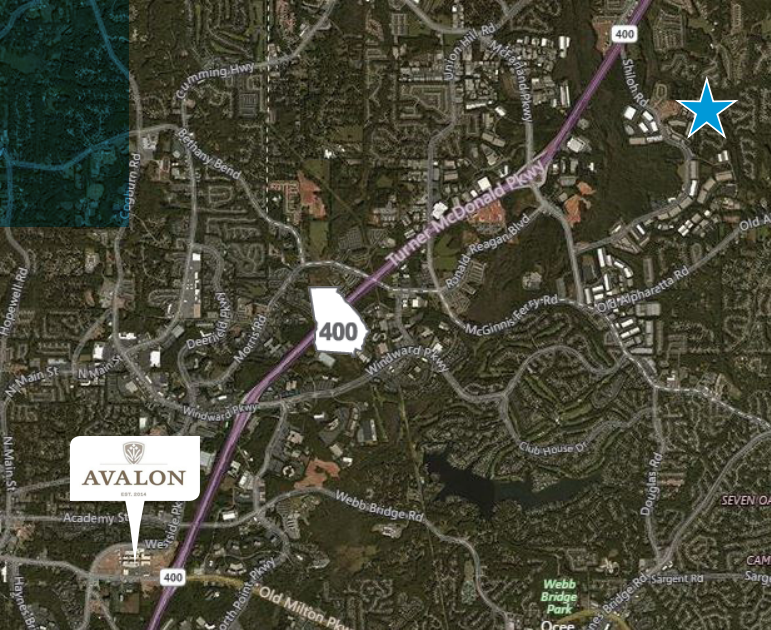
LEASED

FOR LEASE

RICK VAUGHN
+1 404 877 9276
rick.vaughn@colliers.com

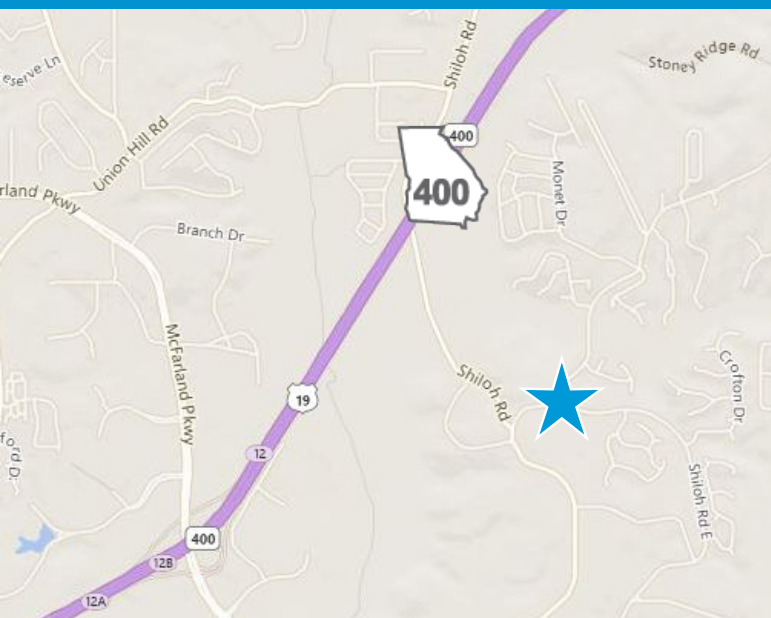
LEASED BY:





IMMEDIATE ACCESS TO:

- GA 400
- Avalon in Alpharetta
- Convenient to Restaurants, Hotels, Banks and



5965 Shiloh Road East, Alpharetta, GA 30005

The Meadows

- 1,200 SF Office
- 3.1 miles from GA 400
- 7.3 miles from Avalon in Alpharetta
- 38,500 SF Industrial Warehouse Building
- Parking 100 Free Surface Spaces (2.67 spaces per 1,000)
- 10 dock high doors and 1 drive-in
- Built in November 1998
- Single Story Office with Curb Side Parking
- Finished Ceiling heights Available in Excess of 20'-21'
- Rental Rate - Negotiable



This document has been prepared by Colliers International for advertising and general information only. Colliers International makes no guarantee, expressed or implied, regarding the information including, but not limited to, warranties of content, accuracy and reliability. Any interested party should undertake their own due diligence. Colliers International excludes unequivocally all inferred or implied terms, conditions and warranties arising out of this document and excludes all liability for damages arising therefrom. This publication is the copyrighted property of Colliers International and/or its licensor(s). ©2012. All rights reserved.

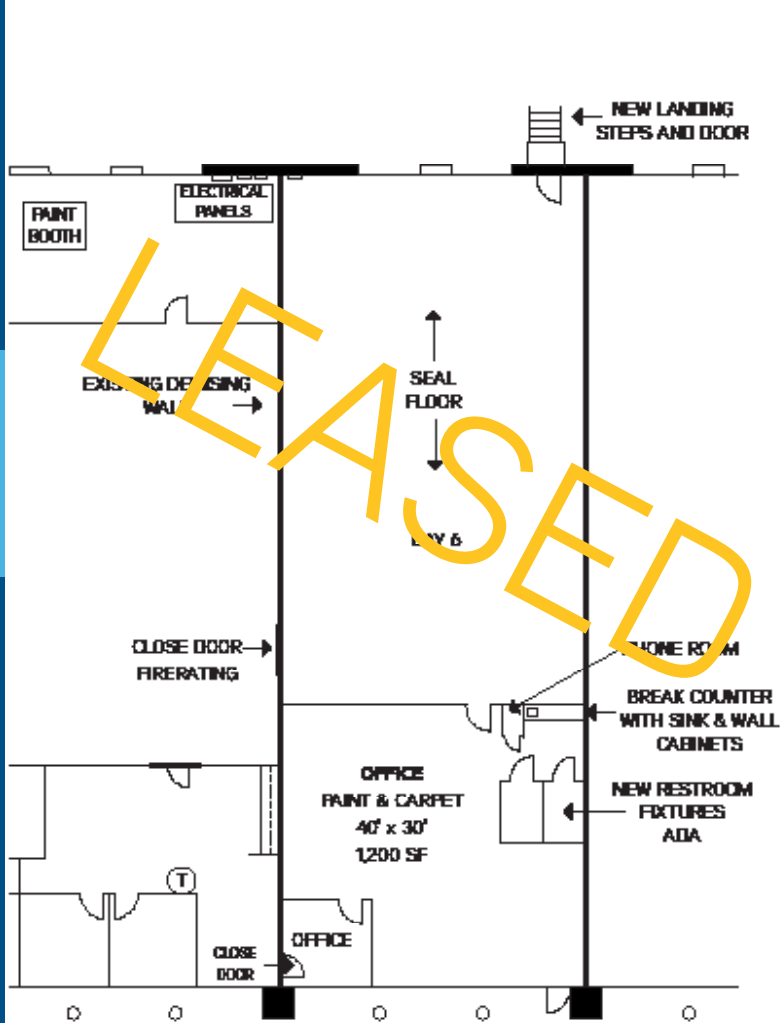
warranties of any kind, expressed or implied, to the accuracy of the information and damages arising therefrom.

The Meadows

5965 Shiloh Road East, Alpharetta, GA 30005

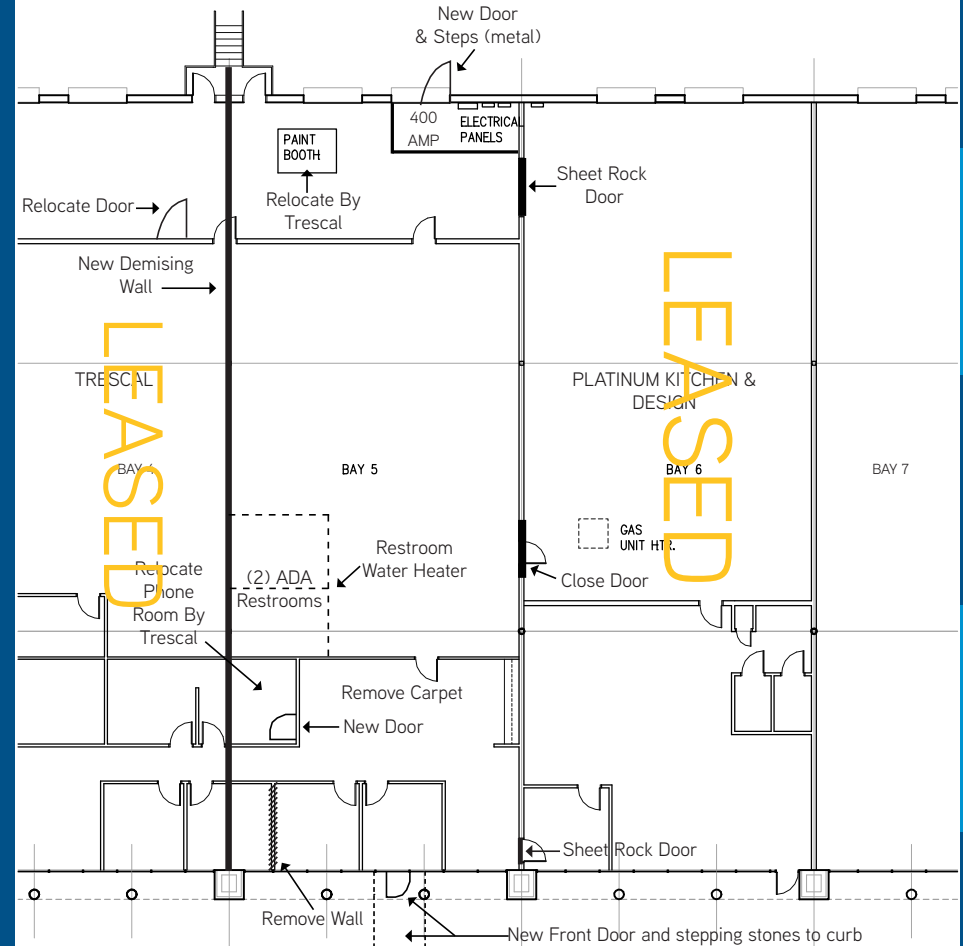
5965 SHILOH ROAD: BAY 6

10/17/2016 | 4,400 SF



BAY 5 RENOVATION - 5965 Shiloh Road

SPRING 2017 | 4,256 SF | 3,600 SF DEMISED OFFICE | 656 SF WAREHOUSE



Notes:

- > Separate gas, water, electric, HVAC and communication so BAY 5 is independent of BAY 4 & 6;
- > Provide Polyethylene sheeting between Bay 4 & 5 to control dust, humidity/temperature during construction;
- > 7 Tons New HVAC; MEP Plans included
- > 400 AMP electrical service for Bay 5
- > Electric Room SF calculation included in Trescal's total SF

0' 5' 10' 20'

BAY 5 AND 6
SUITE A
5965 SHILOH ROAD EAST
ALPHARETTA, GA. 30005
JULY 28, 2016