

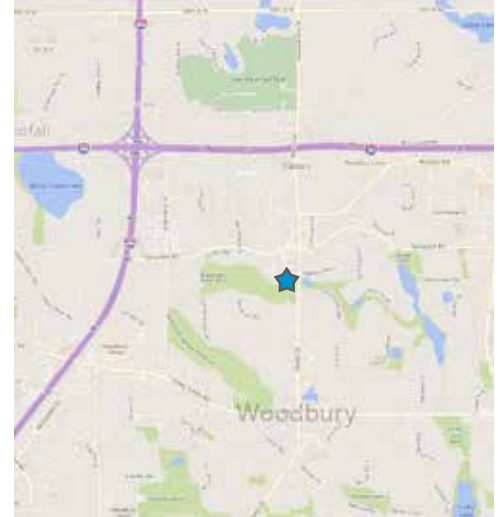
OFFICE SPACE FOR LEASE >

Radio Drive Professional Bldg

1000 Radio Drive | Woodbury, MN 55125



Accelerating success.



BUILDING AMENITIES

- > Excellent visibility off Radio Drive and Seasons Parkway
- > Attractive 25,555 SF building suited for professional office & medical users
- > First floor suite at main entry
- > High traffic area, with easy access to I-94 via Radio Drive
- > Surrounded by retail shops and restaurants
- > Ample surface parking
- > On-building signage available
- > 1,334 SF available
- > \$18.00 PSF net
- > 2018 Real Estate Tax & Ops:
 - \$ 6.05 tax
 - \$ 9.78 ops
 - \$ 15.83 total

CONTACT US

Louis Suarez CCIM, SIOR
952 837 3061
louis.suarez@colliers.com

Brian Bruggeman CCIM, SIOR
952 837 3079
brian.bruggeman@colliers.com

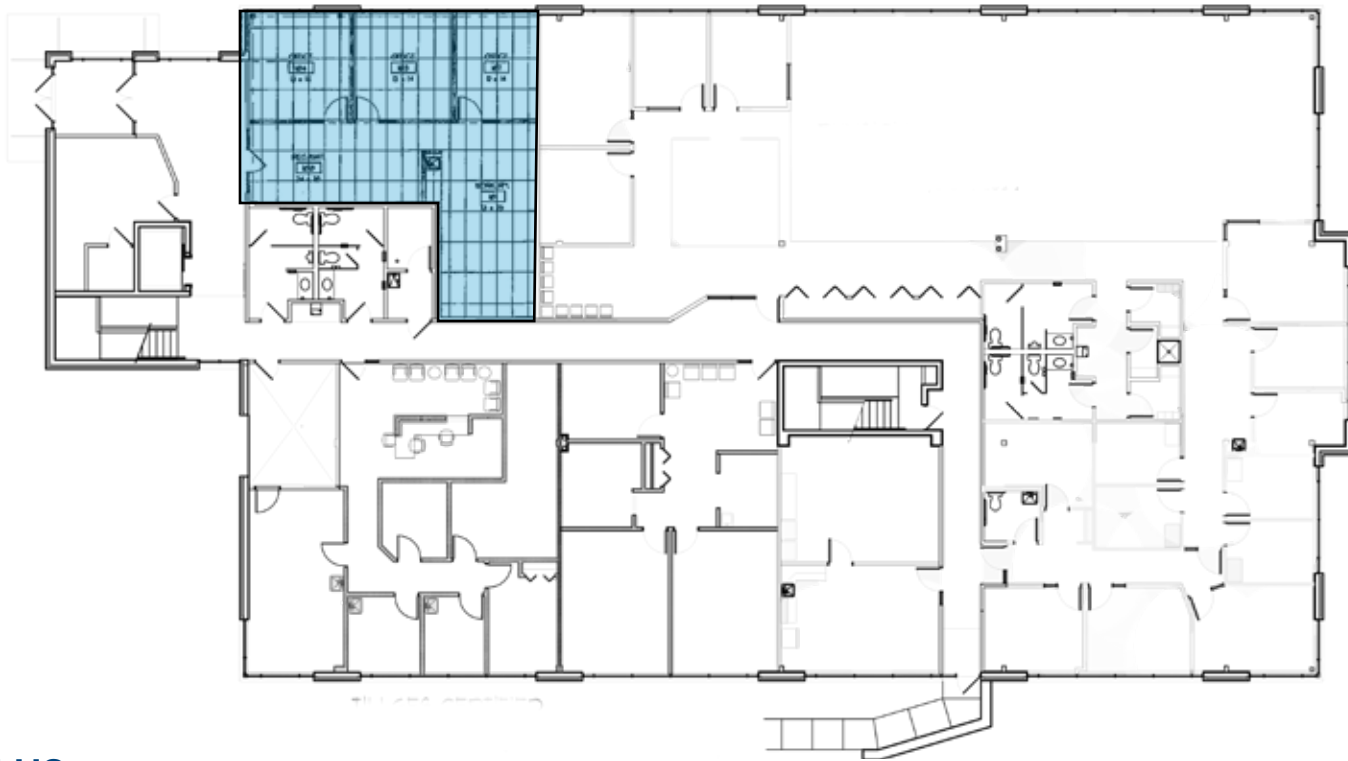
Developed and Managed by



www.mspcommercial.net

1st Floor Plan > 1,334 SF

Radio Drive Professional Building | 1000 Radio Drive | Woodbury, MN 55125



CONTACT US

Louis Suarez CCIM, SIOR
952 837 3061
louis.suarez@colliers.com

Brian Bruggeman CCIM, SIOR
952 837 3061
brian.bruggeman@colliers.com

Woodbury Retail Aerial



CONTACT US

Louis Suarez CCIM, SIOR
952 837 3061
louis.suarez@colliers.com

Brian Bruggeman CCIM, SIOR
952 837 3061
brian.bruggeman@colliers.com