

AVAILABLE FOR LEASE

OFFICE / WAREHOUSE

# NELLIS INDUSTRIAL PARK #2

4401-4415 McGuire Street, North Las Vegas, NV 89081



±9,760 – ±20,061 SF AVAILABLE

**JERRY DOTY, SIOR**  
+1 702 836 3735  
jerry.doty@colliers.com  
License # NV-S.0172045

**MORGAN ELSON**  
+1 702 836 3710  
morgan.elson@colliers.com  
License # NV-S.0184877

**PAUL SWEETLAND, SIOR**  
+1 702 836 3750  
paul.sweetland@colliers.com  
License # NV-S.0043604

**GID**  
INDUSTRIAL

**Colliers**

±9,760 – ±20,061 SF AVAILABLE | FOR LEASE

# NELLIS INDUSTRIAL PARK #2

4401-4415 Mcguire Street, North Las Vegas, NV 89081

GID  
INDUSTRIAL

Colliers

Nellis Industrial Park #2 is part of a ±430,000 SF master planned industrial park located less than 1/4 mile from the Craig Road and I-15 Interchange in North Las Vegas. The property is a rear loaded, concrete tilt-up distribution building totaling ±80,256 SF. The building features evaporative coolers, 3-phase power, high bay lighting, skylights, and fire sprinklers throughout.

## PROPERTY HIGHLIGHTS

- ±9,760 – ±20,061 SF Available
- Dock and Grade Loading
- Evaporative Cooled Warehouse
- Zoned M-2 (City of North Las Vegas)
- Year Built: 1992
- ±24' Clear Height
- Fire Sprinkler System
- 277/480V, 3-Phase Power
- Trailer Parking Available For Lease



**JERRY DOTY, SIOR**  
+1 702 836 3735  
jerry.doty@colliers.com  
License # NV-S.0172045

**MORGAN ELSON**  
+1 702 836 3710  
morgan.elson@colliers.com  
License # NV-S.0184877

**PAUL SWEETLAND, SIOR**  
+1 702 836 3750  
paul.sweetland@colliers.com  
License # NV-S.0043604

The information furnished has been obtained from sources we deem reliable and is submitted subject to errors, omissions and changes. Although Colliers Nevada, LLC has no reason to doubt its accuracy, we do not guarantee it. All information should be verified by the recipient prior to lease, purchase, exchange or execution of legal documents.

±9,760 – ±20,061 SF AVAILABLE | FOR LEASE

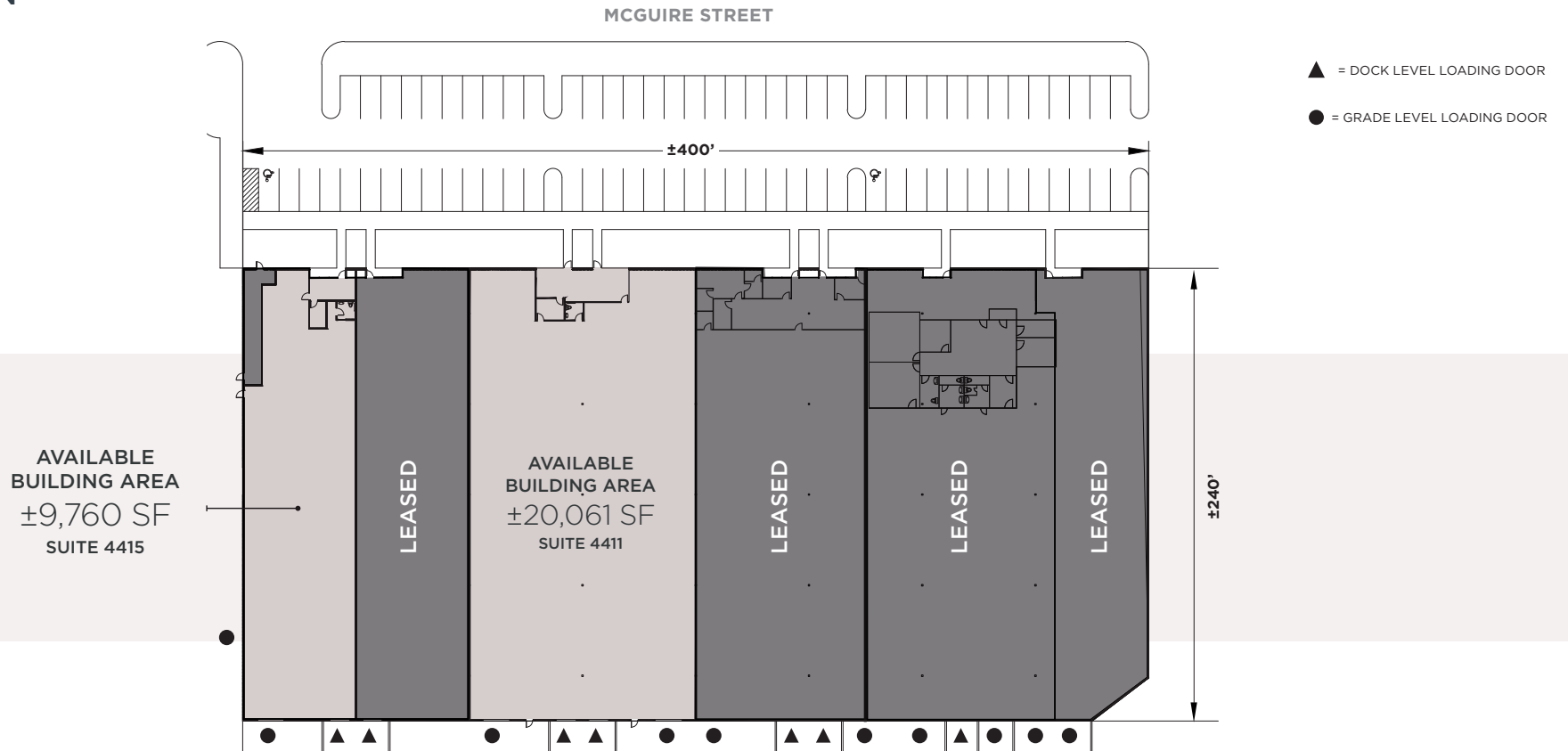
# NELLIS INDUSTRIAL PARK #2

4401-4415 Mcguire Street, North Las Vegas, NV 89081



## SITE PLAN

For Illustration Purposes Only. Not To Scale.



Building	Total SF	Office SF	Warehouse SF	Dock High Loading	Grade Level Loading	Lease Rate (NNN)	NNN Fees	Available
Suite 4411	±20,061 SF	±812 SF	±19,249 SF	Two (2) ±8' x ±9'	Two (2) ±12' x ±14'	Negotiable	\$0.14 PSF	Now
Suite 4415	±9,760 SF	±488 SF	±9,272 SF	One (1) ±8' x ±9'	Two (2) ±12' x ±14'	Negotiable	\$0.14 PSF	Now

±9,760 – ±20,061 SF AVAILABLE | FOR LEASE

# NELLIS INDUSTRIAL PARK #2

4401-4415 Mcguire Street, North Las Vegas, NV 89081

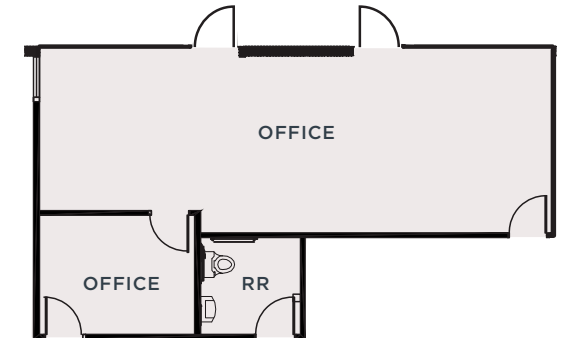


## SUITE 4411

- ±20,061 Total SF
- ±812 SF Office
- ±19,249 SF Warehouse
- Two (2) ±8' x ±9' Dock High Loading Doors
- Two (2) ±12' x ±14' Grade Level Loading Doors
- ±225 Amps, 277/480V, 3-Phase Power
- Available Now

**LEASE RATE: NEGOTIABLE**

**NNN Fees: \$0.14 PSF**



For Illustration Purposes Only. Not To Scale.

▲ = DOCK LEVEL LOADING DOOR    ● = GRADE LEVEL LOADING DOOR

**JERRY DOTY, SIOR**  
+1 702 836 3735  
jerry.doty@colliers.com  
License # NV-S.0172045

**MORGAN ELSON**  
+1 702 836 3710  
morgan.elson@colliers.com  
License # NV-S.0184877

**PAUL SWEETLAND, SIOR**  
+1 702 836 3750  
paul.sweetland@colliers.com  
License # NV-S.0043604

The information furnished has been obtained from sources we deem reliable and is submitted subject to errors, omissions and changes. Although Colliers Nevada, LLC has no reason to doubt its accuracy, we do not guarantee it. All information should be verified by the recipient prior to lease, purchase, exchange or execution of legal documents.

±9,760 – ±20,061 SF AVAILABLE | FOR LEASE

# NELLIS INDUSTRIAL PARK #2

4401-4415 Mcguire Street, North Las Vegas, NV 89081

GID  
INDUSTRIAL



## SUITE 4415

- ±9,760 Total SF
- ±488 SF Office
- ±9,272 SF Warehouse
- One (1) ±8' x ±9' Dock High Loading Door
- Two (2) ±12' x ±14' Grade Level Loading Doors
- ±225 Amps, 277/480V, 3-Phase Power
- Available Now

**LEASE RATE: NEGOTIABLE**

**NNN Fees: \$0.14 PSF**

▲ = DOCK LEVEL LOADING DOOR ● = GRADE LEVEL LOADING DOOR ▼ = GRADE LEVEL LOADING DOOR

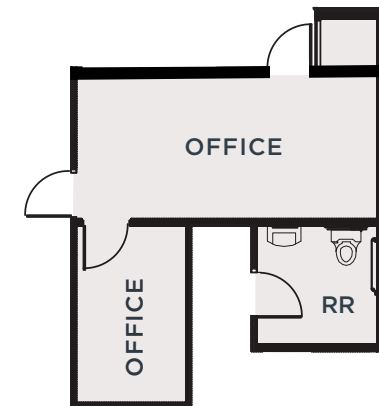
**JERRY DOTY, SIOR**  
+1 702 836 3735  
jerry.doty@colliers.com  
License # NV-S.0172045

**MORGAN ELSON**  
+1 702 836 3710  
morgan.elson@colliers.com  
License # NV-S.0184877

**PAUL SWEETLAND, SIOR**  
+1 702 836 3750  
paul.sweetland@colliers.com  
License # NV-S.0043604



For Illustration Purposes Only. Not To Scale.



The information furnished has been obtained from sources we deem reliable and is submitted subject to errors, omissions and changes. Although Colliers Nevada, LLC has no reason to doubt its accuracy, we do not guarantee it. All information should be verified by the recipient prior to lease, purchase, exchange or execution of legal documents.

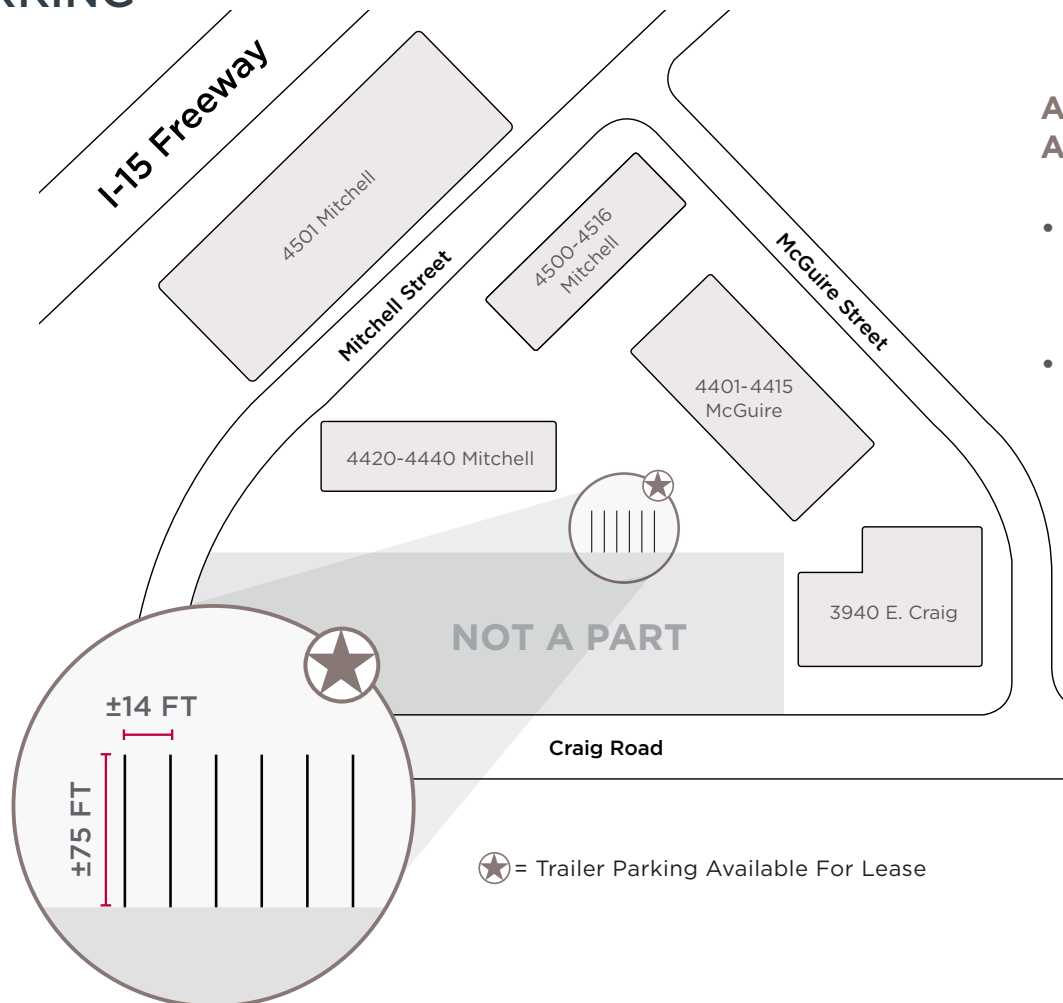
±9,760 – ±20,061 SF AVAILABLE | FOR LEASE

# NELLIS INDUSTRIAL PARK #2

4401-4415 Mcguire Street, North Las Vegas, NV 89081



## TRAILER PARKING



## ADDITIONAL TRAILER PARKING AVAILABLE FOR LEASE

- Up to Five (5) Trailer parking stalls available for lease within Nellis Industrial Park
- Contact Broker for Pricing

For Illustration Purposes Only. Not To Scale.

**JERRY DOTY, SIOR**  
+1 702 836 3735  
jerry.doty@colliers.com  
License # NV-S.0172045

**MORGAN ELSON**  
+1 702 836 3710  
morgan.elson@colliers.com  
License # NV-S.0184877

**PAUL SWEETLAND, SIOR**  
+1 702 836 3750  
paul.sweetland@colliers.com  
License # NV-S.0043604

The information furnished has been obtained from sources we deem reliable and is submitted subject to errors, omissions and changes. Although Colliers Nevada, LLC has no reason to doubt its accuracy, we do not guarantee it. All information should be verified by the recipient prior to lease, purchase, exchange or execution of legal documents.

±9,760 – ±20,061 SF AVAILABLE | FOR LEASE

# NELLIS INDUSTRIAL PARK #2

4401-4415 Mcguire Street, North Las Vegas, NV 89081

GID  
INDUSTRIAL



## AERIAL MAP



**JERRY DOTY, SIOR**  
+1 702 836 3735  
jerry.doty@colliers.com  
License # NV-S.0172045

**MORGAN ELSON**  
+1 702 836 3710  
morgan.elson@colliers.com  
License # NV-S.0184877

**PAUL SWEETLAND, SIOR**  
+1 702 836 3750  
paul.sweetland@colliers.com  
License # NV-S.0043604

The information furnished has been obtained from sources we deem reliable and is submitted subject to errors, omissions and changes. Although Colliers Nevada, LLC has no reason to doubt its accuracy, we do not guarantee it. All information should be verified by the recipient prior to lease, purchase, exchange or execution of legal documents.

## ABOUT GID INDUSTRIAL

GID is a vertically-integrated real estate developer, investor and operator. GID has been active in the industrial sector since 1986, with a focus on targeting light industrial warehouses in U.S. markets with high population density and consumer purchasing power. GID's industrial portfolio comprises over 20 million square feet within the top industrial markets in the United States. Since their formation in 1960, their various businesses have stood on the same, simple principles of quality, service, and integrity. People are the root of GID's success, enabling the firm to deliver quality results to their investment partners.

- Over GID's 60-year history, they have developed, managed, or acquired over 86,000 residential units and 32.5 million square feet of commercial space. These properties consist of a wide spectrum of real estate categories including multifamily rental properties, industrial, for-sale condominiums, retail, office, hotel, and parking uses.
- Divisions within GID specialize in development, acquisitions, real estate funds, portfolio and asset management, and property management.
- Their current initiatives are focused primarily on multifamily, industrial, mixed-use, for-sale condominium, and retail projects.
- GID employs a dedicated team of industrial professionals with an average of 23 years of experience acquiring, developing, and managing industrial properties.
- Since 2006, the investment team has executed over \$5 billion in industrial acquisitions across 70 million square feet.

**JERRY DOTY, SIOR**

+1 702 836 3735  
jerry.doty@colliers.com  
License # NV-S.0172045

**MORGAN ELSON**

+1 702 836 3710  
morgan.elson@colliers.com  
License # NV-S.0184877

**PAUL SWEETLAND, SIOR**

+1 702 836 3750  
paul.sweetland@colliers.com  
License # NV-S.0043604