



Dalfen
INDUSTRIAL



PALMETTO LOGISTICS

8100 Palmetto Commerce Pkwy
Charleston, South Carolina

±1.32-Million-SF Distribution Facility Available for Lease in Charleston, SC

Available Now

Dillon Swayngim, SIOR
Vice President
+1 864 527 5456
dillon.swayngim@colliers.com

Garrett Scott, SIOR
Managing Director
+1 864 527 5453
garrett.scott@colliers.com

John Montgomery, SIOR
Managing Director
+1 864 527 5422
john.montgomery@colliers.com

Brockton Hall, SIOR
Vice President
+1 864 527 5441
brockton.hall@colliers.com

Largest Class A Industrial Facility in Charleston Market

Overview

Building Specs

Port Overview

Location

Development Team

At 1.32 million square feet, Palmetto Logistics is the largest available industrial distribution building in Charleston, SC, as well as the largest speculative build in market history. It is located on Palmetto Commerce Parkway, a prime industrial corridor with convenient proximity to I-26, the Port of Charleston and Charleston International Airport. This highly accessible location ensures smooth supply chain and logistics operations for future tenants.

Most of the Palmetto Commerce Parkway corridor is already developed with 100% of industrial inventory leased, making Palmetto Logistics one of the last infill opportunities in the area. Operating out of Palmetto Logistics will allow end-users to keep drayage costs low and keep freight moving in correlation with the Port of Charleston.



Garrett Scott, SIOR
Managing Director
+1 864 527 5453
garrett.scott@colliers.com

John Montgomery, SIOR
Managing Director
+1 864 527 5422
john.montgomery@colliers.com

Brockton Hall, SIOR
Vice President
+1 864 527 5441
brockton.hall@colliers.com

Dillon Swayngim, SIOR
Vice President
+1 864 527 5456
dillon.swayngim@colliers.com



Enhance your productivity at Palmetto Logistics



South Carolina Ports System

3 Primary Ocean Terminals at Port of Charleston

Close proximity to the Port of Charleston and connections to Inland Ports in Greer and Dillon



Interstate Accessibility

I-26 Connects to Major Population Centers Throughout the Southeast

Site offers tenants direct access to the interstate via the new Weber Blvd interchange currently under development



Cost Effectiveness

Potential Drayage Savings up to 50%

Site offers tenants significant savings on drayage costs:

15-20% less than Summerville

20-30% less than Ridgeville

40-50% less than Orangeburg



*Projects like Palmetto Logistics not only keep South Carolina in the world logistics conversation but provide growth opportunities for companies by enabling them to **keep pace with the e-commerce boom**. This project will **extend the reach of Charleston's global companies via the Port of Charleston**. This dynamic, combined with **workforce development** through partners like Trident Tech and SC Logistics make Charleston an incredible spot for growth and talent.*



- Taylor Jackson

Director of SC Logistics,
South Carolina Council on
Competitiveness

Overview

Building Specs

Port Overview

Location

Development Team



Availability
Now Leasing



Size
1.32M SF



Building

Building size	1,321,840 SF (2,132' x 620')
Office/Restrooms	2,851 SF Office Multiple warehouse restrooms
Building orientation	Cross-dock
Site	±114 AC
Parking	803 car parks
Construction	7" slab on 4" stone grade 9.25" thick tilt-up concrete panels
Clear height	40' 6" clear height
Column spacing	Speed Bays: 54' x 60' Interior Bays: 50' X 54'
Zoning	Light industrial
Municipality	North Charleston, South Carolina

Truck Court

Truck loading dock	185' deep truck courts
Trailer parking	548 trailer parks
Dock doors	248 9' x 10' dock high doors
Pre-installed	54 doors with 40,000lb levelers and Z guards
Drive-in door	Four (4) (12' x 14') drive-in doors

Roofing

60 mil TPO, R-20 and 20 yr. warranty

Walls

Interior walls painted white

Lighting

LED with motion sensors

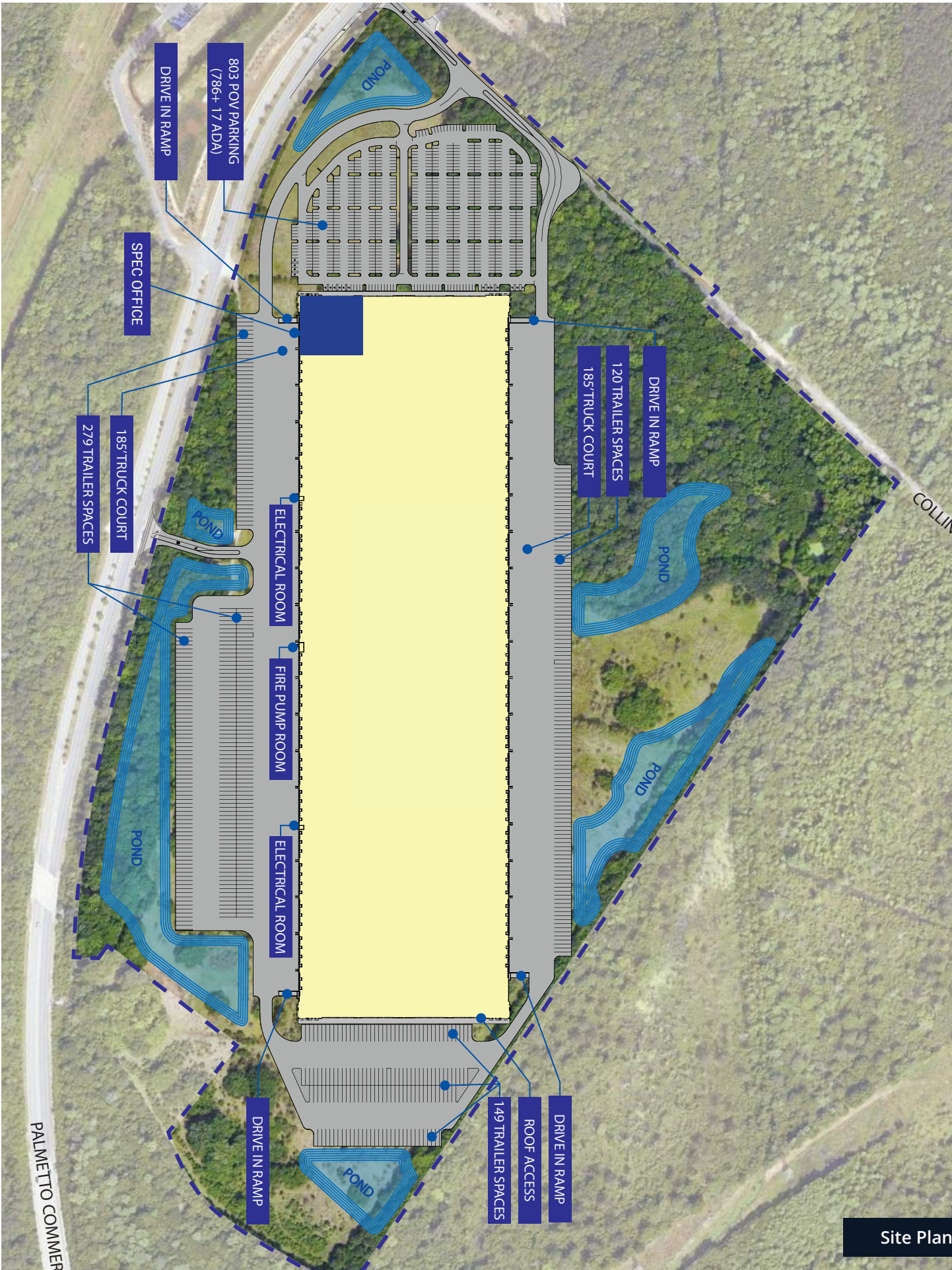
Fire Protection

ESFR sprinkler

Utility Info

Natural Gas

Electrical - Two (2) separate 2500A services
Two (2) 1,500KVA Transformers (Expandable to 12,000A)



PALMETTO COMMERCIAL

COLLINS

Site Plan

Access to the world

South Carolina Ports Authority (SCPA) drives economic growth in South Carolina, serving as a key competitive advantage for the state. Port operations support the state's thriving business community and spur economic development by connecting South Carolina to global markets.

In 2022, SCPA invested significantly in capacity to efficiently handle growing cargo volumes and rising retail imports, ensuring global competitiveness for years to come.

SCPA is considered one of the top 10 ports in the US, and is the fastest growing container port on the East Coast. On average, five vessels sail into the harbor daily carrying \$200 million worth of goods, serving more than 100 ports around the world.

2022 Ports Snapshot



2.8 million TEUs
Volume

The Port of Charleston handled record-breaking volumes in 2022



\$2.6 billion
Investment

SC Ports has invested in recent years to enhance port infrastructure



\$63.4 billion
Economic Impact

The SC Ports has a huge economic impact throughout the state



77%
Growth

SC Ports is forecasting import container volumes to grow 77% over the next 10 years.



52 Feet
Depth

The Charleston Harbor is now the deepest harbor on the East Coast after 2022 expansion



180 Countries
International Reach

More than 20 ocean carriers have vessels that carry cargo between Charleston and 180 countries



#6
U. S. Seaport District

Charleston is in the top 10 U.S. seaport districts by dollar value of goods



110 million
Consumer Reach

Direct rail connection from the Port of Charleston to Inland Port Greer reaches ±110 million consumers within a one-day truck drive.



*The **Charleston region is a talent magnet**, drawing 33 new residents per day. The Palmetto Logistics facility is **a key asset strategically located to capitalize on this rich labor pool** and service key partners like the SC Ports Authority.*



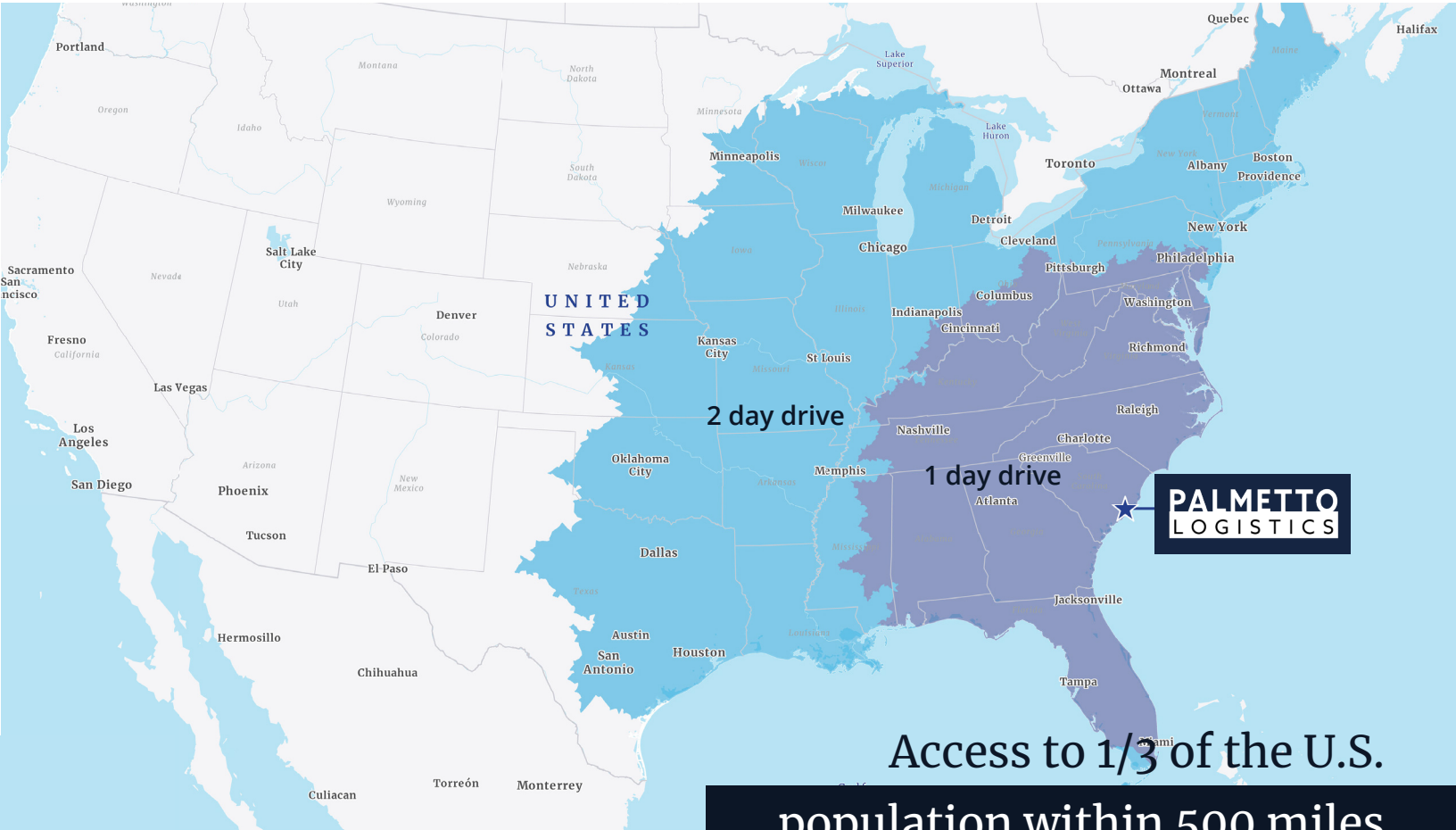
- Mike Graney

Vice President of Global Business Development,
Charleston Regional Development Alliance

Proximity to all SC Port locations



Location	Drive time	Distance
CHS International	17 min	9.2 miles
North CHS Terminal	21 min	11.9 miles
Veterans Terminal	22 min	12.5 miles
Hugh K Leatherman Terminal	22 min	14.4 miles
Wando Welch Terminal	29 min	19.1 miles
Union Pier Terminal	28 min	16.9 miles
Columbus Street Terminal	24 min	15.7 miles



**PALMETTO
LOGISTICS**

Access to 1/3 of the U.S.
population within 500 miles

PALMETTO LOGISTICS

Overview

Building Specs

Port Overview

Location

Development Team

Location is key to success

The Charleston region's commitment to economic development has been rewarded with sustained economic growth. With a fast-growing population, a skilled workforce and efficient access to the global marketplace, Charleston offers the right advantages for business success.

Additionally, the location of Palmetto Logistics benefits from the development of the Palmetto Commerce Parkway Interchange. The goal of this project is to reduce travel times and increase traffic mobility in the area.

3x

Charleston's labor force is growing three times faster than the U.S. average

#1

Charleston ranks number one in manufacturing jobs

33

New residents arrive daily to the greater Charleston area

\$4B

Capital investments in the Charleston market in 2022

New Palmetto Commerce Interchange

completed November '25





Charleston Market Differentiators

Skilled Talent and Workforce

- #2 mid-size U.S. metro for workforce aged 25-34
- 72% of incoming labor have some higher education
- Workforce recruiting and training programs at little or no cost to qualifying companies

Global Access & Infrastructure

- 180+ foreign owned companies in the region
- Port of Charleston offers the deepest harbor in the South Atlantic
- Approximately \$2.6 billion in port and infrastructure improvements
- Nonstop flights to 43 airports in 40 cities

Financing

- Commercial banking
- Business-friendly incentives and tax structure
- Growing venture capital and private equity funds
- Home to World Class Brands



PALMETTO LOGISTICS

8100 Palmetto Commerce Pkwy
Charleston, South Carolina

Leasing Information:



Dalfen
INDUSTRIAL

palmetto-logistics.com

Dillon Swayngim, SIOR
Vice President
+1 864 527 5456
dillon.swayngim@colliers.com

Garrett Scott, SIOR
Managing Director
+1 864 527 5453
garrett.scott@colliers.com

John Montgomery, SIOR
Managing Director
+1 864 527 5422
john.montgomery@colliers.com

Brockton Hall, SIOR
Vice President
+1 864 527 5441
brockton.hall@colliers.com

Copyright © 2025 Colliers International. Information herein has been obtained from sources deemed reliable, however its accuracy cannot be guaranteed. The user is required to conduct their own due diligence and verification.