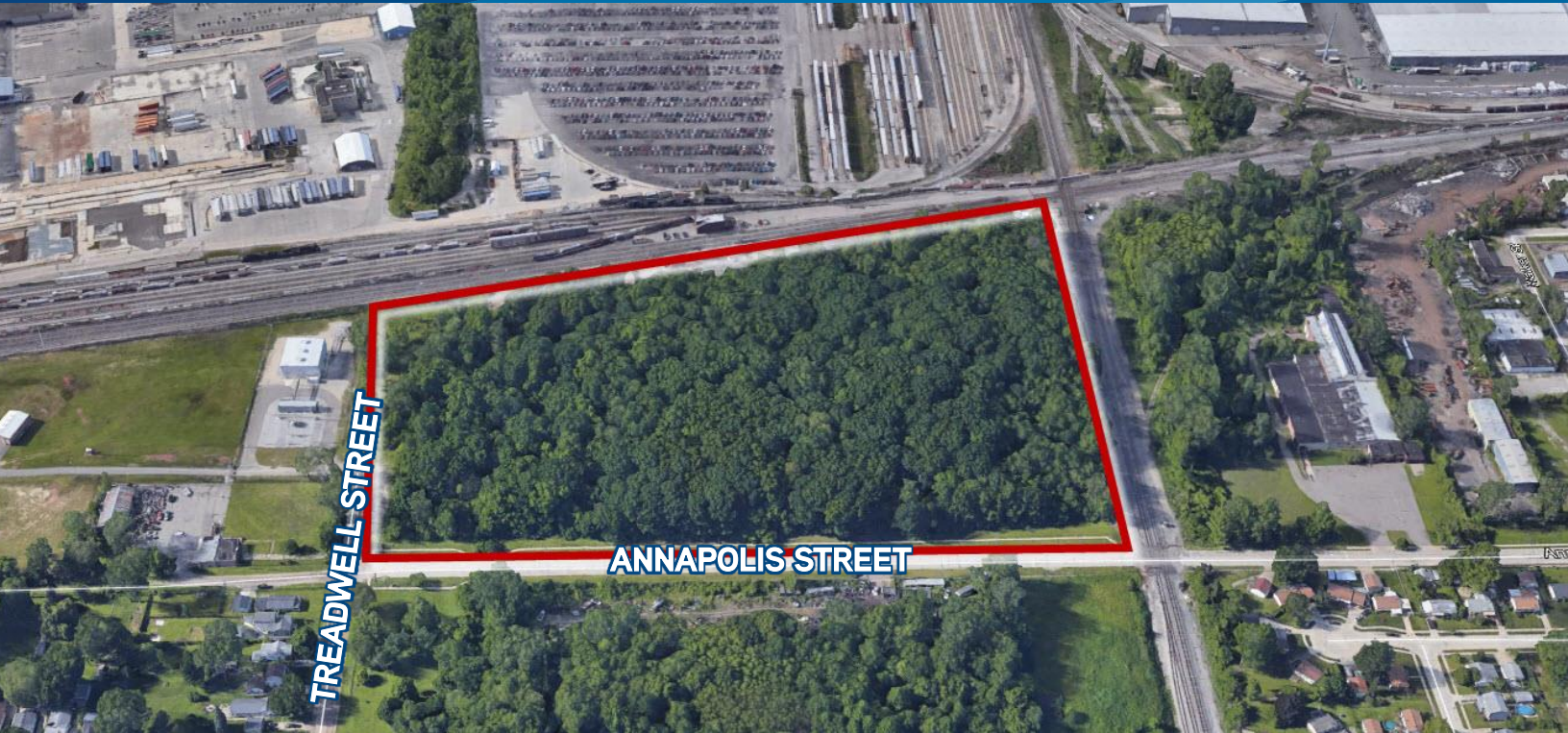


FOR SALE >

# VACANT INDUSTRIAL LAND

ANNAPOLIS STREET & TREADWELL STREET | WAYNE, MICHIGAN



**19.83 ACRE PARCEL - \$400,000.00**

## > PROPERTY HIGHLIGHTS

- Annapolis Road Frontage
- Proximity to Two Railroads and Ford Motor Company's Michigan Assembly Plant
- BRING ALL OFFERS

**COLLIERS INTERNATIONAL**  
2 Corporate Drive | Suite 300  
Southfield, Michigan 48076

## For More Information Call:

**PETER McGRATH**

PHONE 248 540 1000 EXT 1848

EMAIL [peter.mcgrath@colliers.com](mailto:peter.mcgrath@colliers.com)

**GREG BOCKART**

PHONE 248 540 1000 EXT 1874

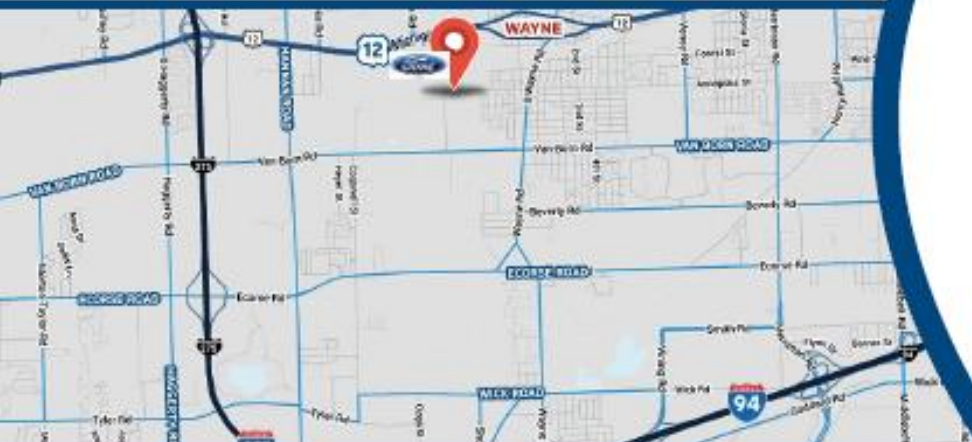
EMAIL [greg.bockart@colliers.com](mailto:greg.bockart@colliers.com)

**JEFFREY D. FENLEY**

PHONE 248 540 1000 EXT 1650

EMAIL [jeffrey.fenley@colliers.com](mailto:jeffrey.fenley@colliers.com)

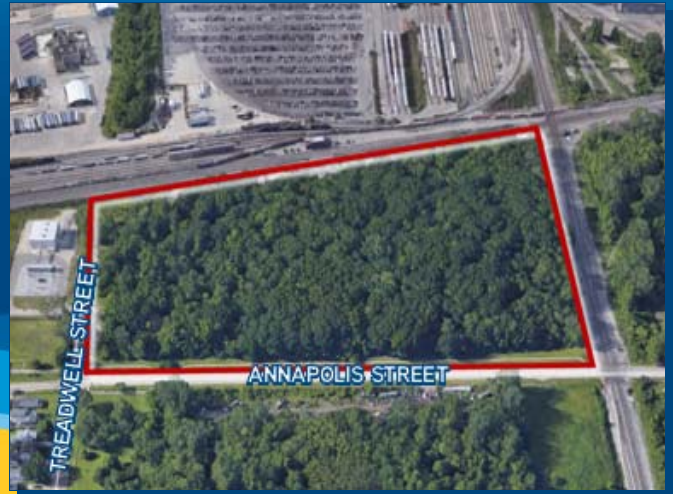
[colliers.com/detroit](http://colliers.com/detroit)



# Vacant Land Availability

## For Sale

Annapolis Street  
Wayne, MI 48184



Sale Price: \$400,000  
Sale Price /Acre: \$20,640  
Sale Price /SF: \$0.46  
Acreage- Max.: 19.83

County: Wayne  
Crossroads: Annapolis Street & Treadwell Street  
Parcel #: 55-014-99-0004-001

19.83 Acre Parcel.  
Annapolis Road Frontage.  
Proximity to Two Railroads and Ford Motor Company's  
Michigan Assembly Plant.

For more information, contact:



**Peter McGrath**

peter.mcgrath@colliers.com

**Greg Bockart**

greg.bockart@colliers.com

**Jeffrey D. Fenley**

jeffrey.fenley@colliers.com

**(248) 540-1000**

2 Corporate Drive, Suite 300  
Southfield, MI 48076  
248 540 1000

400 E. Washington St.  
Ann Arbor, MI 48104  
734 994 3100

[www.colliers.com](http://www.colliers.com)