

FOR LEASE > ±3,881 SQUARE FEET OFFICE/INDUSTRIAL SPACE



# Polvorosa Business Park

2235 POLVOROSA AVENUE & 1555 DOOLITTLE DRIVE | SAN LEANDRO, CA



Polvorosa Business Park is designed for Office, Sales & Service, R&D and light industrial Tenants. It's unparalleled amenities and beautifully landscaped setting provide a professional environment for today's business. Located in San Leandro with immediate access to Interstate 880 and the Oakland International Airport, Polvorosa Business Park provides a direct link to key commercial and industrial centers throughout the entire Bay Area. It is less than 30 minutes to either San Francisco, San Jose, or the Tri-Valley.

## Contact Us

JOE YAMIN

+1 510 433 5812

[joe.yamin@colliers.com](mailto:joe.yamin@colliers.com)

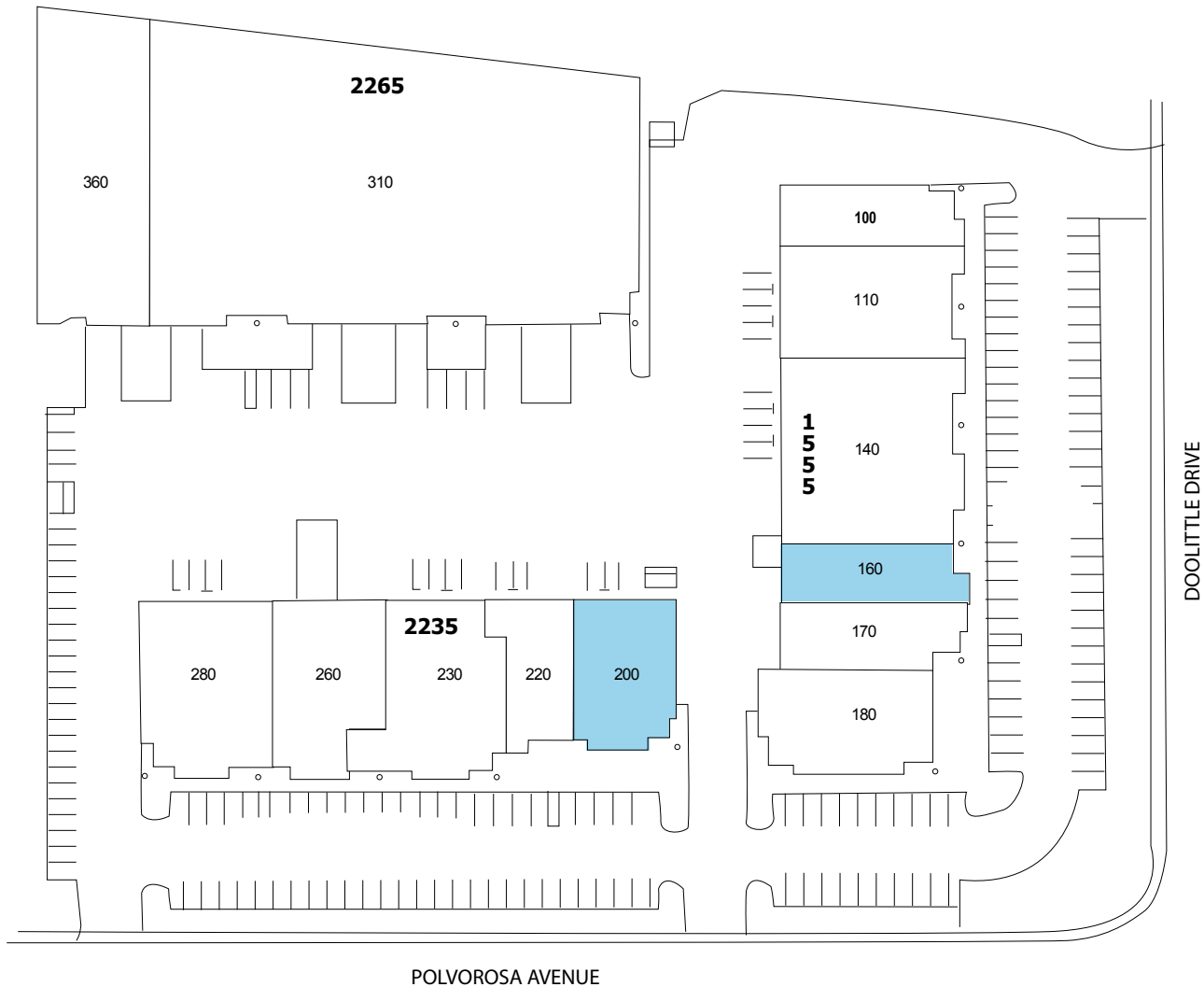
CA License No. 01327666



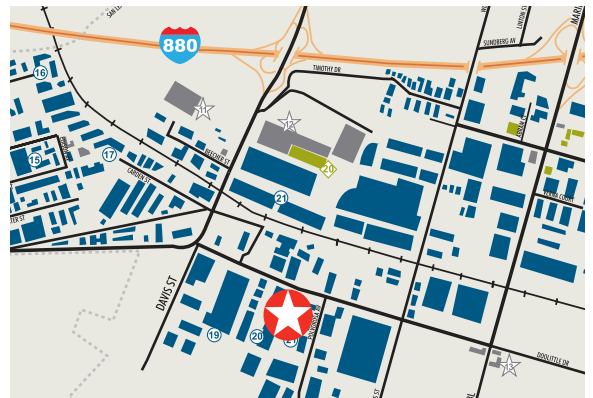
FOR LEASE > ±3,881 SQUARE FEET OFFICE/INDUSTRIAL SPACE

# Polvorosa Business Park

2235 POLVOROSA AVENUE & 1555 DOOLITTLE DRIVE | SAN LEANDRO, CA 94577



Copyright © 2017 Colliers International. Information herein has been obtained from sources deemed reliable, however its accuracy cannot be guaranteed. The user is required to conduct their own due diligence and verification.



**JOE YAMIN**  
+1 510 433 5812  
joe.yamin@colliers.com  
CA License No. 01327666

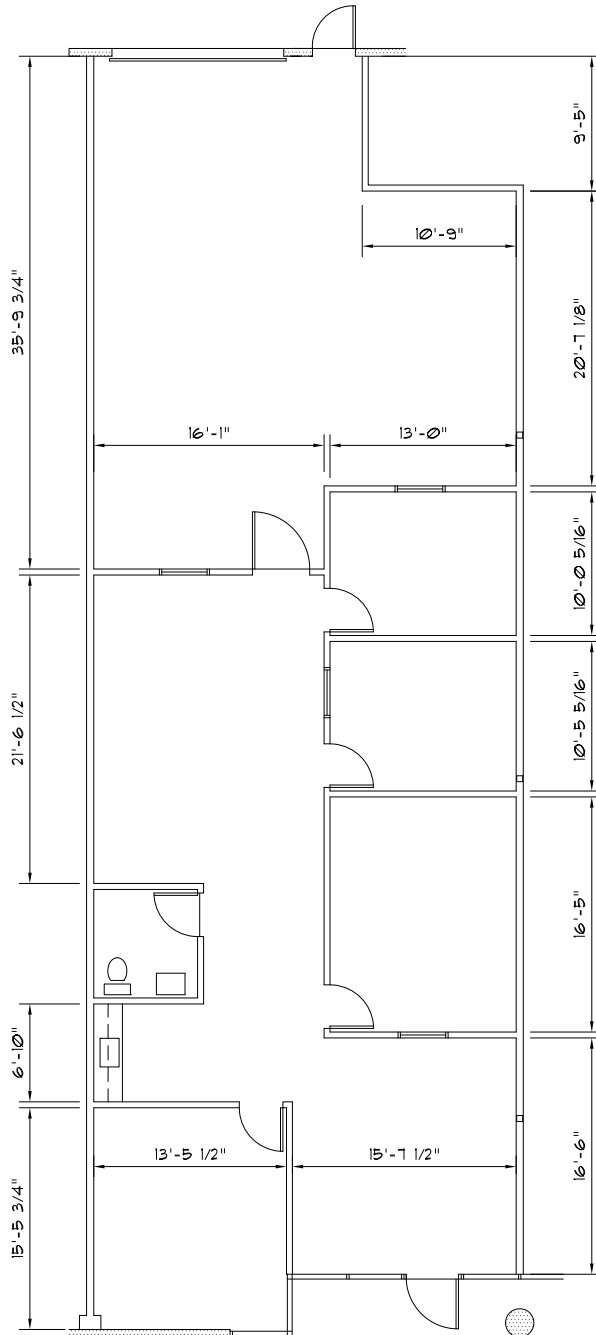


1999 Harrison Street, Suite 1750  
Oakland, CA 94612  
+1 510 986 6770  
[www.colliers.com/oakland](http://www.colliers.com/oakland)

FOR LEASE > ±3,881 SQUARE FEET OFFICE/INDUSTRIAL SPACE

# Polvorosa Business Park | Suite 160

2235 POLVOROSA AVE | SAN LEANDRO, CA 94577



## Property Description

- ±2,610 square feet
- 70% Office
- One (1) Roll Up Door
- Doolittle frontage
- ±3/1,000 parking ratio

**Rent:** \$1.35 sf/mo NNN

*(Expenses are currently estimated at \$0.354 sf/mo)*

Copyright © 2018 Colliers International. Information herein has been obtained from sources deemed reliable, however its accuracy cannot be guaranteed. The user is required to conduct their own due diligence and verification.

**JOE YAMIN**  
+1 510 433 5812  
joe.yamin@colliers.com  
CA License No. 01327666

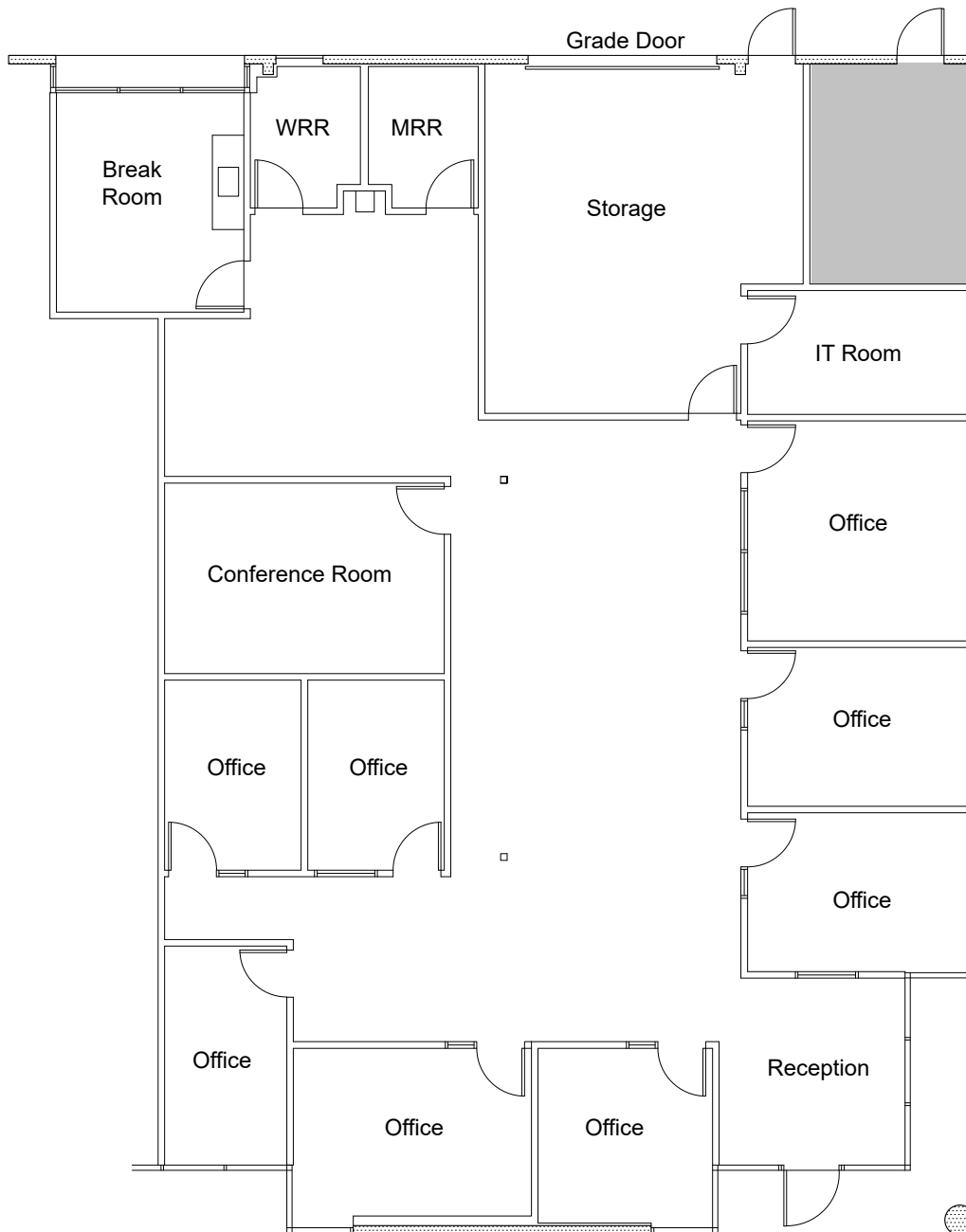


1999 Harrison Street, Suite 1750  
Oakland, CA 94612  
+1 510 986 6770  
[www.colliers.com/oakland](http://www.colliers.com/oakland)

FOR LEASE > ±3,881 SQUARE FEET OFFICE/INDUSTRIAL SPACE

# Polvorosa Business Park | Suite 200

2235 POLVOROSA AVE | SAN LEANDRO, CA 94577



## Property Description

- ±500 sq. ft. warehouse
- Grade Level Roll Up Door

**Rent:** \$1.35 sf/mo NNN  
(Expenses are currently estimated at \$0.354 sf/mo)

Copyright © 2018 Colliers International. Information herein has been obtained from sources deemed reliable, however its accuracy cannot be guaranteed. The user is required to conduct their own due diligence and verification.

**JOE YAMIN**  
+1 510 433 5812  
joe.yamin@colliers.com  
CA License No. 01327666



1999 Harrison Street, Suite 1750  
Oakland, CA 94612  
+1 510 986 6770  
[www.colliers.com/oakland](http://www.colliers.com/oakland)