

Greenfield Medical Dental Center

2450 E. GUADALUPE ROAD | GILBERT, AZ



GENEROUS TI's



FOR LEASE

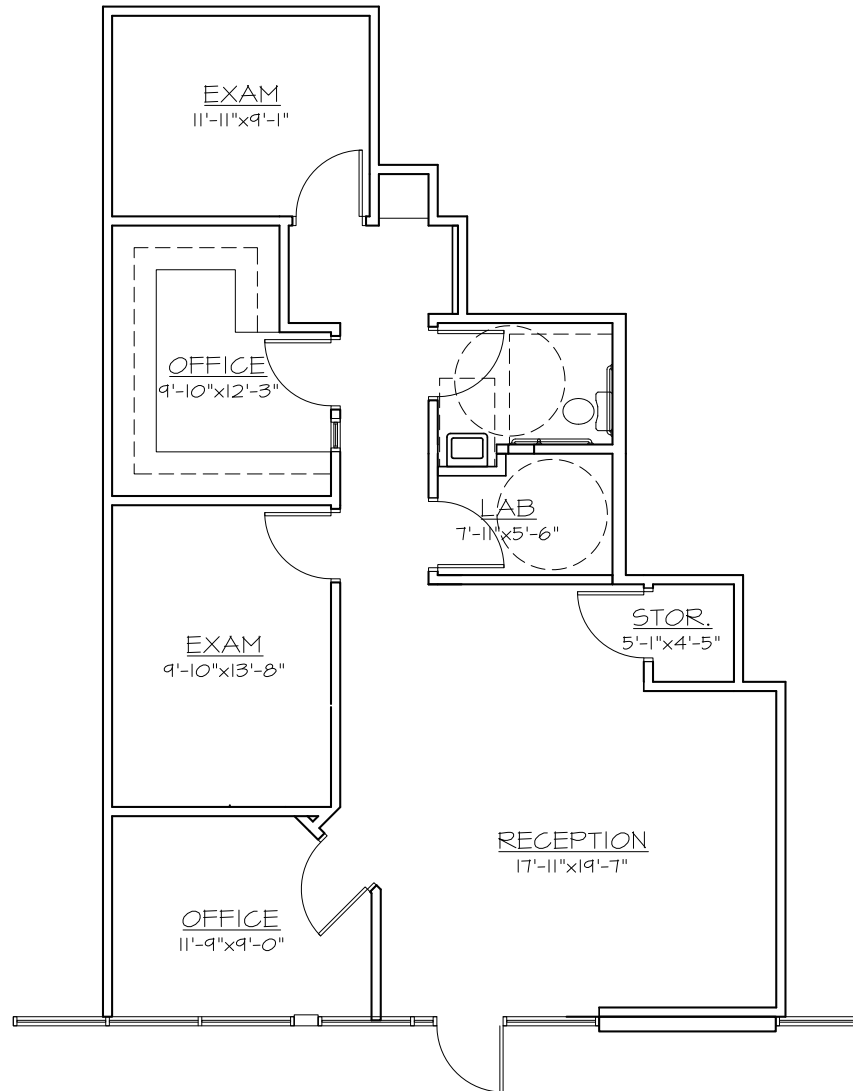
Available: Suite 103 A 1,239 SF
Suite 109 2,099 SF
Lease Rate: \$18.00 NNN
Year Built: 2005
Parking: Covered/reserved parking available
Parking ratio - 4.69/1,000
Signage: Building and Monument Signage available

PHILIP WURTH, CCIM
Executive Vice President
480 655 3310 DIR | 602 369 9261 MOB
philip.wurth@colliers.com | www.collierseoffices.com

COLLIERS INTERNATIONAL
8360 E. Raintree Dr. Ste. 130
Scottsdale, AZ 85260
480 596 9000
www.colliers.com/arizona

Greenfield Medical Dental Center

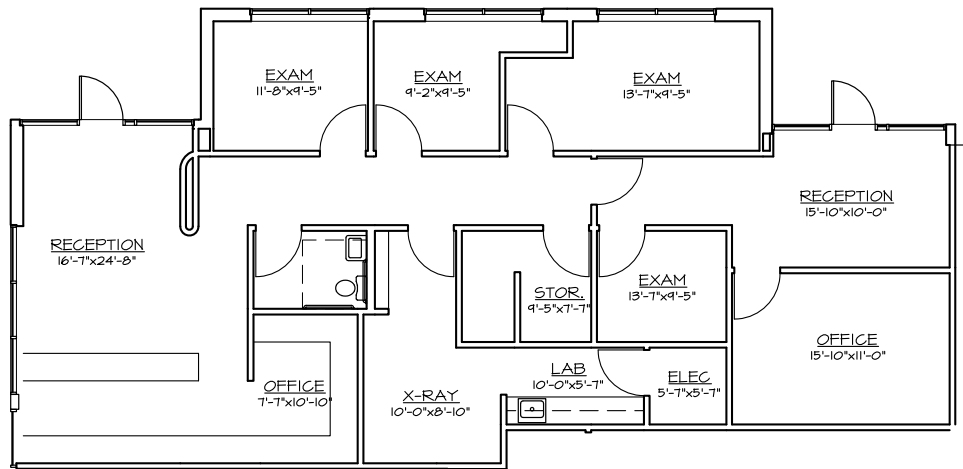
Suite 103 A ±1,239 SF



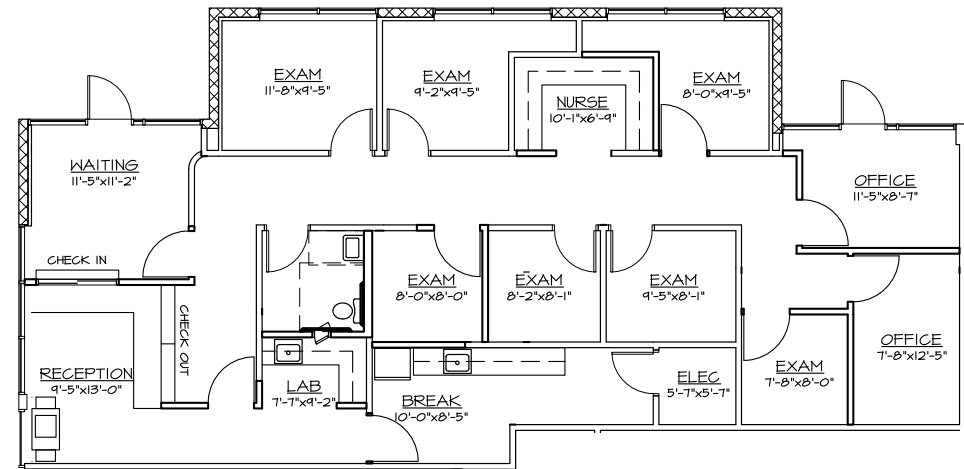
Greenfield Medical Dental Center

Suite 109 ±2,099 SF

AS BUILT PLAN



CONCEPTUAL PLAN



Philip Wurth, CCIM | 480 655 3310 | philip.wurth@colliers.com

This document has been prepared by Colliers International for advertising and general information only. Colliers International makes no guarantees, representations or warranties of any kind, expressed or implied, regarding the information including, but not limited to, warranties of content, accuracy and reliability. Any interested party should undertake their own inquiries as to the accuracy of the information. Colliers International excludes unequivocally all inferred or implied terms, conditions and warranties arising out of this document and excludes all liability for loss and damages arising there from. This publication is the copyrighted property of Colliers International and/or its licensor(s). ©2019. All rights reserved.

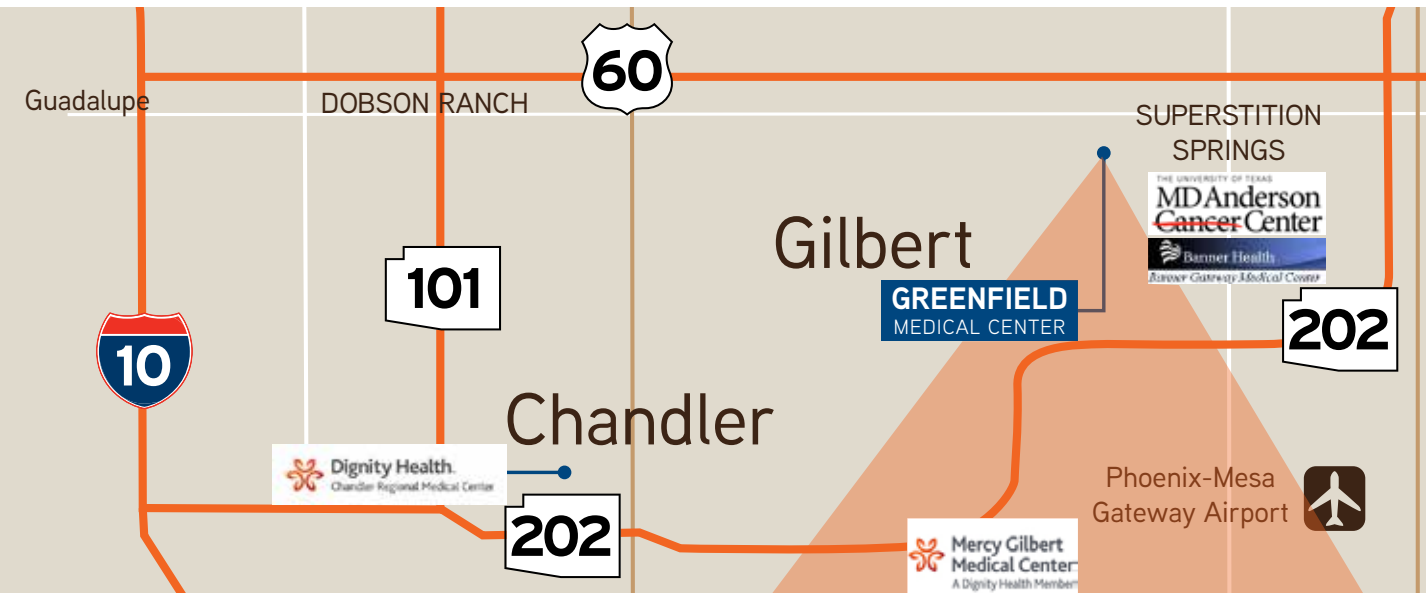
Colliers International
8360 E. Raintree Dr. | Suite 130
Scottsdale, AZ 85260
MAIN 480 596 9000
FAX 480 655 3390



Greenfield Medical Dental Center

DEMOGRAPHICS | LOCATION

DEMOGRAPHICS



1 MILE 9,234
3 MILES 114,624
5 MILES 334,625



5 MINUTE
drive to Banner
Gateway Medical Center



27,155 VPD
on Greenfield and
Guadalupe Roads

TRAFFIC
COUNTS



25 MINUTE
drive to Sky Harbor
International Airport



CONVENIENT
access to US 60

TENANTS INCLUDE:

- Arizona Surgery Center
- Simon Med
- Pediatric Dental Specialists
- Southwest Contemporary Women's Care
- Desert Vista Eye Specialists
- New Pharmacy Ventures

