

FOR SALE > LAND

±0.54 ACRES AND UP TO ±0.96 ACRES

Tidewater Drive & Lafayette Boulevard
Norfolk, VA 23510

ERIN D. CORRIE | 757 515 3232 | erin.corrie@colliers.com

CHRISTOPHER E. TODD | 757 752 1095 | christopher.todd@colliers.com

Property Features

- > ±0.54 acres and up to ±0.96 acres
- > Prime redevelopment assemblage site
- > Full block along Lafayette Blvd
- > Multiple Ingress/Egress points

NEARBY NATIONAL RETAILERS:

CVS
pharmacy



O'Reilly
AUTO PARTS



RITE
AID

GNC
LIVE WELL

FAMILY
DOLLAR



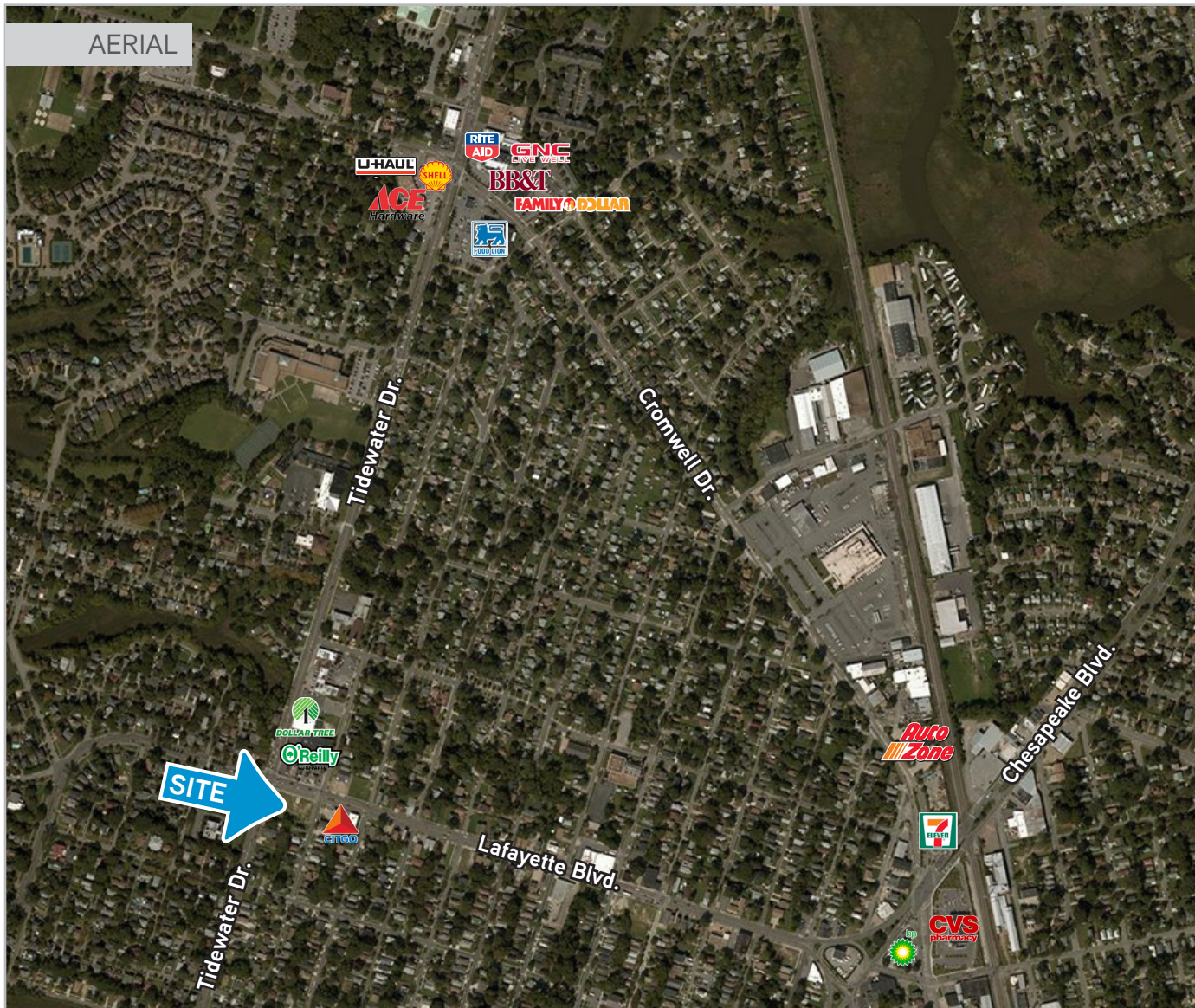
DEMOGRAPHIC FACTS	1 Mile	3 Miles	5 Miles
Population	15,638	154,709	291,831
Total Employees	2,759	102,582	216,654
Average HH Income	\$61,984	\$61,571	\$61,357

Traffic Counts - Tidewater Drive ±30,100 VPD



Colliers
INTERNATIONAL

FOR SALE > Prime corner assemblage site



CONTACTS US:

ERIN D. CORRIE

757 515 3232

erin.corrie@colliers.com

CHRISTOPHER E. TODD

757 752 1095

christopher.todd@colliers.com

COLLIERS INTERNATIONAL

500 E. Main Street, Suite 808

Norfolk, VA 23510

757 441 3636

www.colliers.com/norfolk



The information contained herein was obtained from sources, believed reliable, however, Colliers International makes no guarantees, warranties or representations as to the completeness or accuracy thereof. The presentation of this property is submitted subject to errors, omissions, change of price or conditions prior to sale or lease, or withdrawal without notice. File name: Lafayette&Tidewater_Land_Sale rev 5-18-17