

FOR SALE/LEASE

27,440 SF Industrial Building



1218-1220 11TH STREET, HAMMONTON, NEW JERSEY



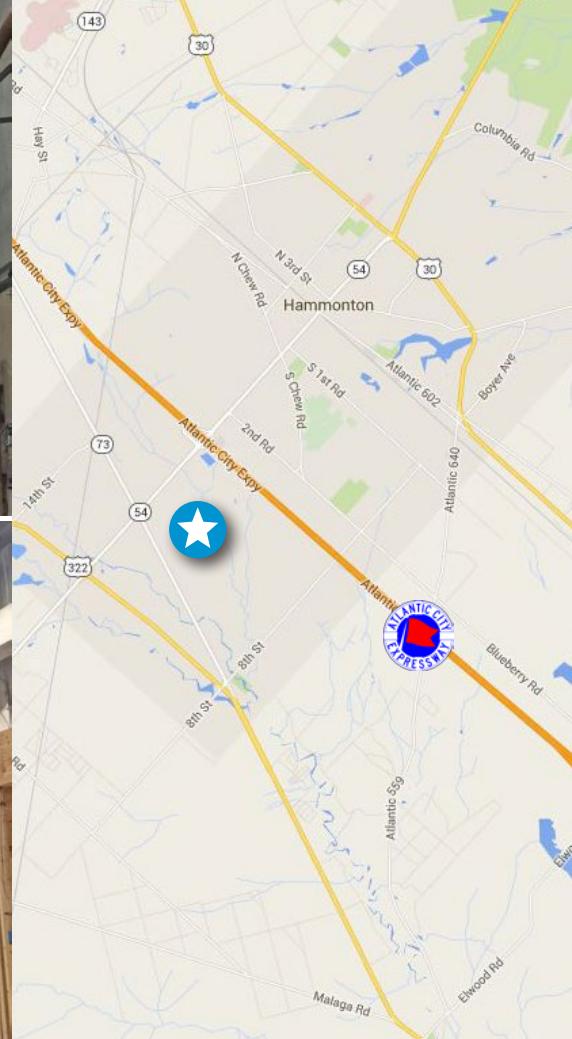
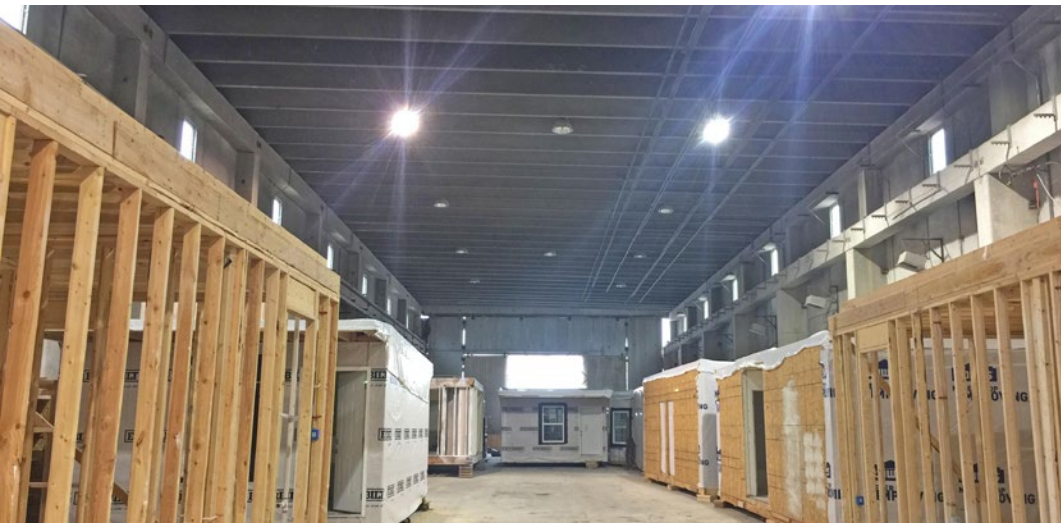
Property Features

- › 27,440 SF single-story industrial building situated on 15 acres
- › Property consists of three sections:
 - Carpenter shop
 - Main plant
 - Office area
- › Former precast concrete manufacturing plant
- › 30' ceiling height
- › Six drive-in doors
- › Two 25-ton cranes
- › Easy access to Routes 30 and 322, the Atlantic City Expressway and the Garden State Parkway

Contact

TONY DIDIO, SIOR
SENIOR VICE PRESIDENT
+1 609 820 5900
tony.didio@colliers.com

COLLIERS INTERNATIONAL
1317 Route 73
Suite 109
Mount Laurel, NJ 08054
+1 856 234 9300
www.colliers.com/mountlaurel



Contact

TONY DIDIO, SIOR
SENIOR VICE PRESIDENT
+1 609 820 5900
tony.didio@colliers.com



COLLIERS INTERNATIONAL
1317 Route 73
Suite 109
Mount Laurel, NJ 08054
+1 856 234 9300



@ColliersSNJ



ColliersSNJ



colliers.com/mountlaurel

The foregoing information was furnished to us by sources which we deem to be reliable, but no warranty or representation is made as to the accuracy thereof. Subject to correction of errors, omissions, change of price, prior sale or withdrawal from market without notice. The aerial image is intended to provide a general outline of the subject property. It is not a survey nor should it be relied upon for purposes of determining property lines or boundaries.