

FOR LEASE > RETAIL SPACE

# Smith's Anchored Avenues

402 6TH AVENUE SALT LAKE CITY, UT



## Property Information

- > Neighborhood retail location in the heart of the Avenues
- > Space available:
- > 4,600 SF - \$18.00/SF NNN
- > Unique opportunity in an area with limited retail services
- > High population density

DEMOGRAPHICS	1 MILE	3 MILE	5 MILE
<b>Population</b>			
2017 Estimated	24,530	108,907	219,396
2022 Projected	24,639	110,619	222,266
<b>Households</b>			
2017 Estimated	13,471	48,277	87,542
2022 Projected	13,613	49,921	90,054
<b>Income</b>			
2017 Median HHI	\$46,516	\$32,852	\$31,223
2017 Average HHI	\$83,996	\$72,978	\$77,458
2017 Per Capita	\$39,739	\$30,069	\$28,973

*Information provided by ESRI Experian through Alteryx*

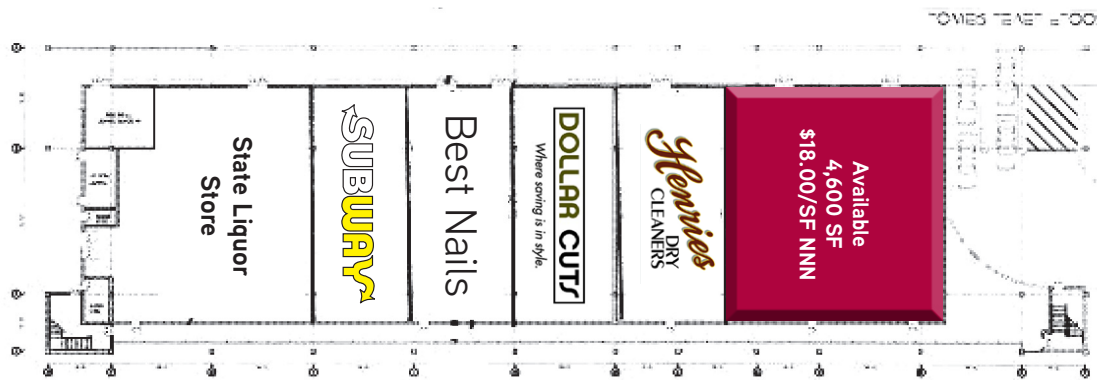
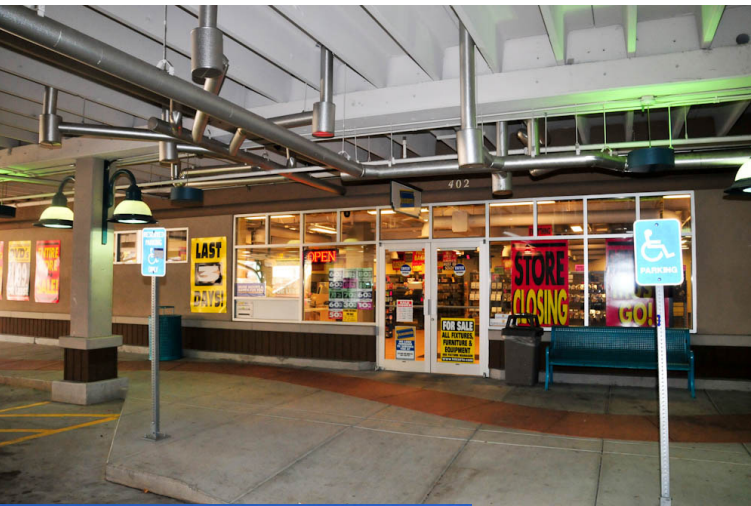
**Dan Moore**  
+1 801 947 8365  
dan.moore@colliers.com

*Colliers International*  
6550 S Millrock Dr | Suite 200  
Salt Lake City, UT 84121  
P: +1 801 947 8300

FOR LEASE > RETAIL SPACE

# Smith's Anchored Avenues

402 6TH AVENUE SALT LAKE CITY, UT



Colliers International  
6550 S Millrock Dr | Suite 200  
Salt Lake City, UT 84121  
P: +1 801 947 8300





FOR LEASE > RETAIL SPACE

# Smith's Anchored Avenues

402 6TH AVENUE SALT LAKE CITY, UT



This document has been prepared by Colliers International for advertising and general information only. Colliers International makes no guarantees, representations or warranties of any kind, expressed or implied, regarding the information including, but not limited to, warranties of content, accuracy and reliability. Any interested party should undertake their own inquiries as to the accuracy of the information. Colliers International excludes unequivocally all inferred or implied terms, conditions and warranties arising out of this document and excludes all liability for loss and damages arising there from. This publication is the copyrighted property of Colliers International and/or its licensor(s). ©2017. All rights reserved.

*Colliers International*  
6550 S Millrock Dr | Suite 200  
Salt Lake City, UT 84121  
P: +1 801 947 8300

