



# Turnkey Medical Space

## Get in touch

### Sara Donovan

Licensed Salesperson  
Dir +1 609 297 5172  
Mob +1 732 783 6945  
[sara.donovan@colliers.com](mailto:sara.donovan@colliers.com)

### Charlie Hatfield

Licensed Salesperson  
Dir +1 609 297 5177  
Mob +1 908 295 9789  
[charlie.hatfield@colliers.com](mailto:charlie.hatfield@colliers.com)



## 4 Industrial Way W Eatontown, New Jersey

### Sublease Available

#### Features

- 6,000 SF sublease located on lower level of a three-story, 80,000 SF, Class A building
- Reception and waiting area with upgraded finishes
- Available immediately through April 2027
- Term: 1 – 5 years
- Call for pricing

# 4 Industrial Way W Eatontown, New Jersey

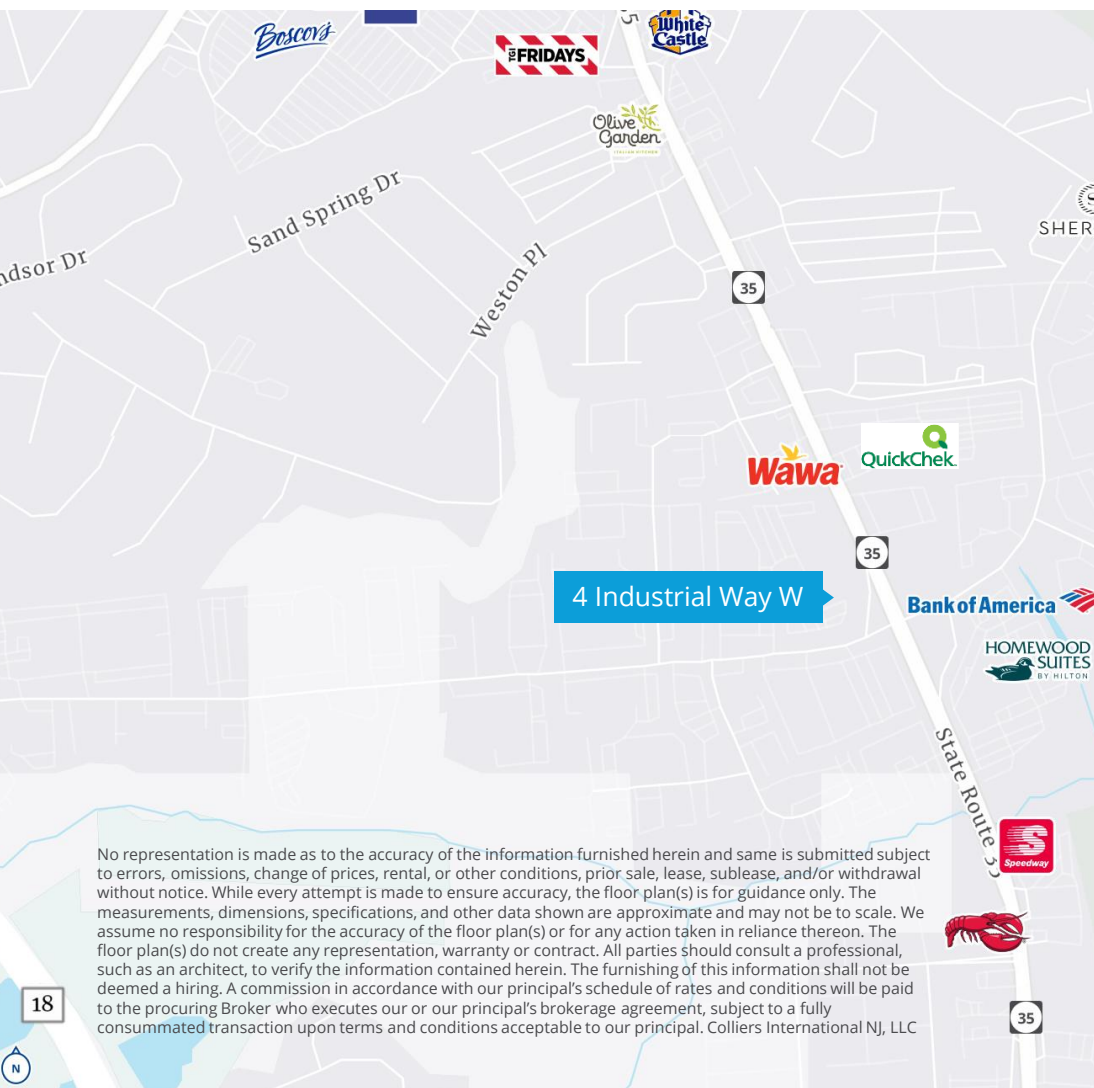
## Sublease

### Space Features

- 6 exam rooms
- HR/Administration desk
- 2 procedure rooms

### Location

- Located on Route 35 South
- Immediate access to restaurants, banking, and hotels.
- Close to Garden State Parkway, Route 18, and 36



### Get in touch

#### Sara Donovan

Licensed Salesperson  
Dir +1 609 297 5173  
Mob +1 215 595 8898  
[sara.donovan@colliers.com](mailto:sara.donovan@colliers.com)

#### Charlie Hatfield

Licensed Salesperson  
Dir +1 609 297 5177  
Mob +1 908 295 9789  
[charlie.hatfield@colliers.com](mailto:charlie.hatfield@colliers.com)

Colliers International, NJ LLC  
500 Alexander Park Dr., Ste 101  
Princeton, NJ 08540  
+1 609 269 1111  
[colliers.com](http://colliers.com)



No representation is made as to the accuracy of the information furnished herein and same is submitted subject to errors, omissions, change of prices, rental, or other conditions, prior sale, lease, sublease, and/or withdrawal without notice. While every attempt is made to ensure accuracy, the floor plan(s) is for guidance only. The measurements, dimensions, specifications, and other data shown are approximate and may not be to scale. We assume no responsibility for the accuracy of the floor plan(s) or for any action taken in reliance thereon. The floor plan(s) do not create any representation, warranty or contract. All parties should consult a professional, such as an architect, to verify the information contained herein. The furnishing of this information shall not be deemed a hiring. A commission in accordance with our principal's schedule of rates and conditions will be paid to the procuring Broker who executes our or our principal's brokerage agreement, subject to a fully consummated transaction upon terms and conditions acceptable to our principal. Colliers International NJ, LLC