

Office/Warehouse Space for Lease



Briarwood Revere Business Park

12508–12650 East Briarwood Avenue
Centennial, CO 80112

Total Project Size

107,071 SF

Parking

3.5:1,000 SF

Clear Height

15'

Operating Expenses

\$7.97/SF (Est. 2025)

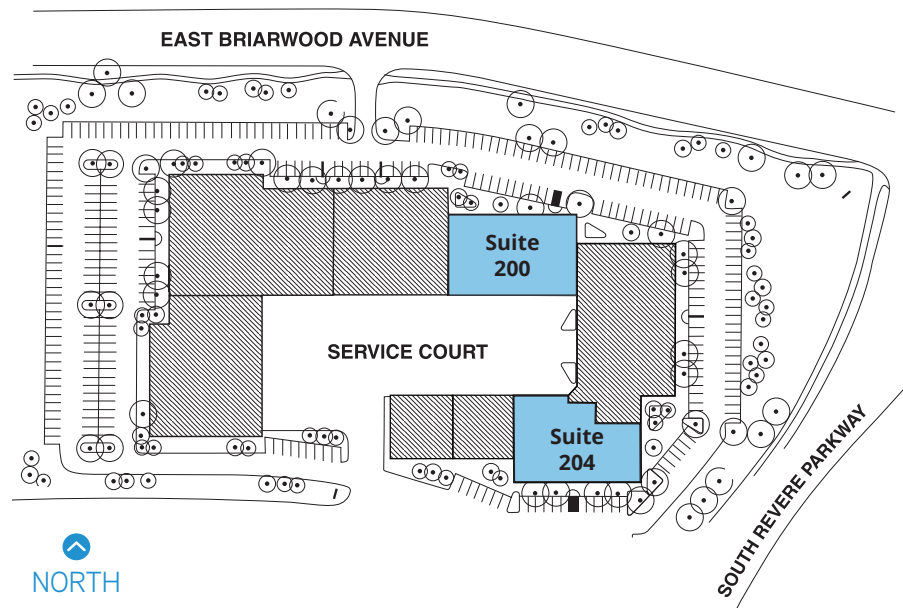
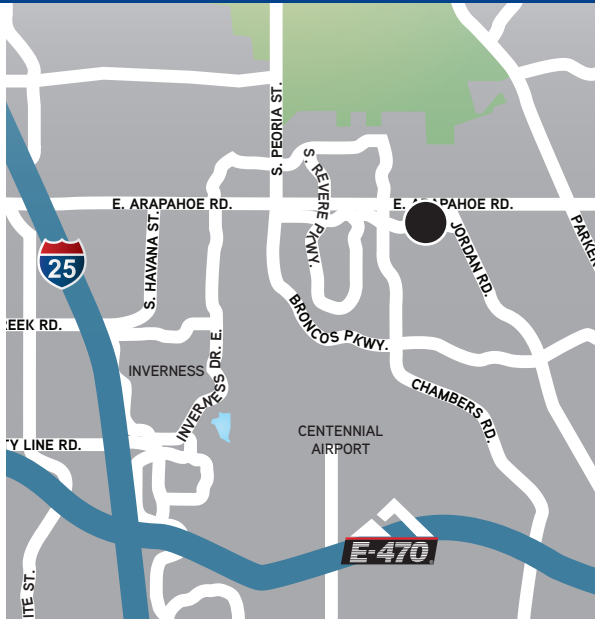
Available

Suite	Size	Loading	Lease Rate
200	12,600 SF	Two (2) Drive-In	\$12.50/SF NNN
204	11,459 SF	One (1) Drive-In	\$12.50/SF NNN

- › Single-Story Office/ Warehouse Complex Located in the Heart of Centennial Airport
- › 30% to 80% Office
- › Convenient Access to I-25 via Arapahoe Road
- › Individual Tenant Identification Signage

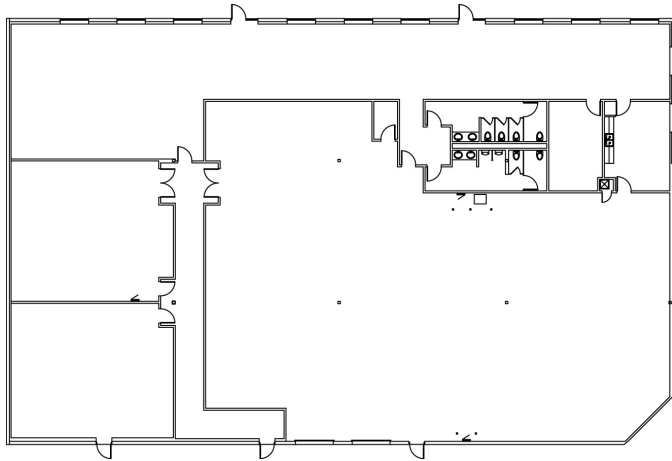
Briarwood Revere Business Park
12508-12650 East Briarwood Avenue
Centennial, CO 80112

4643 S. Ulster St. | Suite 1000
Denver, CO 80237
colliers.com/denver
303 745 5800



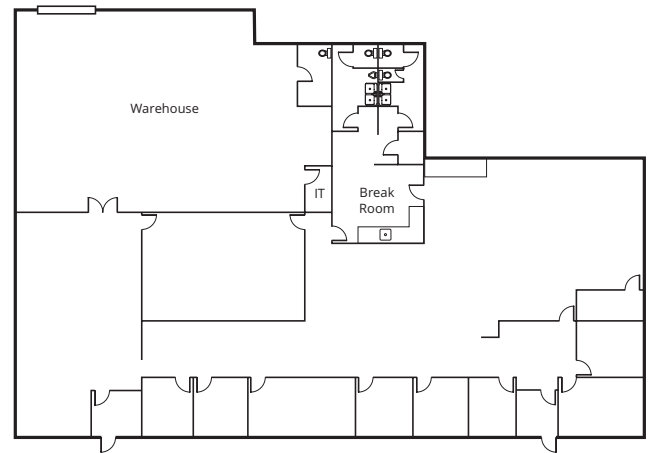
Suite 200

12,600 SF



Suite 204

11,459 SF



T.J. Smith, SIOR
+1 303 283 4576
tj.smith@colliers.com

David Hazlett
+1 303 283 4573
david.hazlett@colliers.com

**Brokerage
Disclosure**



This document has been prepared by Colliers for advertising and general information only. Colliers makes no guarantees, representations or warranties of any kind, expressed or implied, regarding the information including, but not limited to, warranties of content, accuracy and reliability. Any interested party should undertake their own inquiries as to the accuracy of the information. Colliers excludes unequivocally all inferred or implied terms, conditions and warranties arising out of this document and excludes all liability for loss and damages arising there from. This publication is the copyrighted property of Colliers and/or its licensor(s). ©2025. All rights reserved.