



LAND FOR SALE

5 COMMERCIAL LOTS
BULK OR PARCELLED

22.31± AC | APOPKA
FLORIDA

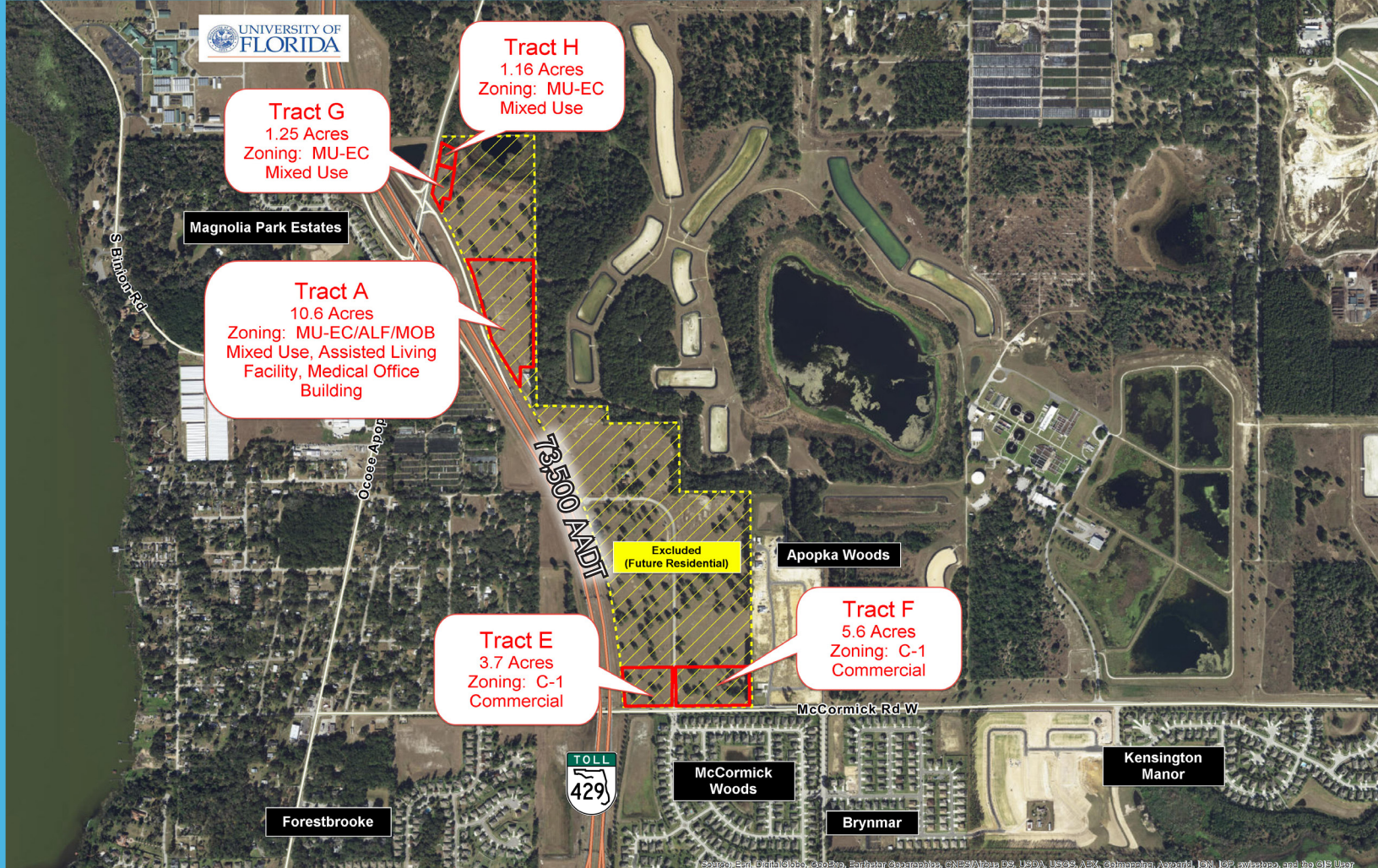
COMMERCIAL/INDUSTRIAL
ASSISTED LIVING FACILITY
MEDICAL OFFICE BUILDING
RETAIL



Accelerating success.

Property Highlights

- Easily accessible with full access to the SR 429 and Ocoee Apopka Road Exit ramp.
- Within a mile of the new Florida Hospital Apopka (opened November 2017)
- Area is projected to grow in the next five years at a rate of 32% higher than Orlando market.



For Sale - Bulk or Parcelled - 22.31± Gross Usable Acres

East of SR 429 and North of West McCormick Road, Apopka, FL 32703

DEMOGRAPHICS

	Demo Base	3 Mile Radius	Index	5 Mile Radius	Index	7 Mile Radius	Index
Total Households	910,546	10,988		43,328		105,560	
Total Population	2,464,086	34,328		133,007		307,584	
2017-2022 Pop Growth Rate	9.9%	13.1%	132	9.5%	96	8.9%	89
Median Age	37.2	35.5	95	35.6	96	36.0	97
Family Households (%)	66.8%	75.9%	114	75.7%	113	72.6%	109
Owner Occupied (%)	50.4%	65.3%	130	64.3%	128	57.7%	114
Median Household Income	\$51,917	\$53,859	104	\$51,937	100	\$50,745	98

Note: **100** = Base Comparison: Orlando-Kissimmee-Sanford CBSA (i.e. index of 130 is 30% higher than the Base Comparison)

Source: US Census Bureau; Esri 2017 Forecasts

Data Note: Income is expressed in current dollars.

David Calcanis
Executive Managing Director | Land
Direct: 407 362 6128
Mobile: 407 421 2311
david.calcanis@colliers.com

Jorge Rodriguez, CCIM
Executive Managing Director | Retail
Direct: 407 362 6141
Mobile: 407 461 6415
jorge.rodriguez@colliers.com

