

FOR SUBLEASE > OFFICE SPACE



Landmark IV

3710 LANDMARK DR. COLUMBIA, SC 29204



Landmark IV > Office Space

Landmark IV is located in a 3-building office park consisting of $\pm 225,000$ SF in the heart of Forest Acres. Being located minutes from I-77 and downtown Columbia make the buildings easily accessible from anywhere in the Columbia area. Amenities include on-site engineer, day porter, large common conference rooms and an abundance of parking.

Availabilities:

Suite 200 - $\pm 1,627$ SF
Suite 204A - ± 388 SF
Suite 204B - ± 779 SF
Suite 204 - ± 842 SF

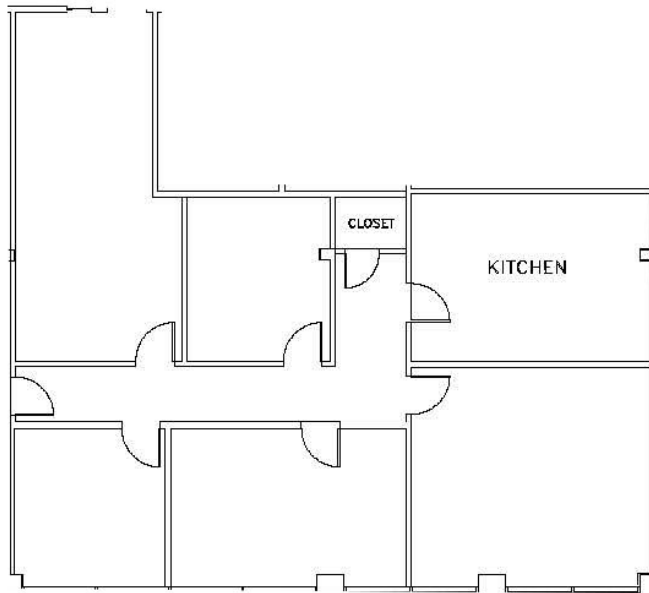
Building Amenities

- > Multiple Suites for Sublease
- > Suites 204, 204A, & 204B can be combined to total $\pm 2,009$ SF
- > Move-in condition
- > Ample Parking
- > Rental Rate - \$16.25 SF

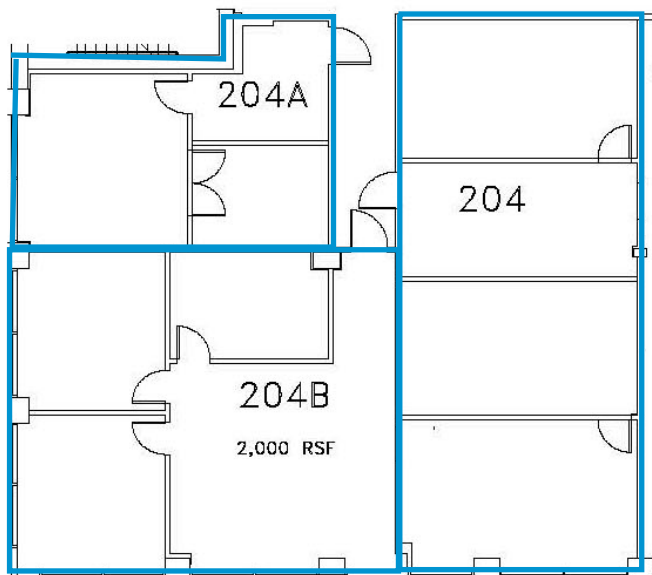
TAYLOR WOLFE
803 401 4217
Taylor.Wolfe@colliers.com

COLLIERS INTERNATIONAL
1301 Gervais Street, Suite 600
Columbia, SC 29201
www.colliers.com

Floor Plan > 2nd Floor



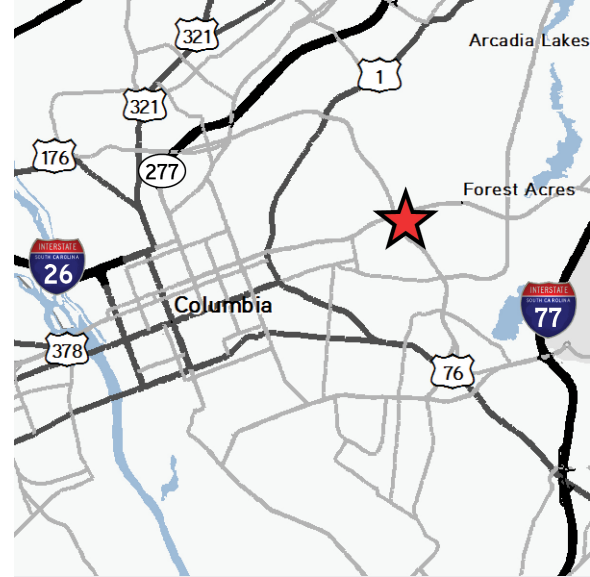
Suite 200 - ±1,627 SF



Suite 204A - ±388 SF

Suite 204B - ±779 SF

Suite 204 - ±842 SF



Contact Us

TAYLOR WOLFE

803 401 4217

Taylor.Wolfe@colliers.com

COLLIERS INTERNATIONAL
1301 Gervais Street, Suite 600
Columbia, SC 29201

www.colliers.com