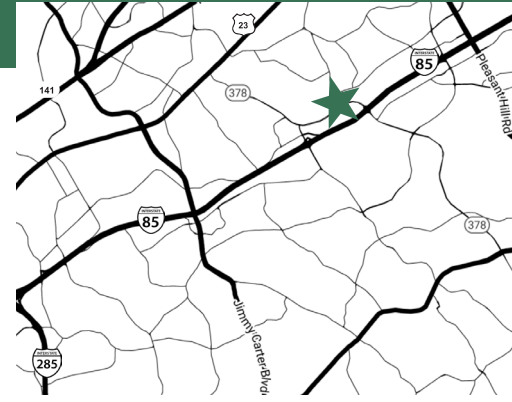


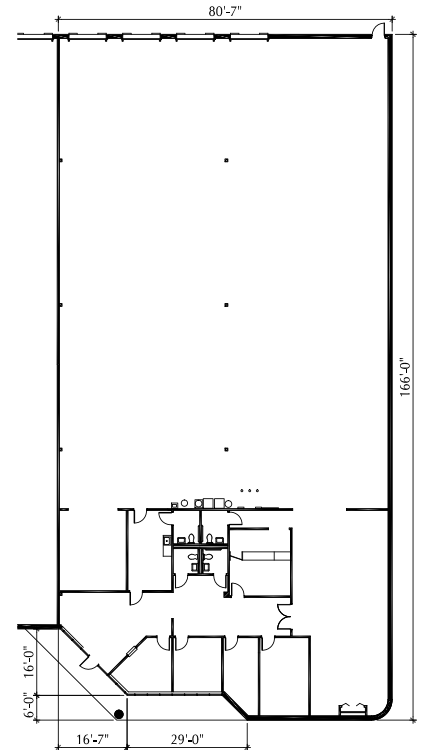
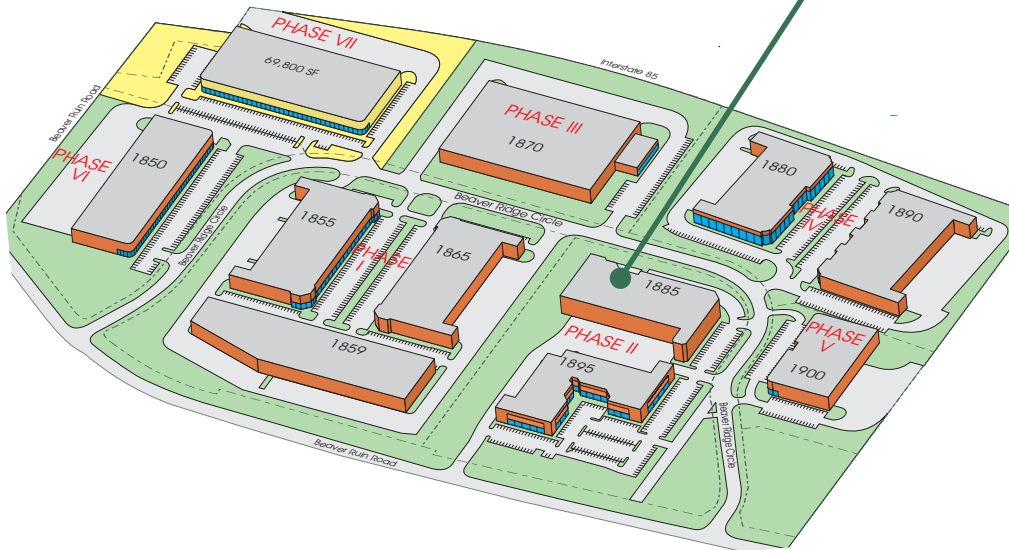
1885-C BEAVER RIDGE CIRCLE

NORCROSS, GEORGIA 30071



Building Specifications

- > Total Space Available: 16,465 SF
- > Office Space: 3,809 SF
- > Zoning M-1 (Light Industrial)
- > Construction: Brick and Block
- > Roof: Single Ply Roof
- > Fire Protection: Wet System
- > Year Built: 1985
- > Dock Doors: 4
- > Bay Depth: 116'
- > Parking: 1.5 space per 1,000 SF
- > Ceiling Height: 22'



BRIAN CAMP
DIRECT +1 404 574 1092
brian.camp@colliers.com

MAX ELLIS
DIRECT +1 404 978 2339
max.ellis@colliers.com



BEAVER RUIN BUSINESS CENTER

Beaver Ruin Business Center is a 56-acre office, industrial, and service center park containing approximately 611,651 square feet of high quality warehouse/distribution and office space. This park is strategically located with superior access and visibility at the intersection of Beaver Ruin Road and I-85, just two exits south of Gwinnett Place Mall (Pleasant Hill Road).