

FIRST SAN MICHELE LOGISTICS CENTER

by  **FIRST**
INDUSTRIAL
REALTY TRUST

24901 San Michele Road, Moreno Valley, CA 92551



±187,985 SF
LOGISTICS FACILITY
FOR LEASE

 **FIRST**
INDUSTRIAL
REALTY TRUST



PROPERTY FEATURES

32'

Warehouse Clearance

5,260 SF

Two Story Office Space

30

Dock-High Doors (9'x10')
- 20 Edge of Docks Levelers, 30,000 lb.
- 2 Mechanical Pit Levelers, 35,000 lb.
- 22 Dock Light/Fan Combos

40

Trailer Stalls
(14'x53')

2,000

Amp service, 277/480 Volts, 3-Phase,
with 2000 Amp additoinal UGPS

185'

Secured 7" Concrete Truck
Court

1

Ground-Level Door (12'x14')

91

Auto Parking Spaces

ESFR

Sprinkler System
(K-17 Heads, 52 PSI)

6"

Warehouse Slab
4000 PSI

2.5%

Skylights

LED

Motion Sensor
Warehouse Lighting

52'x60'

Column Spacing



CORPORATE NEIGHBORS



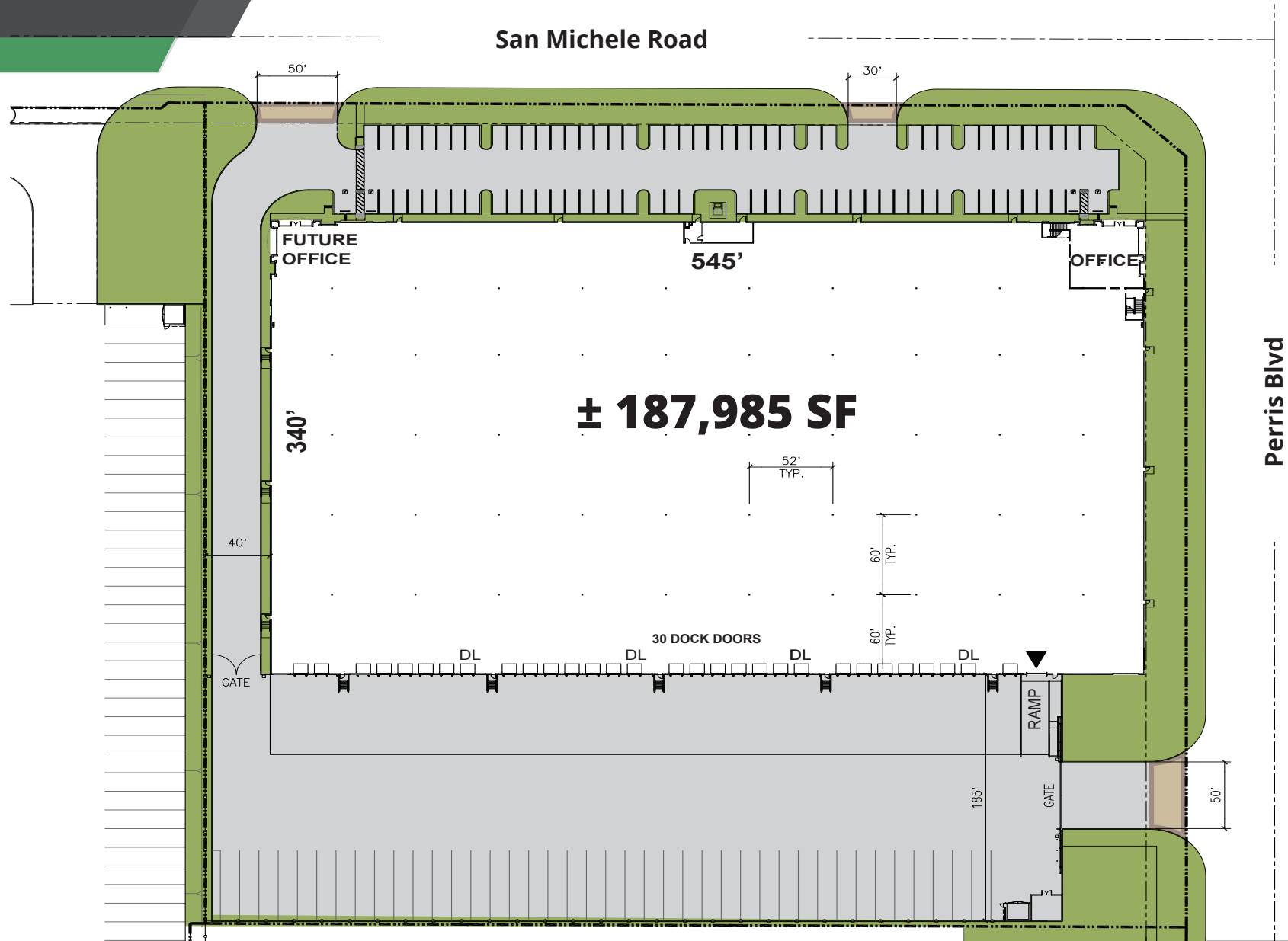
HARBOR FREIGHT



M I N K A
G R O U P

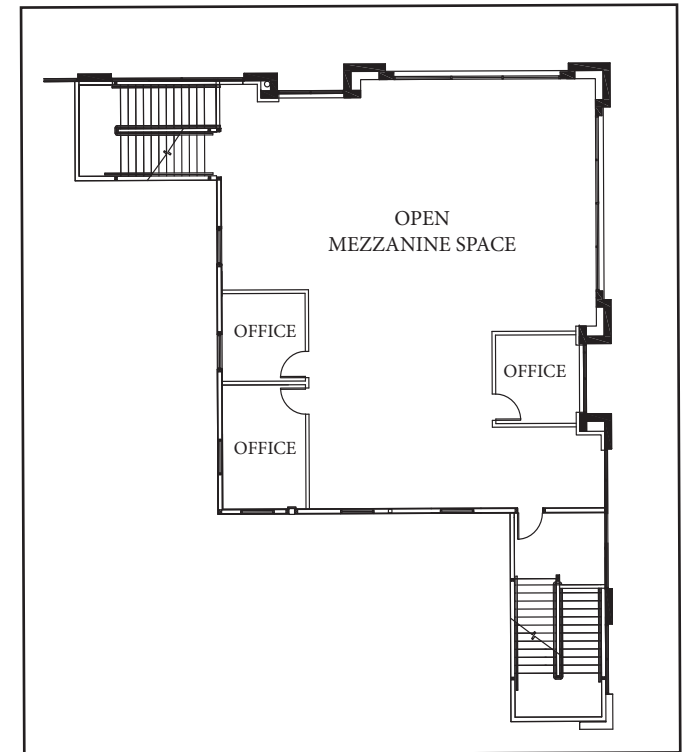
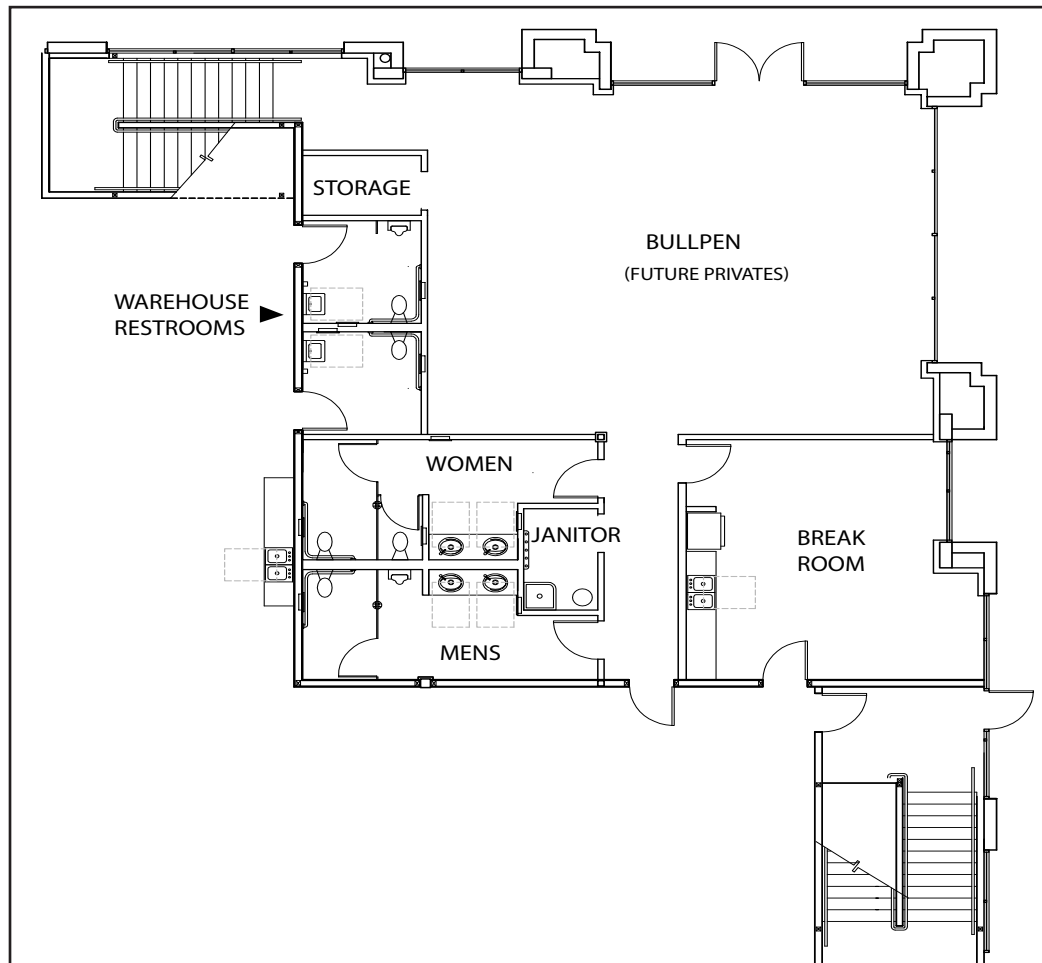


SITE PLAN



OFFICE PLANS

First Floor



Second Floor

SOUTHERN CALIFORNIA LOGISTICS NETWORK



Kevin McKenna
Vice Chair
Lic. 00887289
+1 949 300 0084
Kevin.McKenna@colliers.co-

Heather Winger
+1 801 404 8631
Heather.Winger@colliers.com

