



FOR LEASE > CONCORD, CALIFORNIA 94520

# 1333 WILLOW PASS ROAD



## AVAILABLE SPACE

Suite 203 ±1,555 Square Feet

Suite 204 ±1,445 Square Feet (Available 11/1/19)

## PROPERTY HIGHLIGHTS

- > Beautiful landscaping throughout
- > Immediate access to I-680 and Highway 242
- > On-site property management
- > Short walk to The Veranda and the Willows Shopping Center
- > 5/1,000 SF parking ratio

## CONTACT INFORMATION

MATT HURD

925 279 5567

[matt.hurd@colliers.com](mailto:matt.hurd@colliers.com)

CA Lic. 01347571

SCOTT ELLIS SIOR

925 279 5575

[scott.ellis@colliers.com](mailto:scott.ellis@colliers.com)

CA License No. 00713974

## COLLIERS INTERNATIONAL

1850 Mt Diablo Boulevard, Suite 200

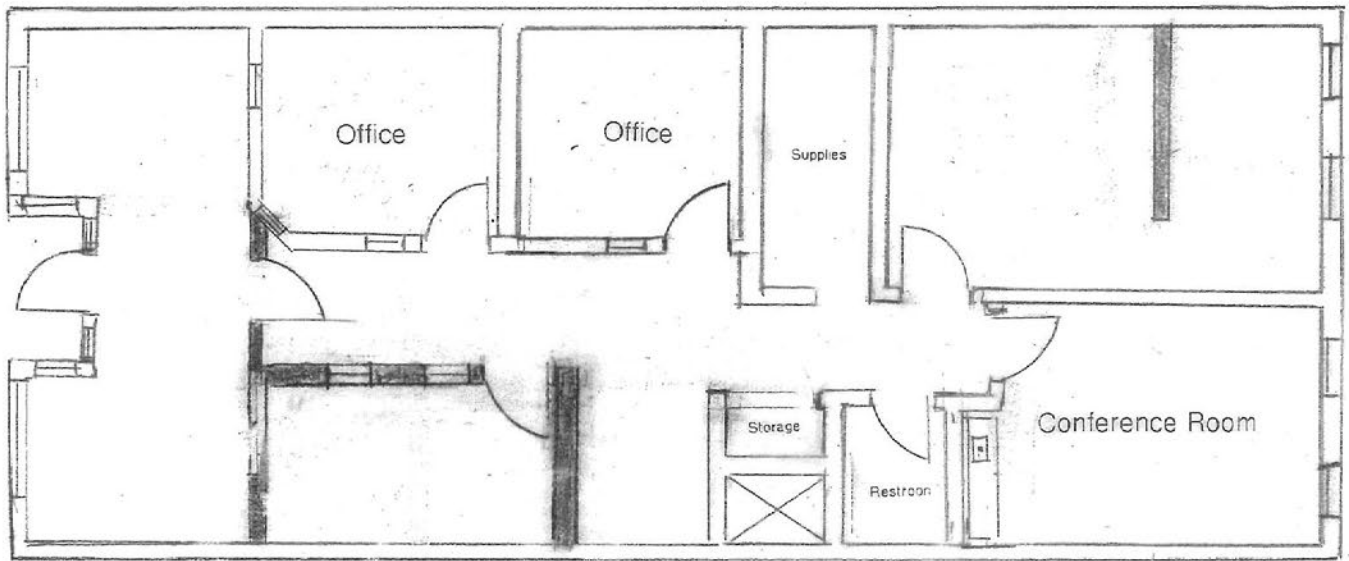
Walnut Creek, California 94596

[colliers.com/walnutcreek](http://colliers.com/walnutcreek)

FOR LEASE > CONCORD, CALIFORNIA 94520

# 1333 WILLOW PASS ROAD

SUITE 203 > ±1,555 SQUARE FEET



SUITE 204 > ±1,445 SQUARE FEET

Available 11/1/2019



## CONTACT INFORMATION



**MATT HURD**  
925 279 5567  
matt.hurd@colliers.com  
CA Lic. 01347571

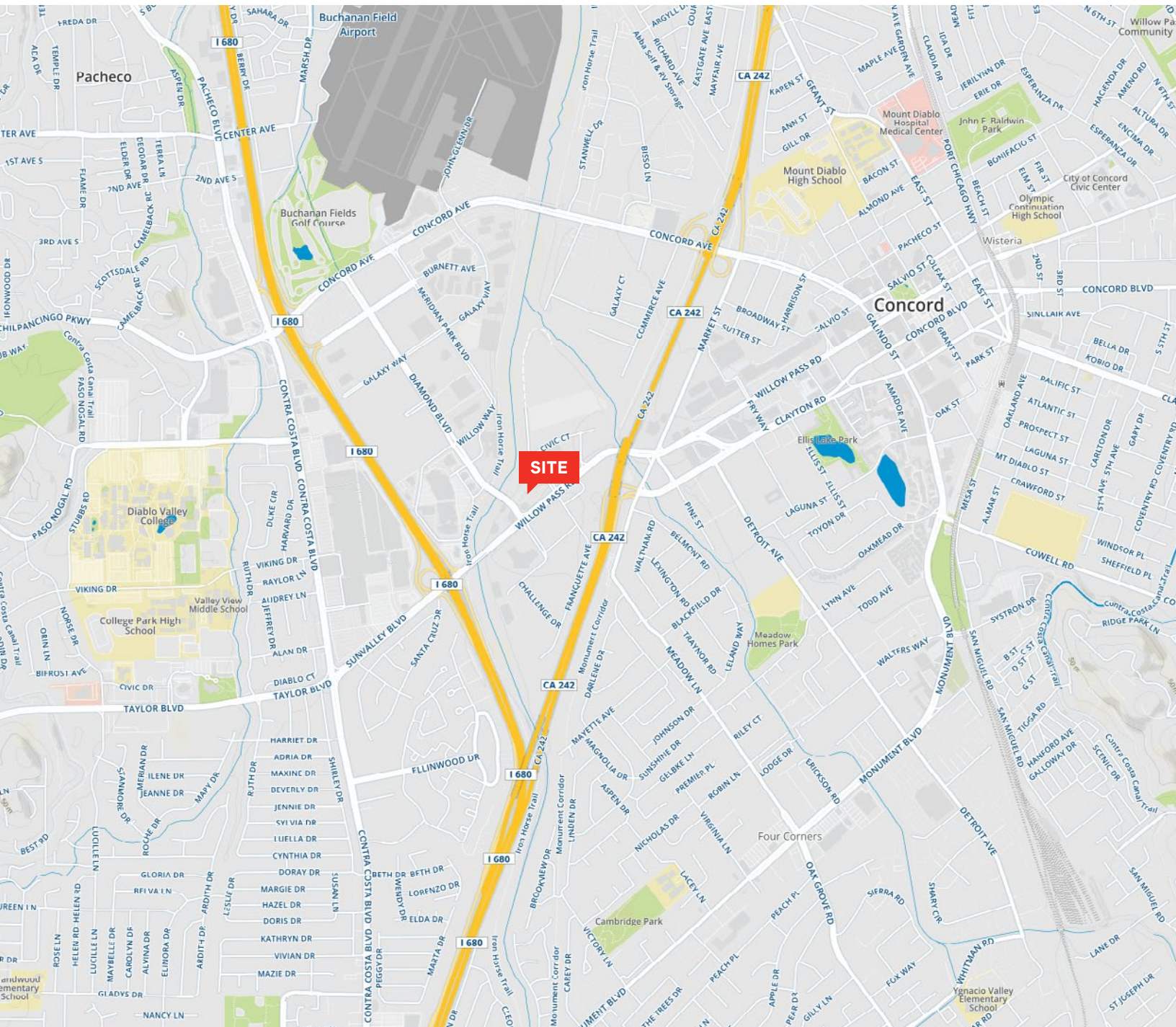
**SCOTT ELLIS** SIOR  
925 279 5575  
scott.ellis@colliers.com  
CA License No. 00713974

**COLLIERS INTERNATIONAL**  
1850 Mt Diablo Boulevard, Suite 200  
Walnut Creek, California 94596  
colliers.com/walnutcreek



FOR LEASE > CONCORD, CALIFORNIA 94520

# 1333 WILLOW PASS ROAD



## CONTACT INFORMATION



**MATT HURD**  
925 279 5567  
matt.hurd@colliers.com  
CA Lic. 01347571

**SCOTT ELLIS** SIOR  
925 279 5575  
scott.ellis@colliers.com  
CA License No. 00713974

**COLLIERS INTERNATIONAL**  
1850 Mt Diablo Boulevard, Suite 200  
Walnut Creek, California 94596  
colliers.com/walnutcreek