



Suite 111 - 9,616 SF Available

THOMPSON CENTER WATERS

5481 West Waters Avenue | Tampa, FL

Thompson Center Waters is an *attractive* industrial business park *conveniently located* north of Tampa International Airport, with *easy access* to the Veteran's Expressway, Pinellas County, & Pasco County.

Property Highlights

Available Space:	9,616 SF
Parking:	4/1,000 SF
Ceiling Height:	9'
Comments:	Wiring in place; Glass on 3 sides of the office

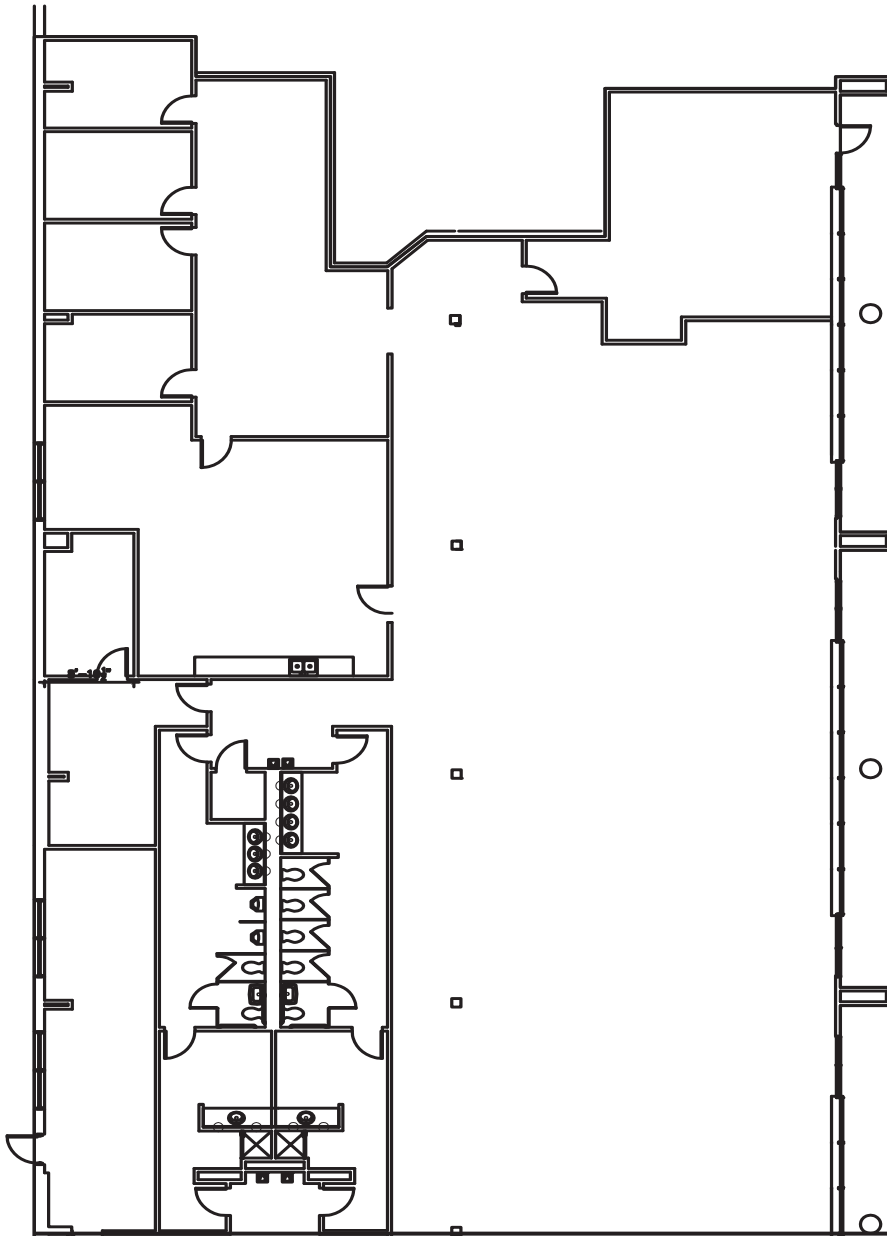
- > The area offers a variety of amenities including hotels, restaurants, shopping and banking within a few minutes drive.
- > Pleasant tree-scaped environment with good visibility to Waters Ave., Anderson Rd., and Florida Mining Blvd.
- > Day care on site
- > Property management on site
- > Egress to Anderson Rd. from TCW Office Park
- > Frontier FIOS & Spectrum Available
- > Tenants: Home Depot, BayCare, Hayward Baker, Terracon Engineers



THOMPSON CENTER WATERS

5481 West Waters Avenue | Tampa, FL

Floor Plan



Broker Contact:

MARY CLARE CODD, SIOR
maryclare.codd@colliers.com
(813) 221-2290



<http://www.colliers.com/maryclare.codd>

Owner Contact:

FIRST INDUSTRIAL REALTY TRUST, INC.
5455 W Waters , Suite 211
Tampa, Florida 33634
Direct: (813) 884-6161



www.firstindustrial.com

OWNERSHIP PLATFORM & CAPABILITIES

First Industrial RealtyTrust, Inc.

20+
years of
experience

\$4.0 billion
total capitalization
NYSE listed

65 million
SF managed &
under development

590
number of properties in
top industrial markets

All information furnished regarding the property for sale, rental or financing is obtained from sources deemed reliable. No representation is made to the accuracy thereof and is submitted subject to errors, omissions, change of price rental or other conditions, prior sale, lease, or financing, or withdrawal without notice. First Industrial Realty Trust, Inc. represents the Seller in this transaction and as such owes all duties and obligations thereto.