

FOR LEASE > OFFICE



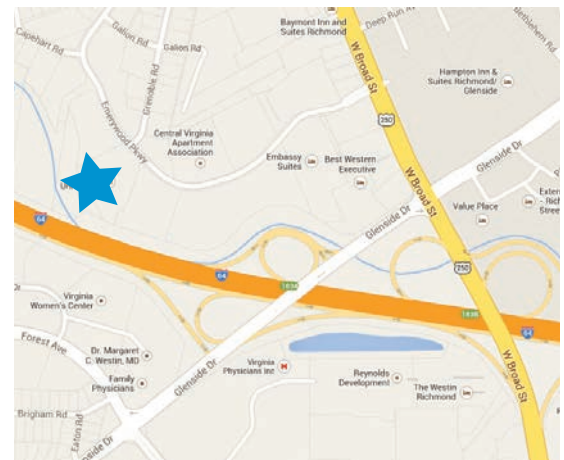
Commerce Plaza I

2809 EMERYWOOD PARKWAY, RICHMOND, VA 23294



PROPERTY FEATURES

- > Commerce Plaza I is an 83,690 SF five story office building
- > Two suites available for lease: 3,253 RSF and 2,435 RSF
- > **Recently renovated lobby and directory board**
- > Abundant parking (4.18/1,000 SF)
- > M-1 zoning
- > Building signage visible from I-64
- > Two story atrium lobby
- > Conveniently located near W. Broad Street & Glenside Drive at I-64
- > Aggressive lease terms



AGENT: CHRIS WALLACE
804 591 2424
RICHMOND, VA
chris.wallace@colliers.com

AGENT: MATT HAMILTON
804 591 2431
RICHMOND, VA
matt.hamilton@colliers.com

COLLIERS INTERNATIONAL
7200 Glen Forest Drive | Suite 200
Richmond, VA 23226
www.colliers.com/richmond

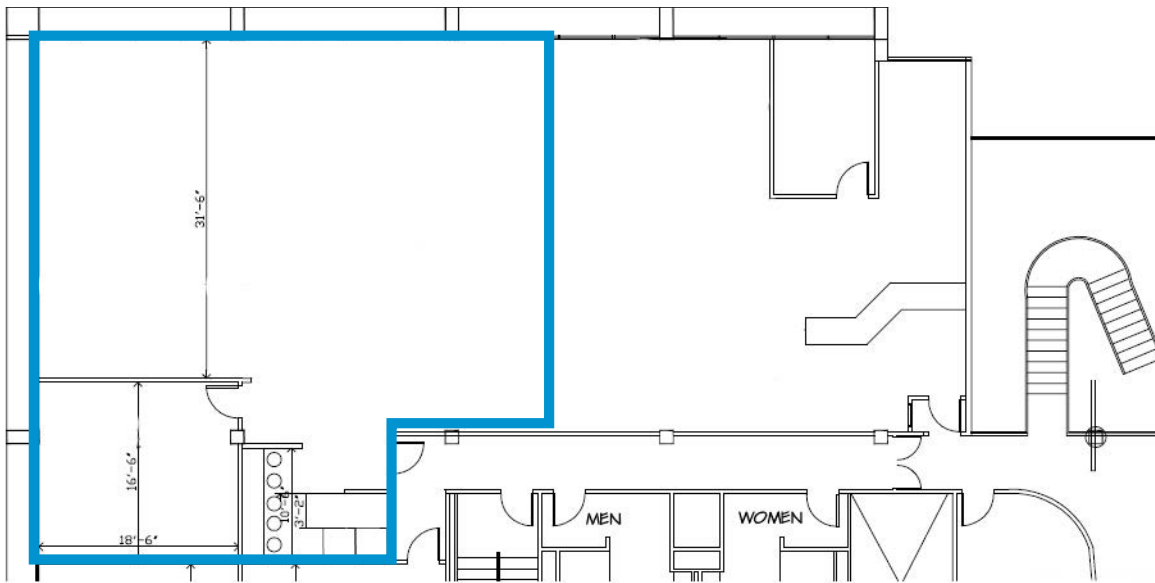
FOR LEASE > OFFICE

Commerce Plaza I

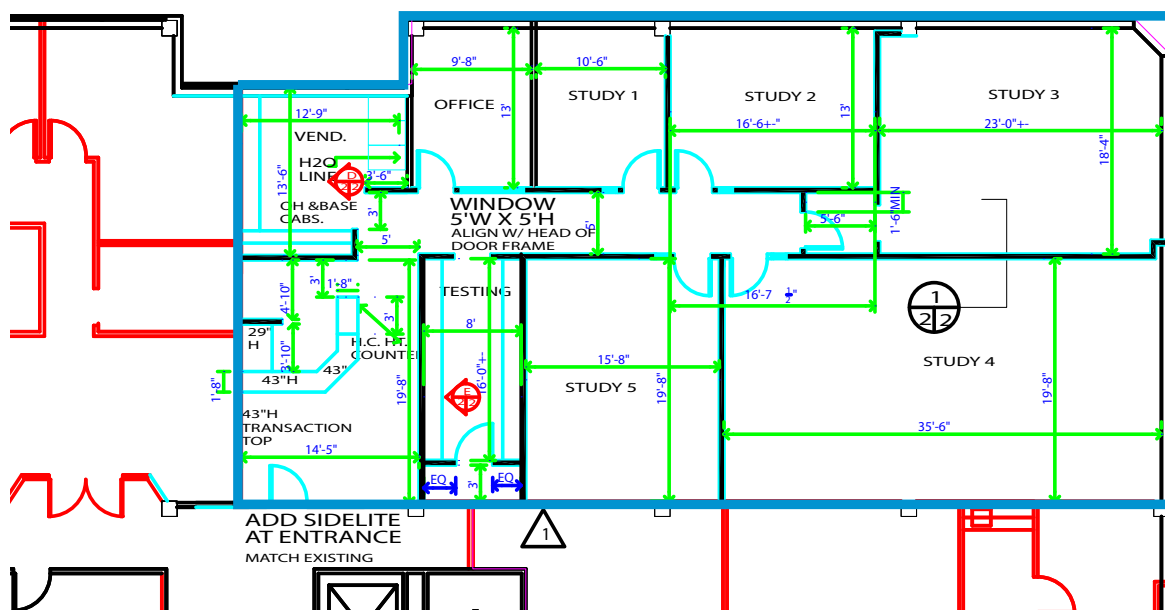
2809 EMERYWOOD PARKWAY, RICHMOND, VA 23294



Second Floor > 2,435 RSF AVAILABLE



Third Floor > ±3,253 RSF AVAILABLE



AGENT: CHRIS WALLACE
804 591 2424
RICHMOND, VA
chris.wallace@colliers.com

AGENT: MATT HAMILTON
804 591 2431
RICHMOND, VA
matt.hamilton@colliers.com

COLLIERS INTERNATIONAL
7200 Glen Forest Drive | Suite 200
Richmond, VA 23226
www.colliers.com/richmond

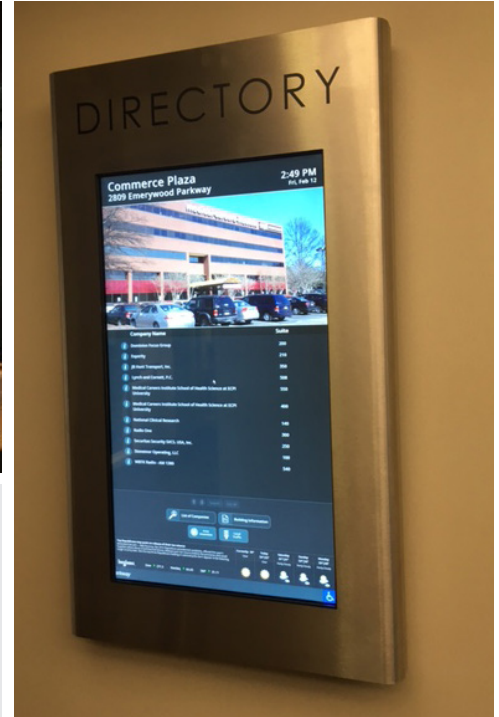
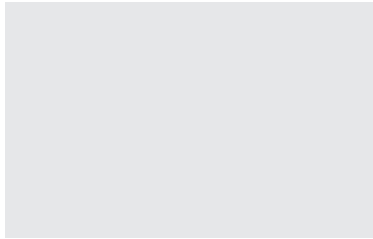
FOR LEASE > OFFICE

Commerce Plaza I

2809 EMERYWOOD PARKWAY, RICHMOND, VA 23294



Renovated lobby



The information contained herein was obtained from sources, believed reliable, however, Colliers International makes no guarantees, warranties or representations as to the completeness or accuracy thereof. The presentation of this property is submitted subject to errors, omissions, change of price or conditions prior to sale or lease, or withdrawal without notice. File Name: EmerywoodPkwy_2809_CommercePlazaI_Lease rev 1-16-18

COLLIERS INTERNATIONAL
7200 Glen Forest Drive | Suite 200
Richmond, VA 23226
www.colliers.com/richmond