

Chelsea Shopping Center - Retail

1020 S Main St, Chelsea, MI 48118



Listing ID: 30177566
Status: Active
Property Type: Shopping Center For Lease
Retail Type: Community Center
Contiguous Space: 1,150 - 6,000 SF
Total Available: 7,150 SF
Lease Rate: \$10 - 12 PSF (Annual)
Base Monthly Rent: \$1,150 - 5,000
Lease Type: Modified Gross, NNN
Loading: 3 Docks (Varies by space)
Ceiling: 14 ft.

Overview/Comments

Chelsea Shopping Center is located just south of downtown Chelsea, in the heart of the prime retail district. High traffic volume, high visibility and plenty of parking.



More Information Online

<http://www.cpix.net/listing/30177566>

QR Code

Scan this image with your mobile device:



General Information

Taxing Authority: City of Chelsea
Tax ID/APN: 06-06-13-150-002
Retail Type: Community Center
Zoning: C-4

Building Name: Chelsea Shopping Center
Gross Building Area: 97,673 SF
Building/Unit Size (RSF): 89,888 SF
Land Area: 8.79 Acres

Available Space

Suite/Unit Number: 100R
Suite Floor/Level: 1st
Space Available: 6,000 SF
Minimum Divisible: 6,000 SF
Maximum Contiguous: 6,000 SF
Space Subcategory 1: Self Storage
Space Subcategory 2: Warehouse/Distribution

Space Description: Wide open space, great for storage. Located at the rear of the shopping center. Ample parking.
Space Type: Relet
Date Available: 12/01/2017
Lease Term (Months): 60 Months
Lease Rate: \$10 PSF (Annual)
Lease Type: Modified Gross

Available Space

Suite/Unit Number:	1080	Space Type:	Relet
Suite Floor/Level:	1st	Date Available:	11/01/2017
Space Available:	1,150 SF	Lease Term (Months):	60 Months
Minimum Divisible:	1,150 SF	Lease Rate:	\$12 PSF (Annual)
Maximum Contiguous:	1,150 SF	Lease Type:	NNN
Space Description:	Space is approximately 15' x 80'. Wide open, rear employee entrance. 1 restroom.		

Area & Location

Retail Clientele:	General, Family, Business, Traveler, Tourist	Feet of Frontage:	698
Property Located Between:	SW corner of Old US-12 and M-52	Traffic/Vehicle Count:	11,800
Property Visibility:	Excellent	Highway Access:	Easy access to I-94 at the Main St off-ramp in Chelsea, Exit #159.
Largest Nearby Street:	Main St		

Building Related

Total Number of Buildings:	1	Parking Ratio:	3.7 (per 1000 SF)
Number of Stories:	1	Parking Type:	Structure
Typical SF / Floor:	93,782 SF	Total Parking Spaces:	368
Property Condition:	Excellent	Ceiling Height:	14
Year Built:	1988	Loading Docks:	3
Year Renovated:	2003	Passenger Elevators:	0
Roof Type:	Flat	Freight Elevators:	0
Construction/Siding:	Block		

Land Related

Lot Frontage:	698	Sewer Type:	Municipal
Lot Depth:	781	Easements:	Ingress/Egress, Utilities
Water Service:	Municipal		

Legal Description TRSF 6-21-95 REWRITE W.D. L3120 P478 CV 1-184A-1 COM AT CEN OF SEC 13, TH N 00-44-19 E 1112.38 FT TO POB, TH CONT N 00-44-19 E 673.85 FT, TH S 89-21-20 E 3.83 FT, TH 452.67 FT ALNG CURV RTRAD=2654.29 FT CH=S 84-28-09 E 452.12 FT, TH S 00-44-19 W 309.

Location

Address:	1020 S Main St, Chelsea, MI 48118	MSA:	Ann Arbor
County:	Washtenaw	Submarket:	Washtenaw W of 23



Property Images



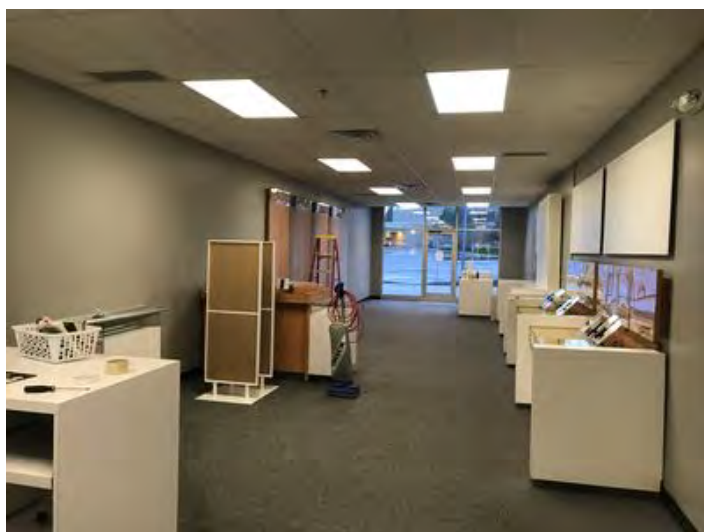
Signage on S Main St



Interior of retail space - 1080 S Main



Chelsea Shopping Center



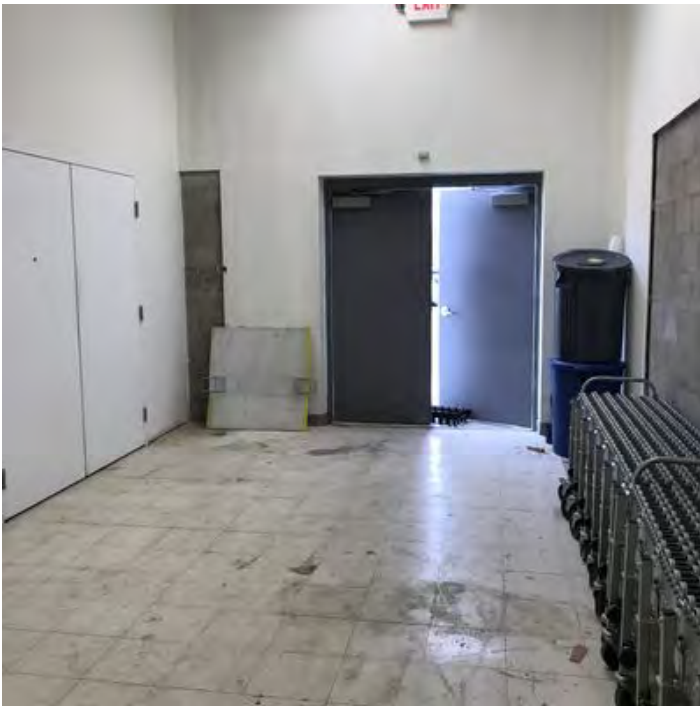
Interior of retail space - 1080 S Main



Chelsea Shopping Center



100R - Entrance



100R - rear hallway



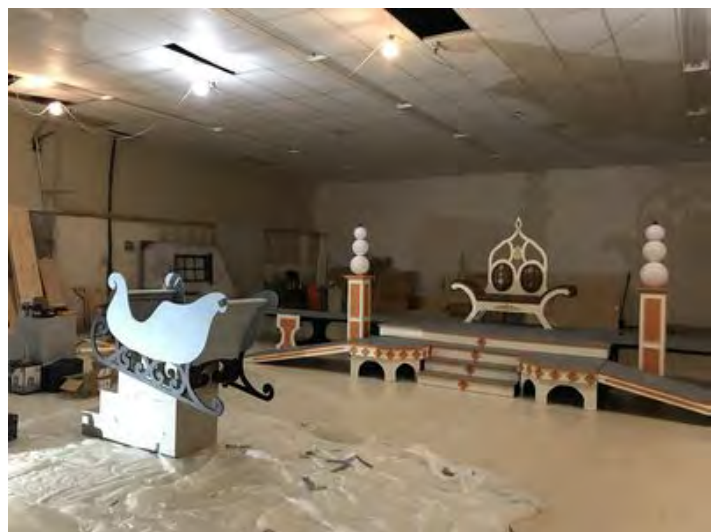
100R - interior



100R - interior



100R - rear entryway to space



100R - interior



100R - interior

Property Contacts



James H. Chaconas

Colliers International
734-769-5005 [0]
jim.chaconas@colliers.com