

Chelsea Shopping Center - Retail

1020 S Main St, Chelsea, MI 48118



Listing ID: 30177566
Status: Active
Property Type: Shopping Center For Lease
Retail Type: Community Center
Contiguous Space: 6,000 SF
Total Available: 6,000 SF
Lease Rate: \$10 PSF (Annual)
Base Monthly Rent: \$5,000
Lease Type: Modified Gross
Loading: 3 Docks
Ceiling: 14 ft.



Overview/Comments

Chelsea Shopping Center is located just south of downtown Chelsea, in the heart of the prime retail district. High traffic volume, high visibility and plenty of parking.

More Information Online

<http://www.cpix.net/listing/30177566>

QR Code

Scan this image with your mobile device:



General Information

Taxing Authority:	City of Chelsea	Building Name:	Chelsea Shopping Center
Tax ID/APN:	06-06-13-150-002	Gross Building Area:	97,673 SF
Retail Type:	Community Center	Building/Unit Size (RSF):	89,888 SF
Zoning:	C-4	Land Area:	8.79 Acres

Available Space

Suite/Unit Number:	100R	Space Description:	Wide open space, great for storage. Located at the rear of the shopping center. Ample parking.
Suite Floor/Level:	1st	Space Type:	Relet
Space Available:	6,000 SF	Date Available:	12/01/2017
Minimum Divisible:	6,000 SF	Lease Term (Months):	60 Months
Maximum Contiguous:	6,000 SF	Lease Rate:	\$10 PSF (Annual)
Space Subcategory 1:	Self Storage	Lease Type:	Modified Gross
Space Subcategory 2:	Warehouse/Distribution		

Area & Location

Retail Clientele:	General, Family, Business, Traveler, Tourist	Feet of Frontage:	698
Property Located Between:	SW corner of Old US-12 and M-52	Traffic/Vehicle Count:	11,800
Property Visibility:	Excellent	Highway Access:	Easy access to I-94 at the Main St off-ramp in Chelsea, Exit #159.
Largest Nearby Street:	Main St		

Building Related

Total Number of Buildings:	1	Year Renovated:	2003
Number of Stories:	1	Roof Type:	Flat
Typical SF / Floor:	93,782 SF	Construction/Siding:	Block
Property Condition:	Excellent	Parking Ratio:	3.7 (per 1000 SF)
Year Built:	1988	Parking Type:	Structure

Total Parking Spaces: 368
Ceiling Height: 14
Loading Docks: 3

Passenger Elevators: 0
Freight Elevators: 0

Land Related

Lot Frontage: 698
Lot Depth: 781
Water Service: Municipal

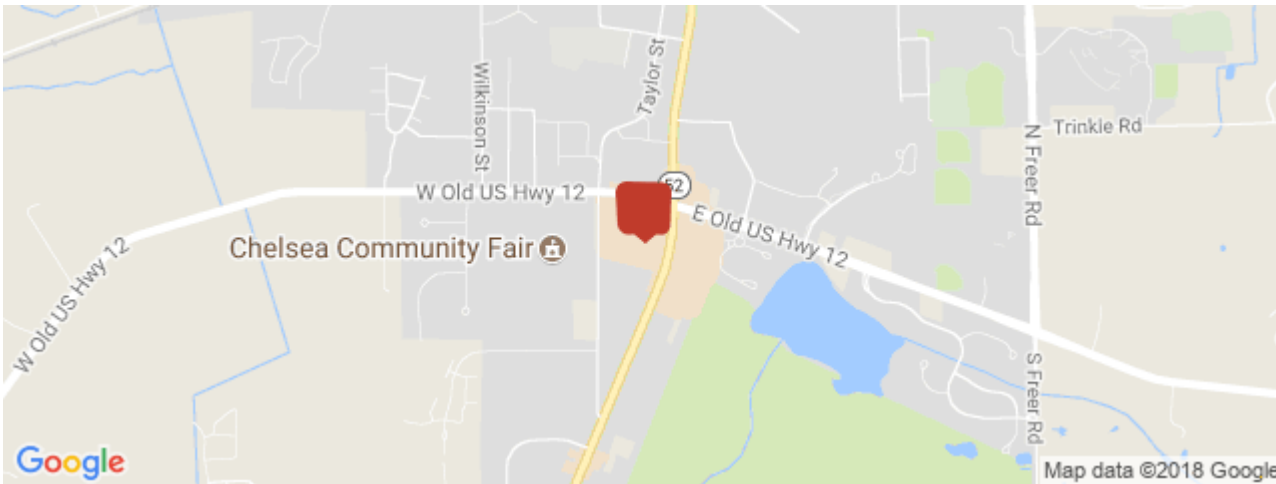
Sewer Type: Municipal
Easements: Ingress/Egress, Utilities

Legal Description TRSF 6-21-95 REWRITE W.D. L3120 P478 CV 1-184A-1 COM AT CEN OF SEC 13, TH N 00-44-19 E 1112.38 FT TO POB, TH CONT N 00-44-19 E 673.85 FT, TH S 89-21-20 E 3.83 FT, TH 452.67 FT ALNG CURV RTRAD=2654.29 FT CH=S 84-28-09 E 452.12 FT, TH S 00-44-19 W 309.

Location

Address: 1020 S Main St, Chelsea, MI 48118
County: Washtenaw

MSA: Ann Arbor
Submarket: Washtenaw W of 23



Property Images



Chelsea Shopping Center



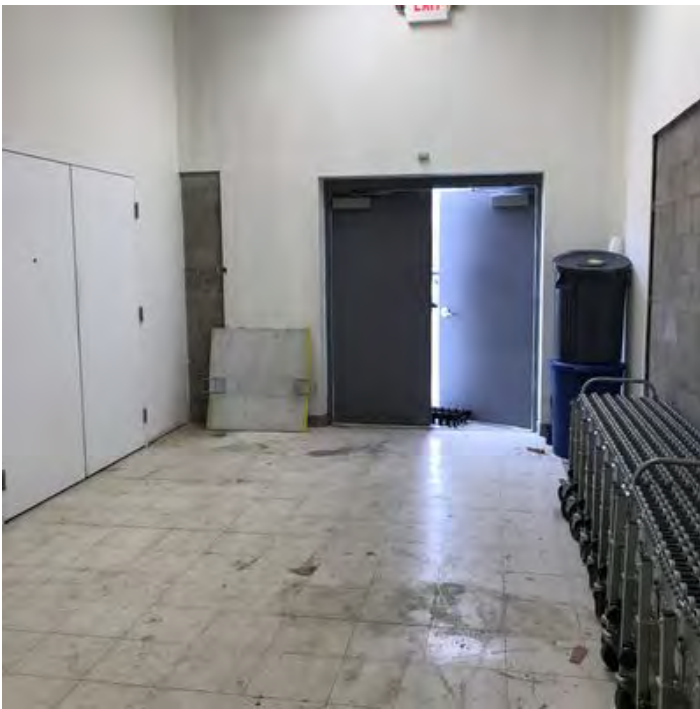
Chelsea Shopping Center



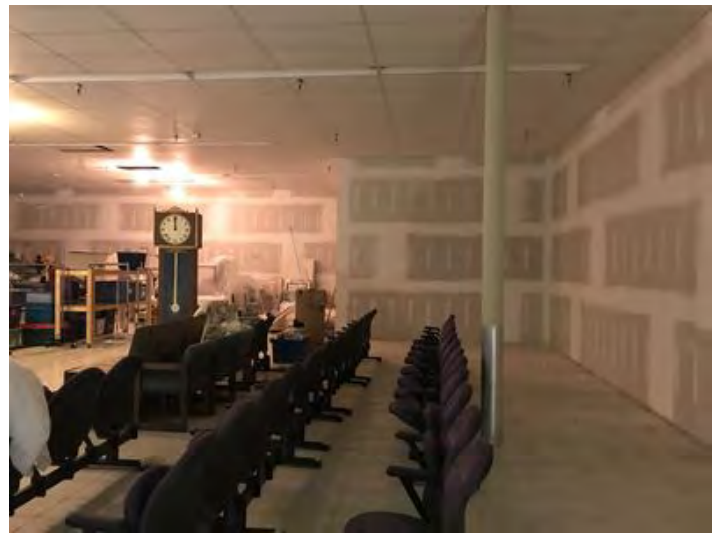
100R - Entrance



100R - rear entryway to space



100R - rear hallway



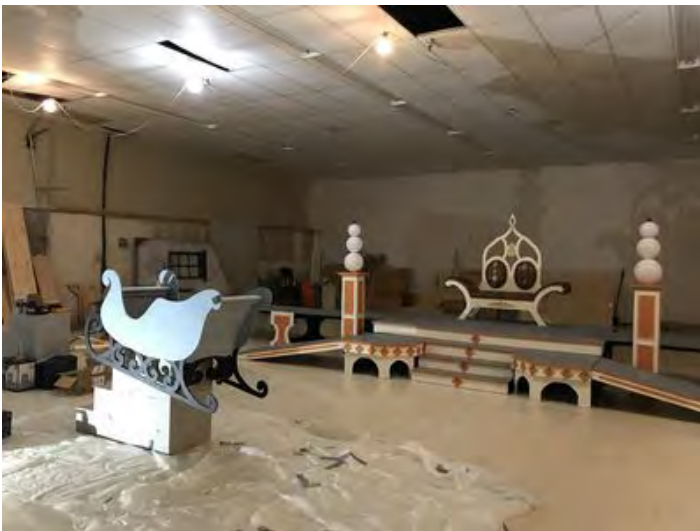
100R - interior



100R - interior



100R - interior



100R - interior

Property Contacts



James H. Chaconas

Colliers International
734-994-3100 [0]
jim.chaconas@colliers.com