

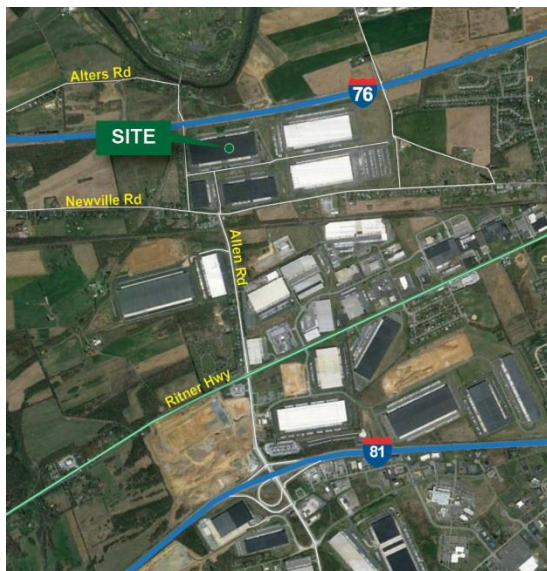
# 806,474 SF

## Industrial Space For Lease



## Prologis Carlisle

1501 Distribution Drive  
Carlisle, PA 17013 USA



### LOCATION

- Premier Central Pennsylvania location
- Located 1.3 miles from Exit #44 off I-81
- Over 50% of US and 60% of Canadian consumers are within a one day truck drive
- Located within an FTZ

### FACILITY

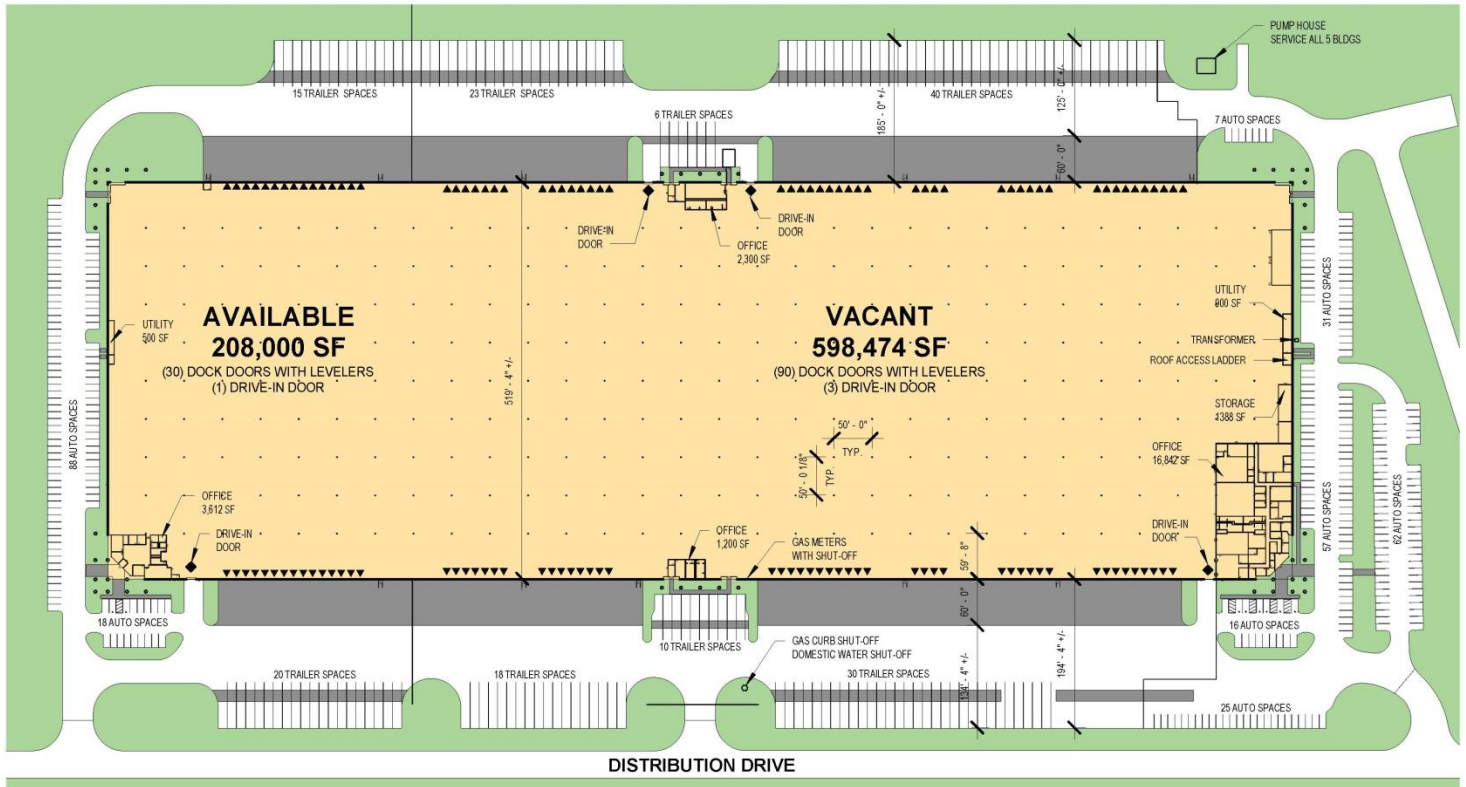
- 806,474 SF of total available space
- 598,474 SF of available space for immediate occupancy
- 16,842 SF & 3,612 SF of office space
- 120 (9' x 10') dock doors with levelers
- 31' ceiling clear at the first column line, rising to 34'6" ceiling clear
- 50' x 50' column spacing (60' x 50' in staging area)
- 162 trailer spaces & 304 employee parking spaces
- ESFR sprinkler system (K-14 heads)
- 7,000 AMP, 480-volt main electrical service

### ADVANTAGES AND AMENITIES

- Ideally located in the industrial logistics hub of Eastern PA
- Immediate access to interstates, major cities, airports, and ports

# 806,474 SF

## Industrial Space For Lease



NOTE: THIS CONCEPTUAL PLAN IS FOR MARKETING PURPOSES ONLY AND HAS BEEN PREPARED BASED ON PRELIMINARY AVAILABLE SITE INFORMATION DEEMED RELIABLE. ALL DIMENSION AREA CALCULATIONS ARE SUBJECT TO VERIFICATION BY A PROFESSIONAL ENGINEER FOR COMPLIANCE WITH ALL FEDERAL, STATE, AND LOCAL REGULATIONS.



#### LEGEND

- ▲ DOCK POSITION W/ LEVELER
- ◆ DRIVE-IN DOOR
- LAND
- AVAILABLE AREA
- LEASED AREA



#### Colliers International

**Mark Chubb**

Mark.chubb@colliers.com  
ph +1 610 684 1862  
cell +1 302 275 5043  
161 Washington Street  
Suite 1090  
Conshohocken, PA 19428  
USA

#### Colliers International

**Michael Zerbe**

michael.zerbe@colliers.com  
ph +1 610 684 1853  
cell +1 610 462 3956  
161 Washington Street  
Suite 1090  
Conshohocken, PA 19428  
USA

#### Prologis

**Meg Buffington**

mbuffington@prologis.com  
ph +1 717 790 5102  
cell +1 717 919 3478  
4900 Ritter Road  
Suite 150  
Mechanicsburg, PA 17055  
USA