

±26.54 ACRES FOR SALE > VACANT LAND > SPARTANBURG



# Highway 29 Land

(HIGHWAY 29) @ WILLIS ROAD, SPARTANBURG, SC 29301



## Property Highlights

- > Tract A: 11.33 acres
- > Tract B: 15.21 acres
- > ±1,233' of frontage on Highway 29
- > ±2.4 miles to WestGate Mall
- > Tax Map # 6-19-00-019.03
- > Excellent exposure
- > Zoning: None
- > Utilities: All (sewer is 1,500' from site)

> **Price: \$85,000/ acre**

## Demographics (2015)

	1-MILE	3-MILE	5-MILE
POPULATION	3,710	27,893	74,917
AVERAGE HH INCOME	\$83,833	\$66,705	\$57,016

## Traffic Count (2015)



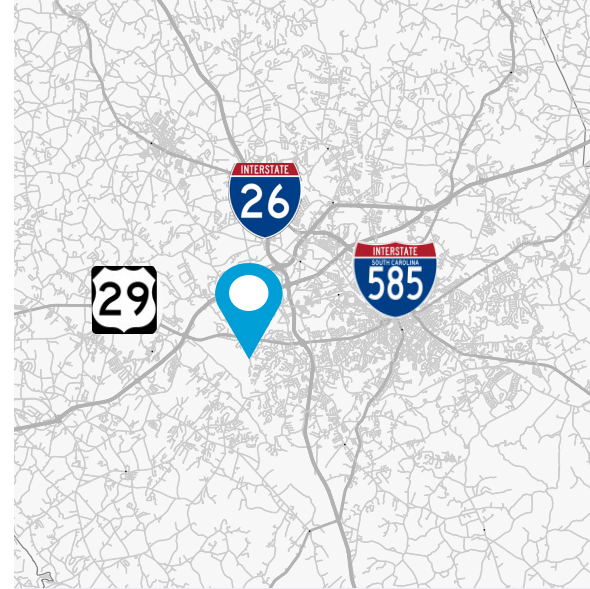
34,900 VPD - Highway 29

FRANK HAMMOND, CCIM  
DIR 864 527 5451  
MAIN 864 297 4950  
frank.hammond@colliers.com

COLLIERS INTERNATIONAL  
55 E Camperdown Way  
Greenville, SC 29601  
www.colliers.com/southcarolina

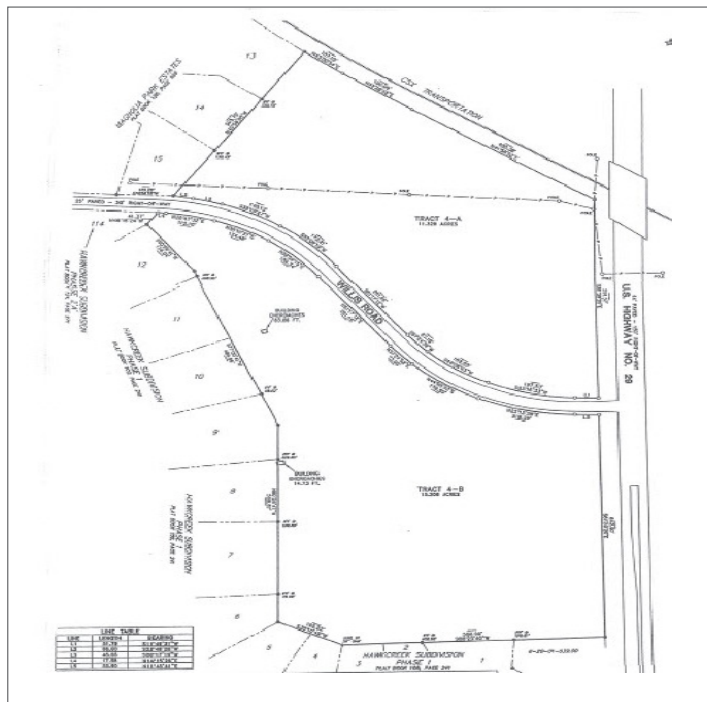


## Highway 29 at Willis Road &gt; Aerial



## Contact Us

FRANK HAMMOND, CCIM  
DIR 864 527 5451  
MAIN 864 297 4950  
[frank.hammond@colliers.com](mailto:frank.hammond@colliers.com)



COLLIERS INTERNATIONAL  
55 E Camperdown Way  
Greenville, SC 29601  
[www.colliers.com/southcarolina](http://www.colliers.com/southcarolina)

This document has been prepared by Colliers International for advertising and general information only. Colliers International makes no guarantees, representations or warranties of any kind, expressed or implied, regarding the information including, but not limited to, warranties of content, accuracy and reliability. Any interested party should undertake their own inquiries as to the accuracy of the information. Colliers International excludes unequivocally all inferred or implied terms, conditions and warranties arising out of this document and excludes all liability for loss and damages arising there from. This publication is the copyrighted property of Colliers International and/or its licensor(s). ©2016. All rights reserved.

